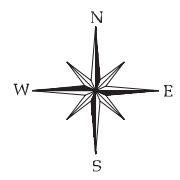
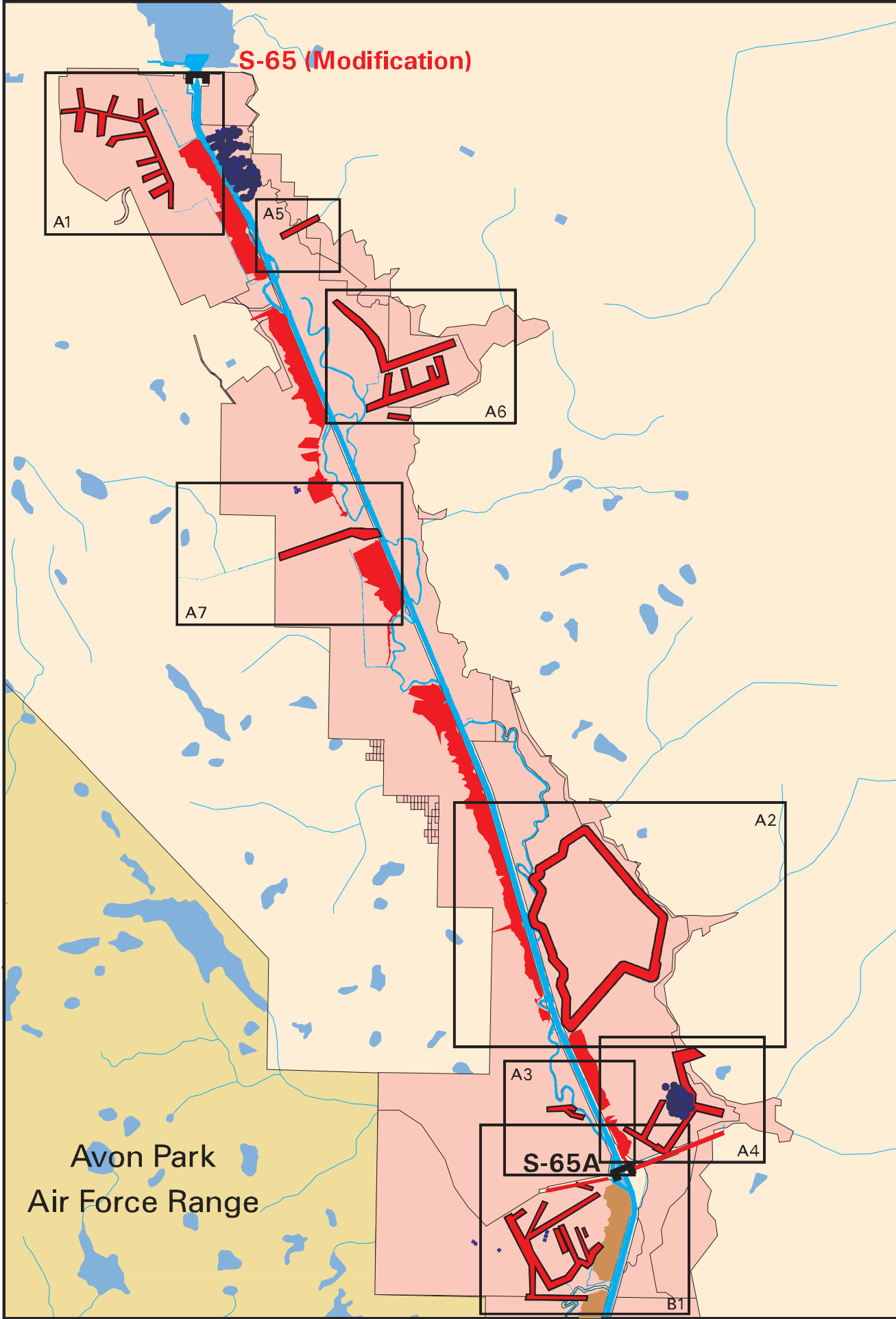
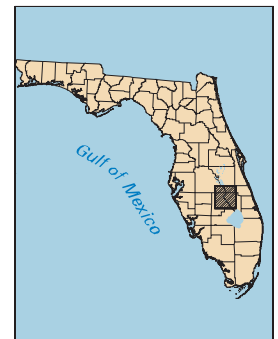


# Herpetofauna Sample Sites Relative to 1998-99 Kissimmee River Restoration Lower Basin Construction Features

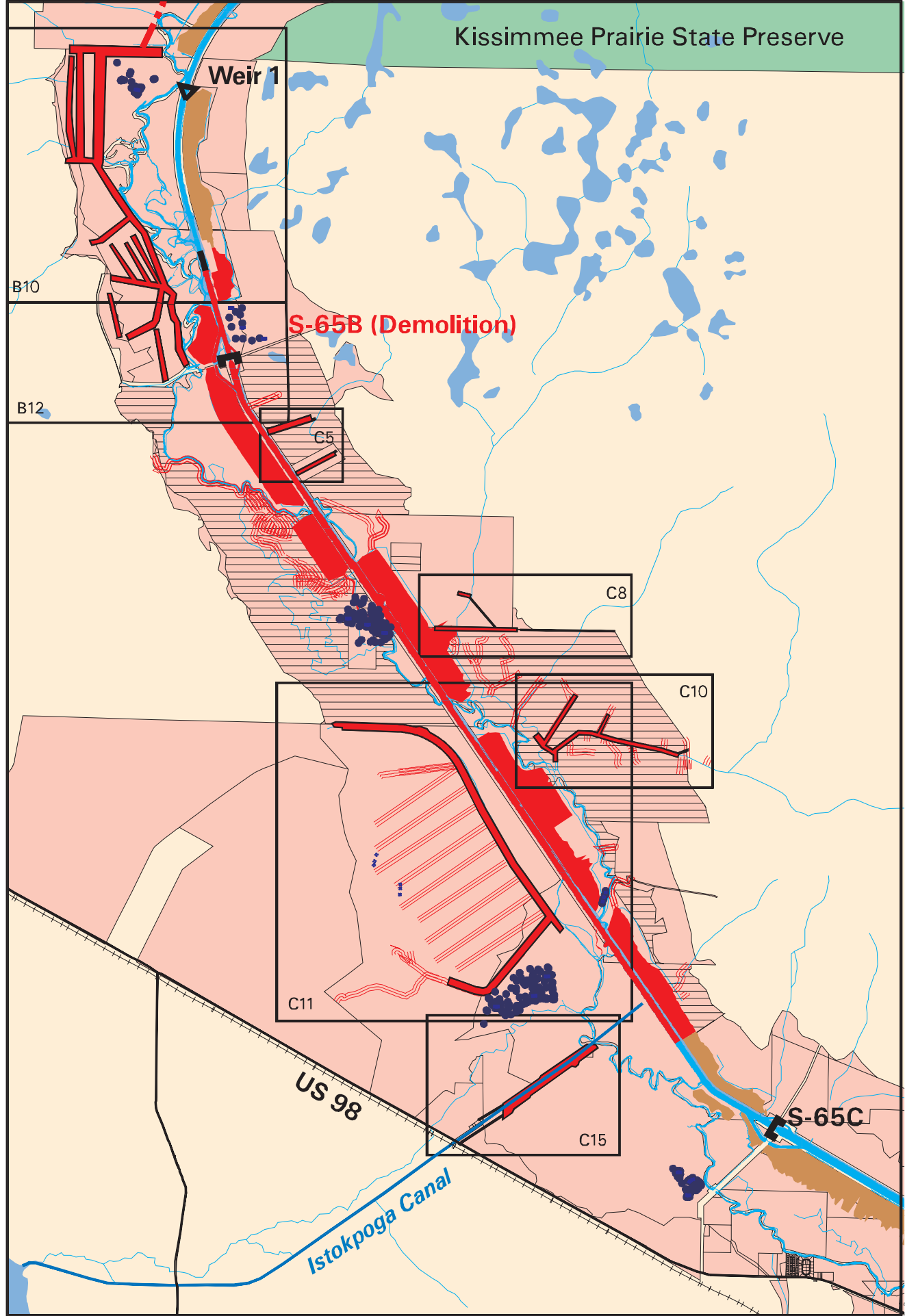
- LEGEND**
- Project Lands
  - Project Lands Requiring SFWMD Fence Construction
  - Spoil Mounds
  - Spoil Mounds To Be Removed
  - Test Fill
  - Hydrography
  - US Army COE Local Levee & Farm Ditch Degradation Work Area
  - Avon Park Fence
  - US Army COE Local Levee & Farm Ditch Degradation Work Limits
  - SFWMD Minor Local Levee & Farm Ditch Degradation Work Limits
  - Railroad
  - Herpetofauna Sample Sites



Compiled by Bonnie Rose (SFWMD), Christine Carlson (SFWMD) and Jimmy Mathews (USACOE-JAX). General hydrography, structures, and project lands are from SFWMD pcovs. Detailed hydrography, SFWMD levee work, test fill, primary construction features, and sample sites are from the KRRP database. /proj/krrp1/brwork/maps/sampcons.gra 03/10/1998






**Pool A**

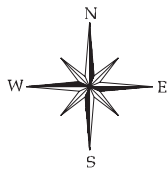


**Pool C**

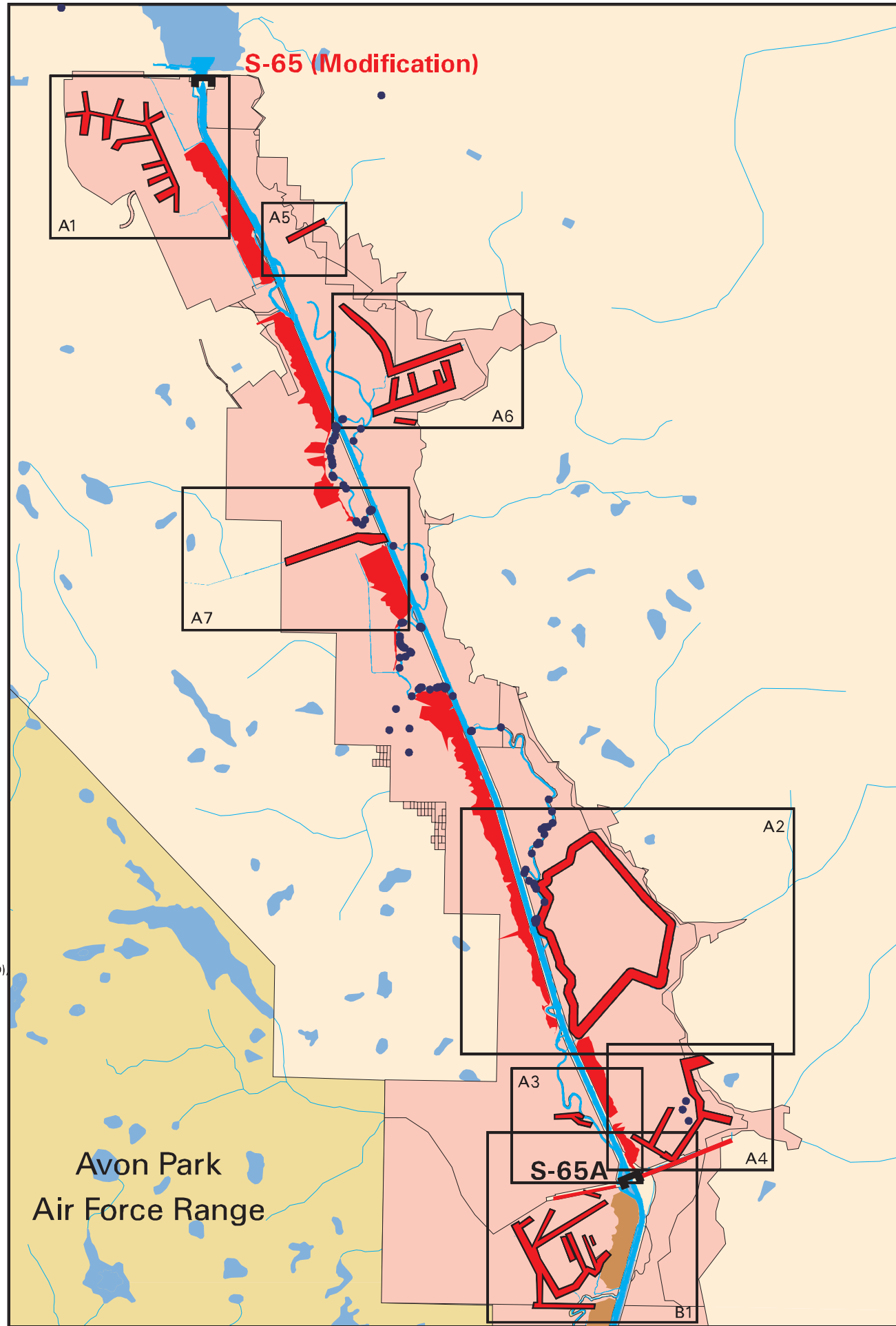
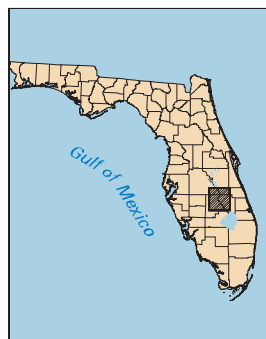
# Bird Sample Sites Relative to 1998-99 Kissimmee River Restoration Lower Basin Construction Features

## LEGEND

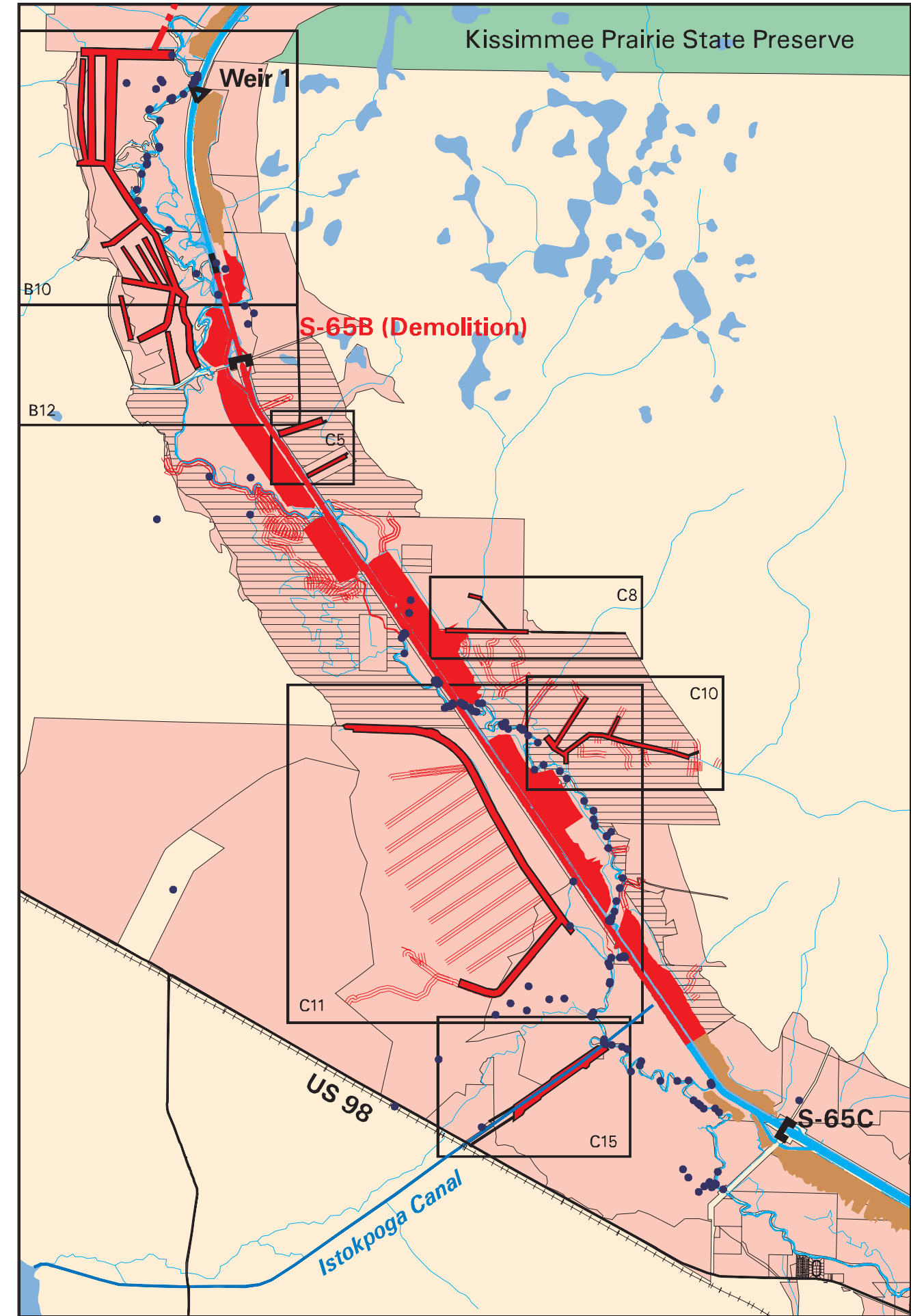
-  Project Lands
-  Project Lands Requiring SFWMD Fence Construction
-  Spoil Mounds
-  Spoil Mounds To Be Removed
-  Test Fill
-  Hydrography
-  US Army COE Local Levee & Farm Ditch Degradation Work Area
-  Avon Park Fence
-  US Army COE Local Levee & Farm Ditch Degradation Work Limits
-  SFWMD Minor Local Levee & Farm Ditch Degradation Work Limits
-  Railroad
-  Bird Sample Sites



Compiled by Bonnie Rose (SFWMD), Christine Carlson (SFWMD) and Jimmy Mathews (USACOE-JAX). General hydrography, structures, and project lands are from SFWMD pcovs. Detailed hydrography, SFWMD levee work, test fill, primary construction features, and sample sites are from the KRRP database. /proj/krrp1/brwork/maps/sampcons.gra 03/10/1998



**Pool A**






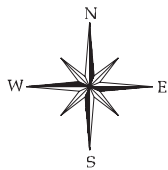
**Pool C**



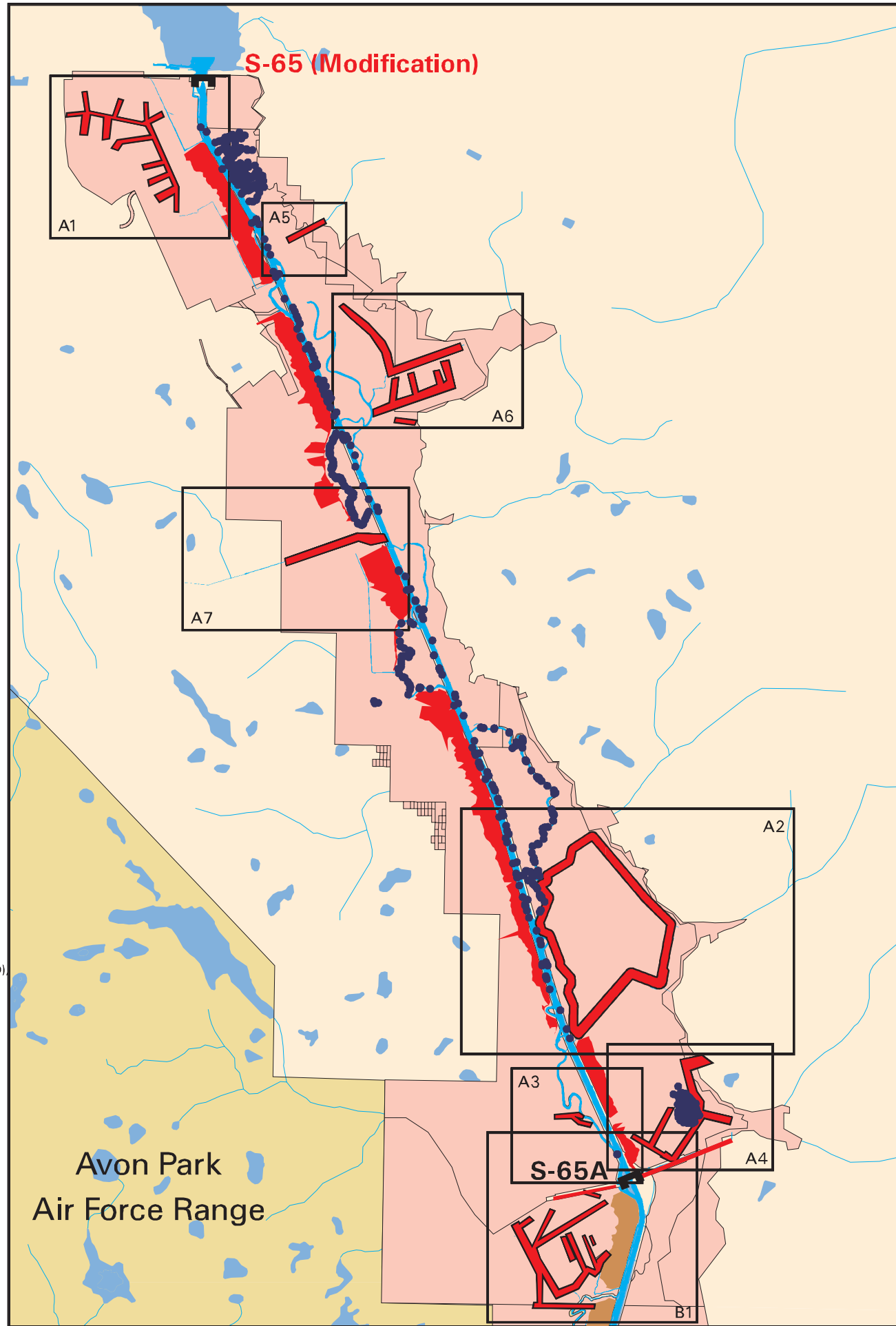
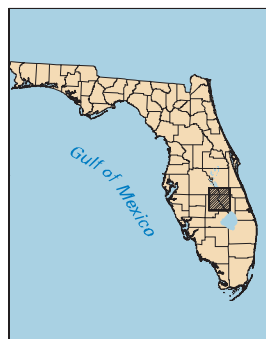
# Fish Sample Sites Relative to 1998-99 Kissimmee River Restoration Lower Basin Construction Features

## LEGEND

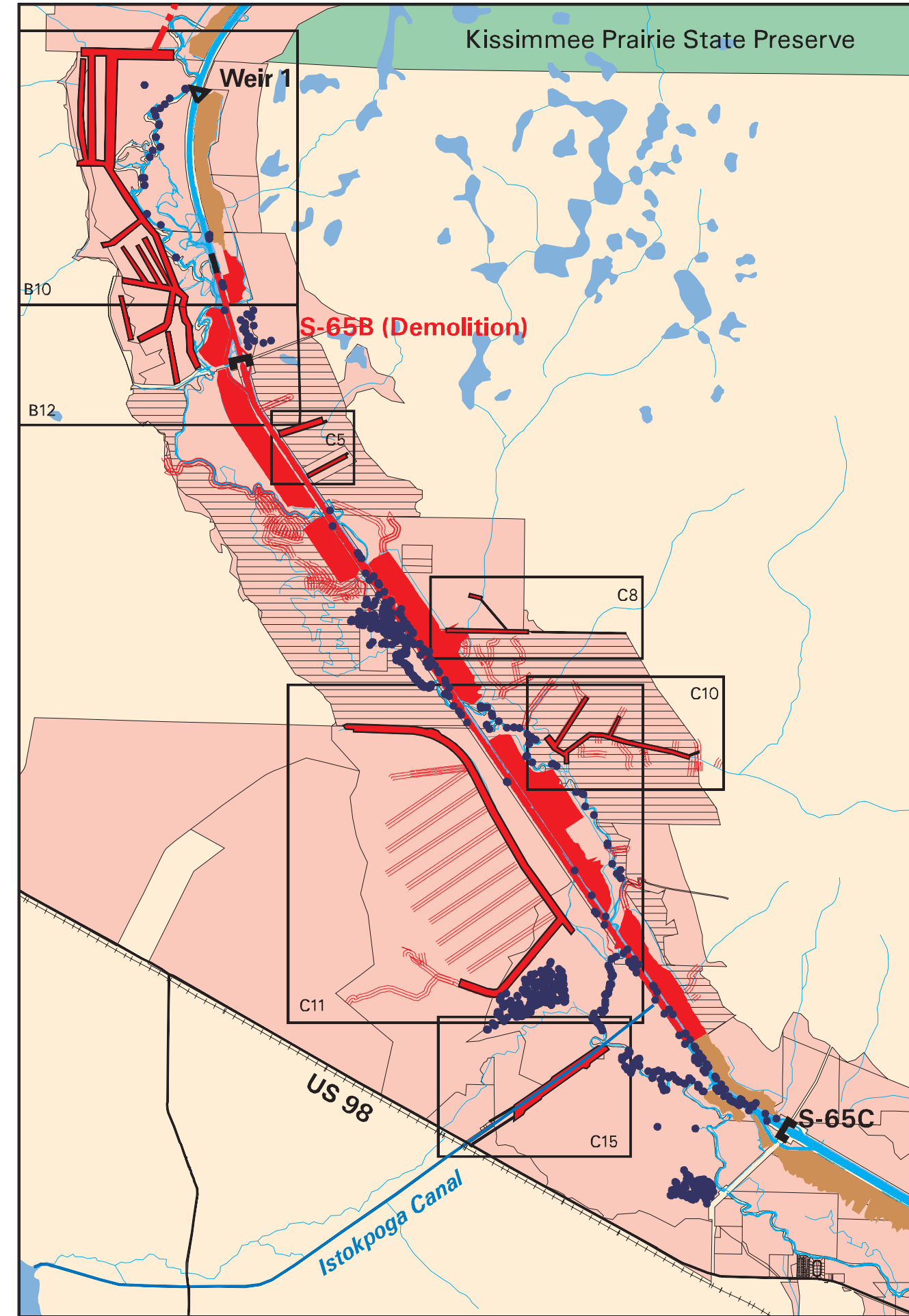
-  Project Lands
-  Project Lands Requiring SFWMD Fence Construction
-  Spoil Mounds
-  Spoil Mounds To Be Removed
-  Test Fill
-  Hydrography
-  US Army COE Local Levee & Farm Ditch Degradation Work Area
-  Avon Park Fence
-  US Army COE Local Levee & Farm Ditch Degradation Work Limits
-  SFWMD Minor Local Levee & Farm Ditch Degradation Work Limits
-  Railroad
-  Fish Sample Sites



Compiled by Bonnie Rose (SFWMD), Christine Carlson (SFWMD) and Jimmy Mathews (USACOE-JAX). General hydrography, structures, and project lands are from SFWMD pcovs. Detailed hydrography, SFWMD levee work, test fill, primary construction features, and sample sites are from the KRRP database. /proj/krrp1/brwork/maps/sampcons.gra 03/10/1998



**Pool A**



**Pool C**

Avon Park  
Air Force Range


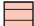










Kissimmee Prairie State Preserve

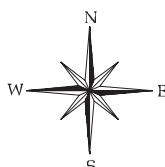
US 98

Istokpoga Canal

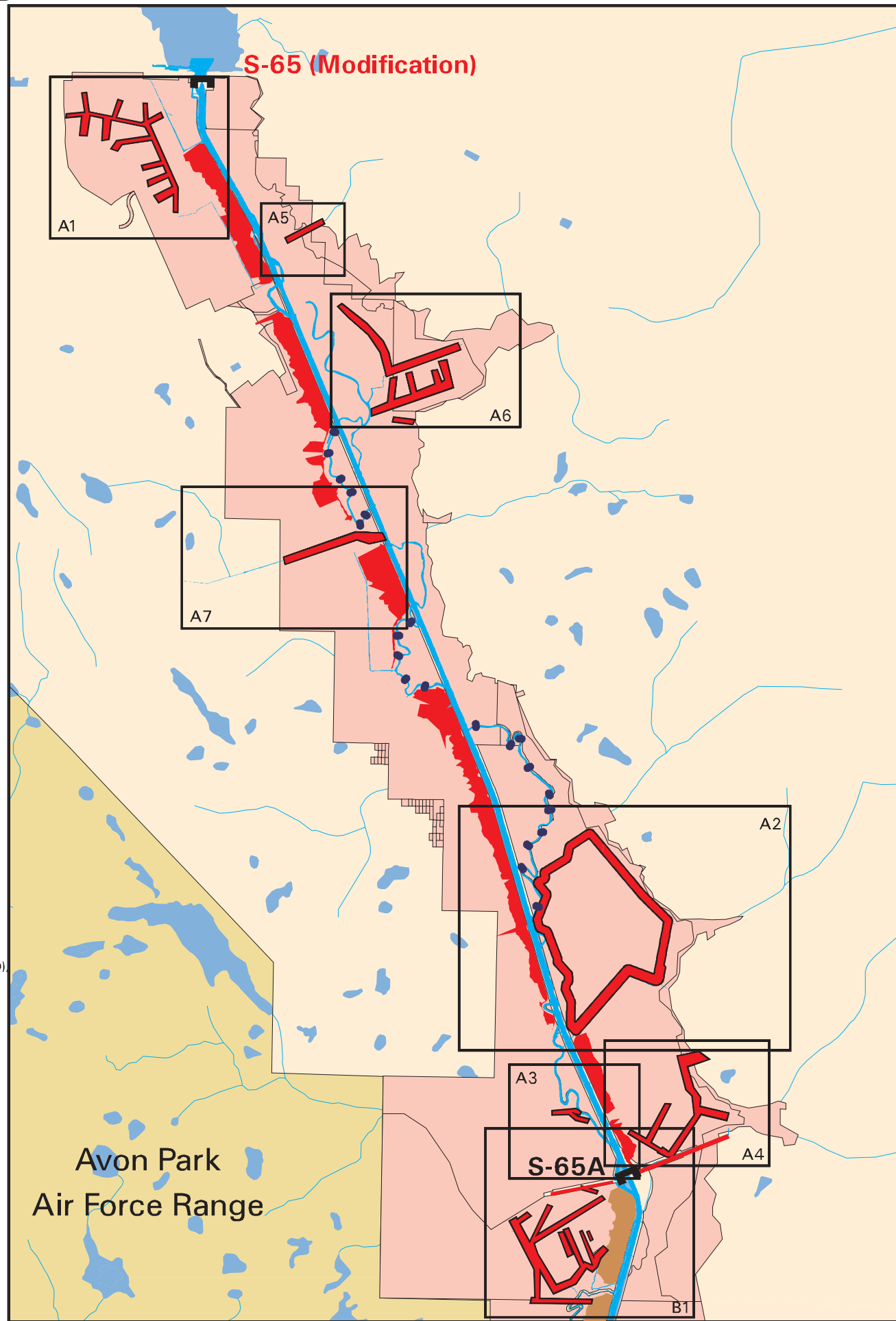
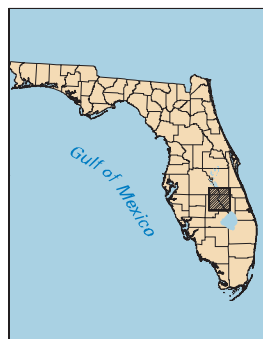
# Hydrogeomorphology Sample Sites Relative to 1998-99 Kissimmee River Restoration Lower Basin Construction Features

## LEGEND

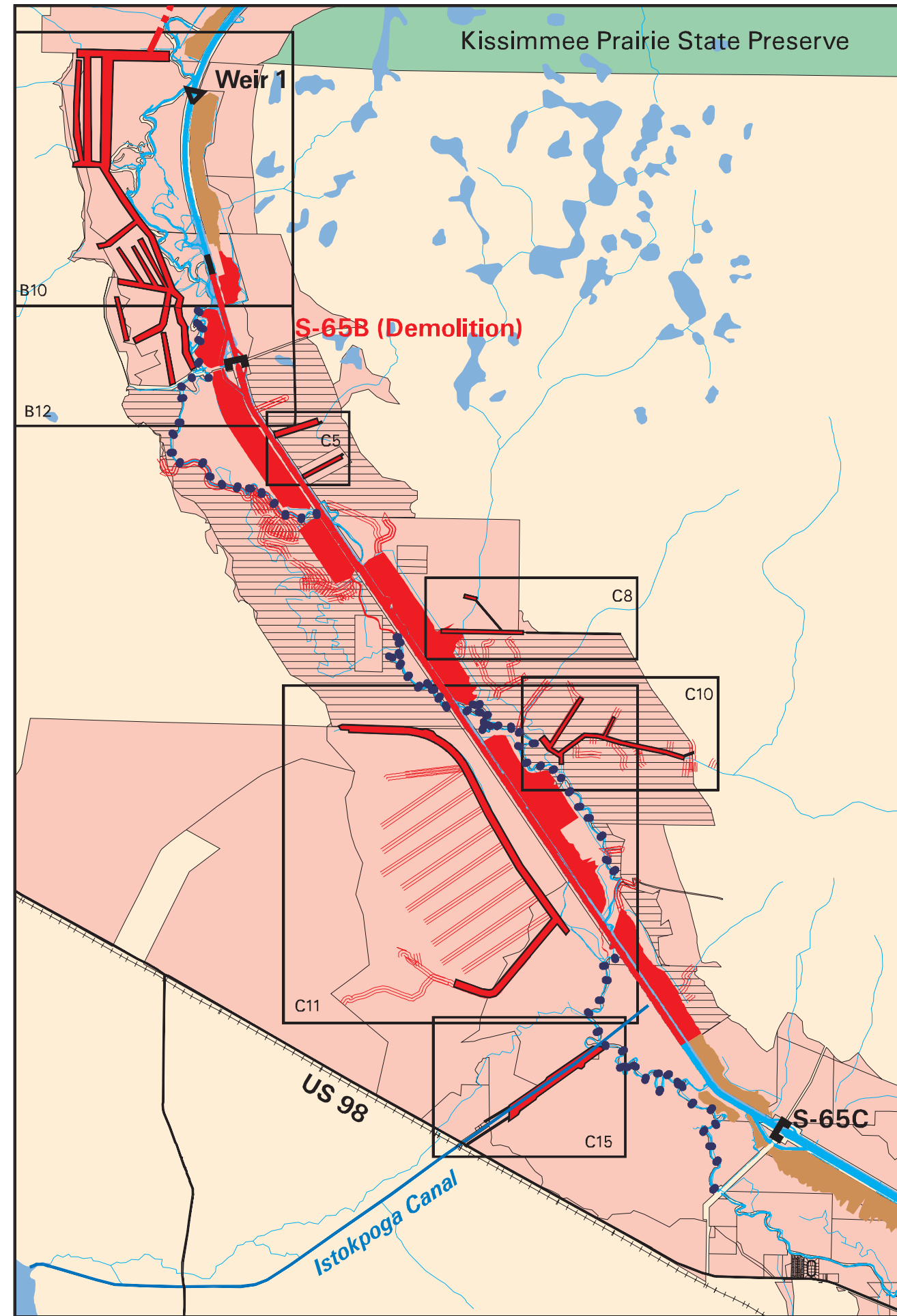
-  Project Lands
-  Project Lands Requiring SFWMD Fence Construction
-  Spoil Mounds
-  Spoil Mounds To Be Removed
-  Test Fill
-  Hydrography
-  US Army COE Local Levee & Farm Ditch Degradation Work Area
-  Avon Park Fence
-  US Army COE Local Levee & Farm Ditch Degradation Work Limits
-  SFWMD Minor Local Levee & Farm Ditch Degradation Work Limits
-  Railroad
-  Hydrogeomorphology Sample Sites



Compiled by Bonnie Rose (SFWMD), Christine Carlson (SFWMD) and Jimmy Mathews (USACOE-JAX). General hydrography, structures, and project lands are from SFWMD pcovs. Detailed hydrography, SFWMD levee work, test fill, primary construction features, and sample sites are from the KRRP database. /proj/krrp1/brwork/maps/sampcons.gra 03/10/1998



**Pool A**



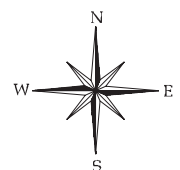
**Pool C**



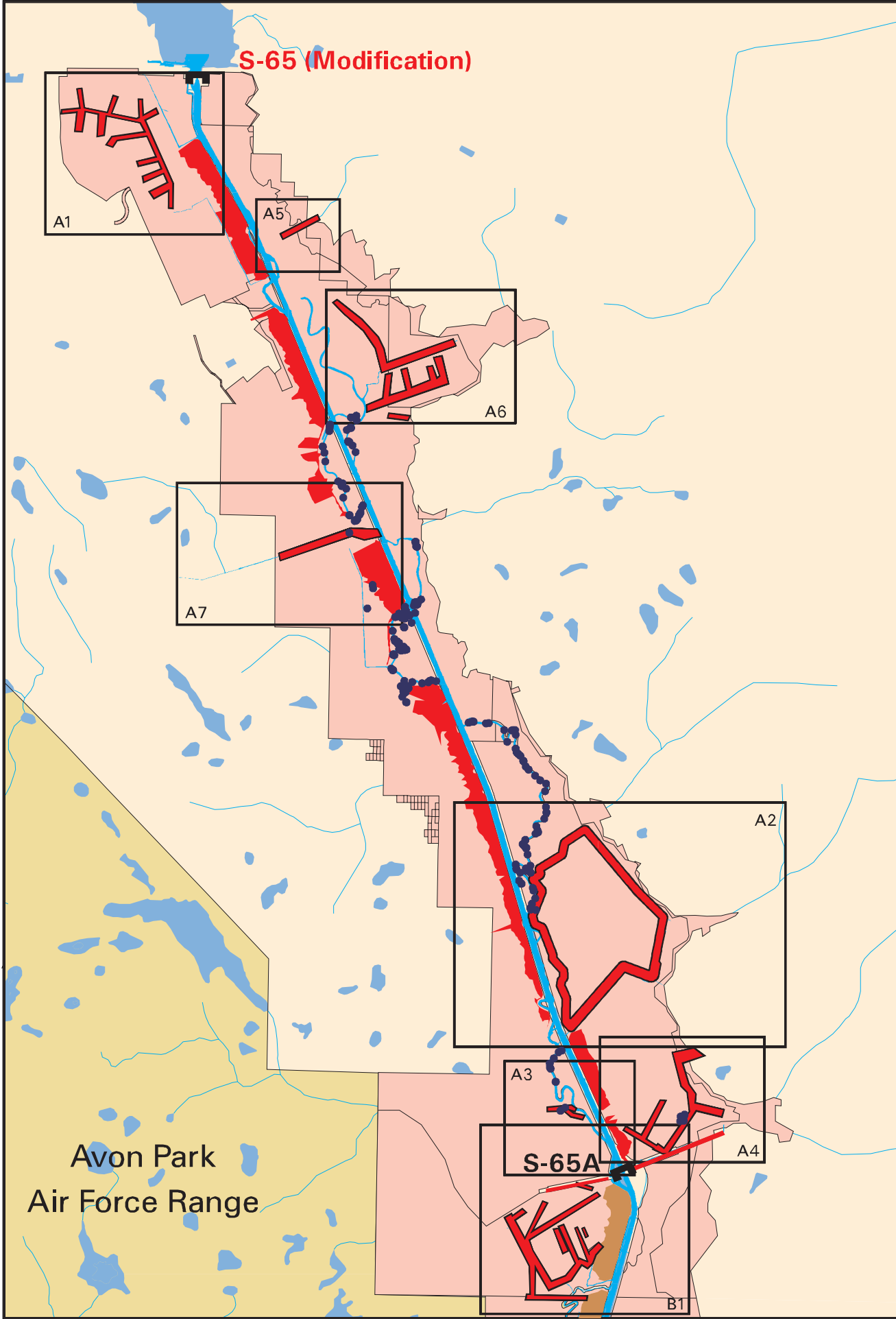
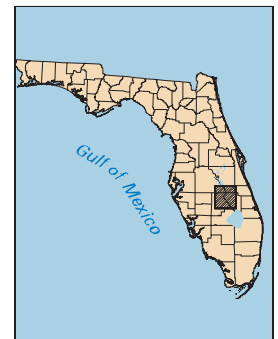
# Invertebrate Sample Sites Relative to 1998-99 Kissimmee River Restoration Lower Basin Construction Features

## LEGEND

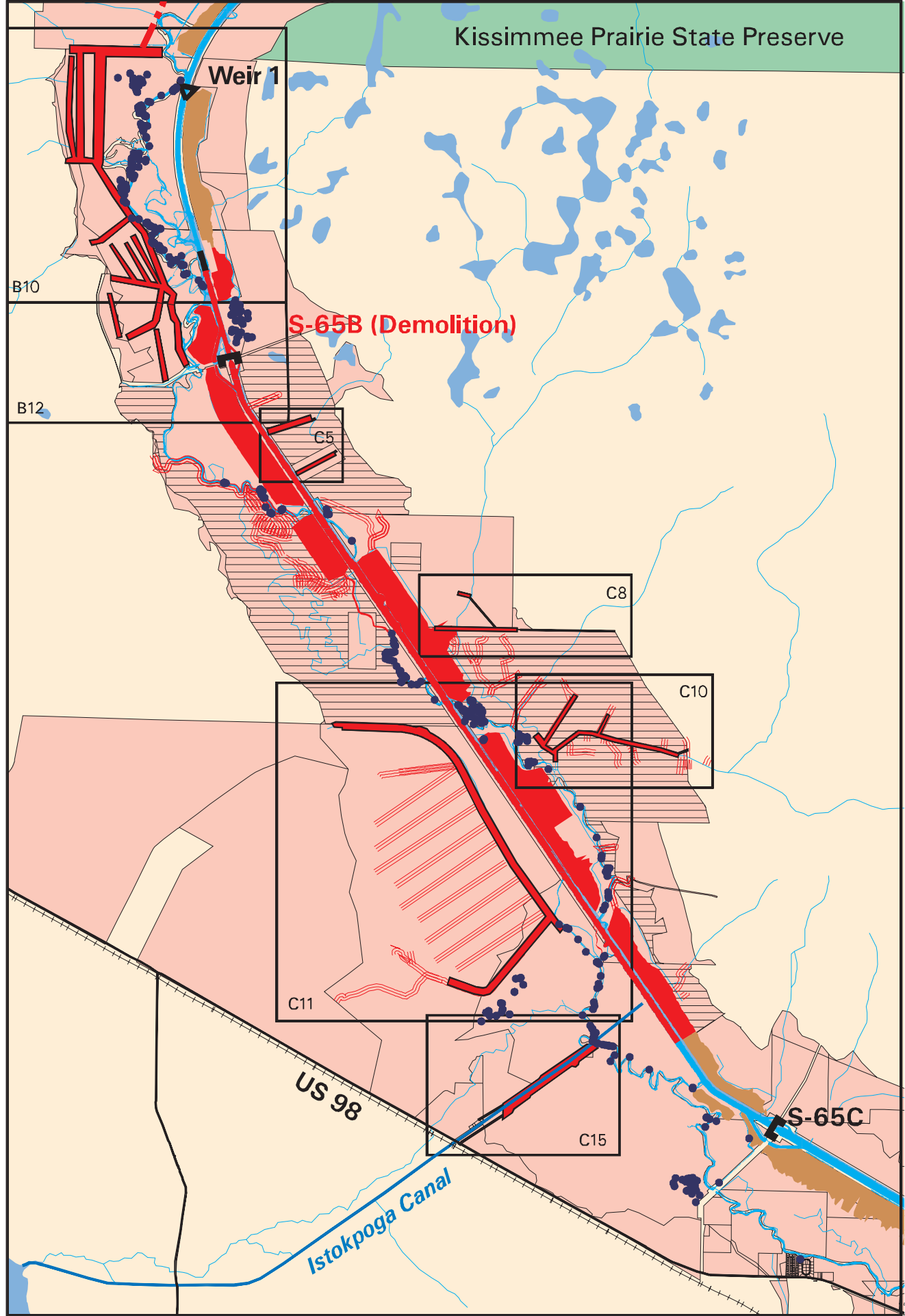
- Project Lands
- Project Lands Requiring SFWMD Fence Construction
- Spoil Mounds
- Spoil Mounds To Be Removed
- Test Fill
- Hydrography
- US Army COE Local Levee & Farm Ditch Degradation Work Area
- Avon Park Fence
- US Army COE Local Levee & Farm Ditch Degradation Work Limits
- SFWMD Minor Local Levee & Farm Ditch Degradation Work Limits
- Railroad
- Invertebrate Sample Sites



Compiled by Bonnie Rose (SFWMD), Christine Carlson (SFWMD) and Jimmy Mathews (USACOE-JAX). General hydrography, structures, and project lands are from SFWMD pcovs. Detailed hydrography, SFWMD levee work, test fill, primary construction features, and sample sites are from the KRRP database. /proj/krrp1/brwork/maps/sampcons.gra 03/10/1998





**Pool A**

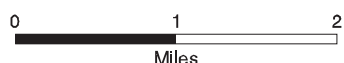
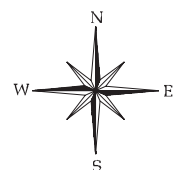


**Pool C**

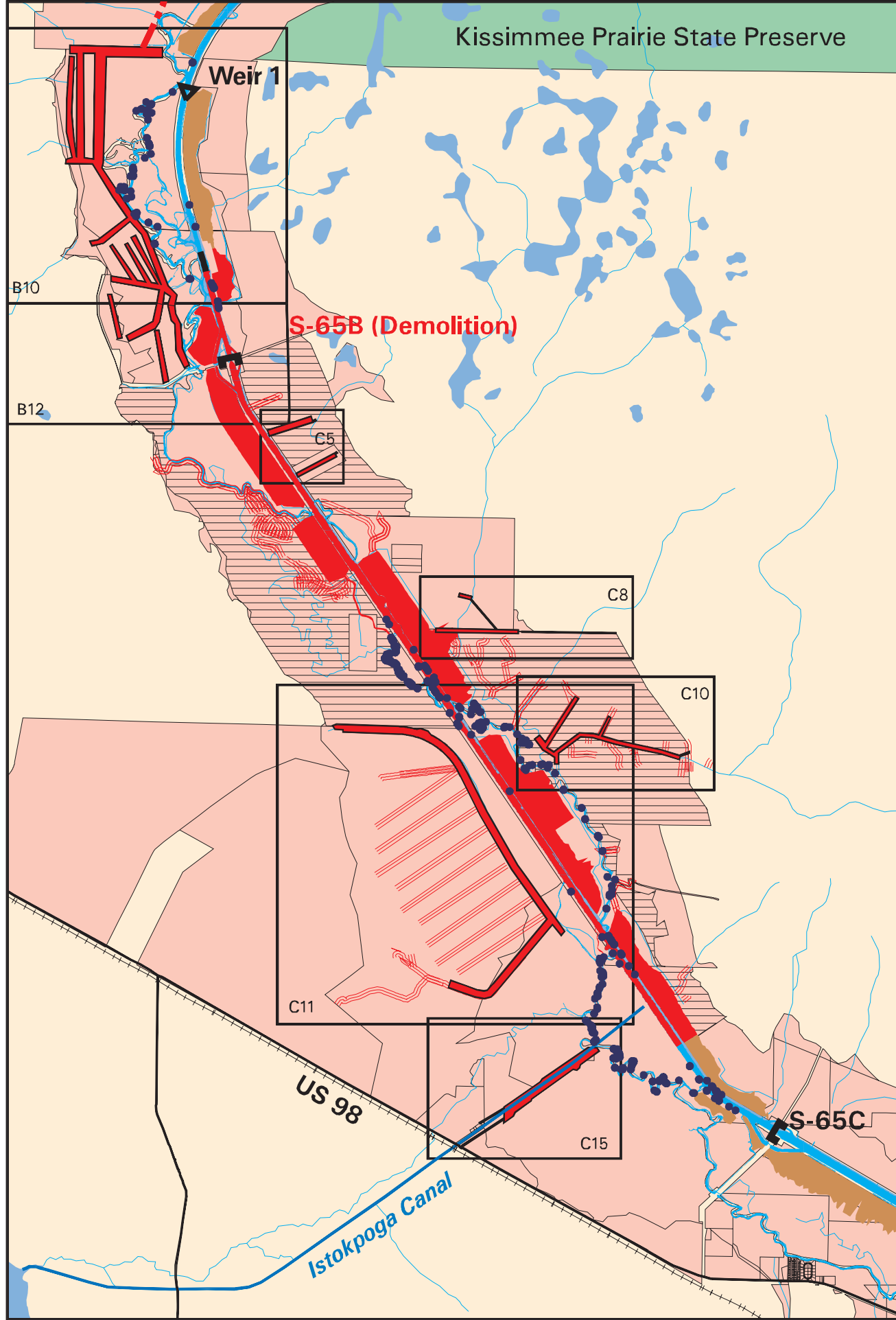
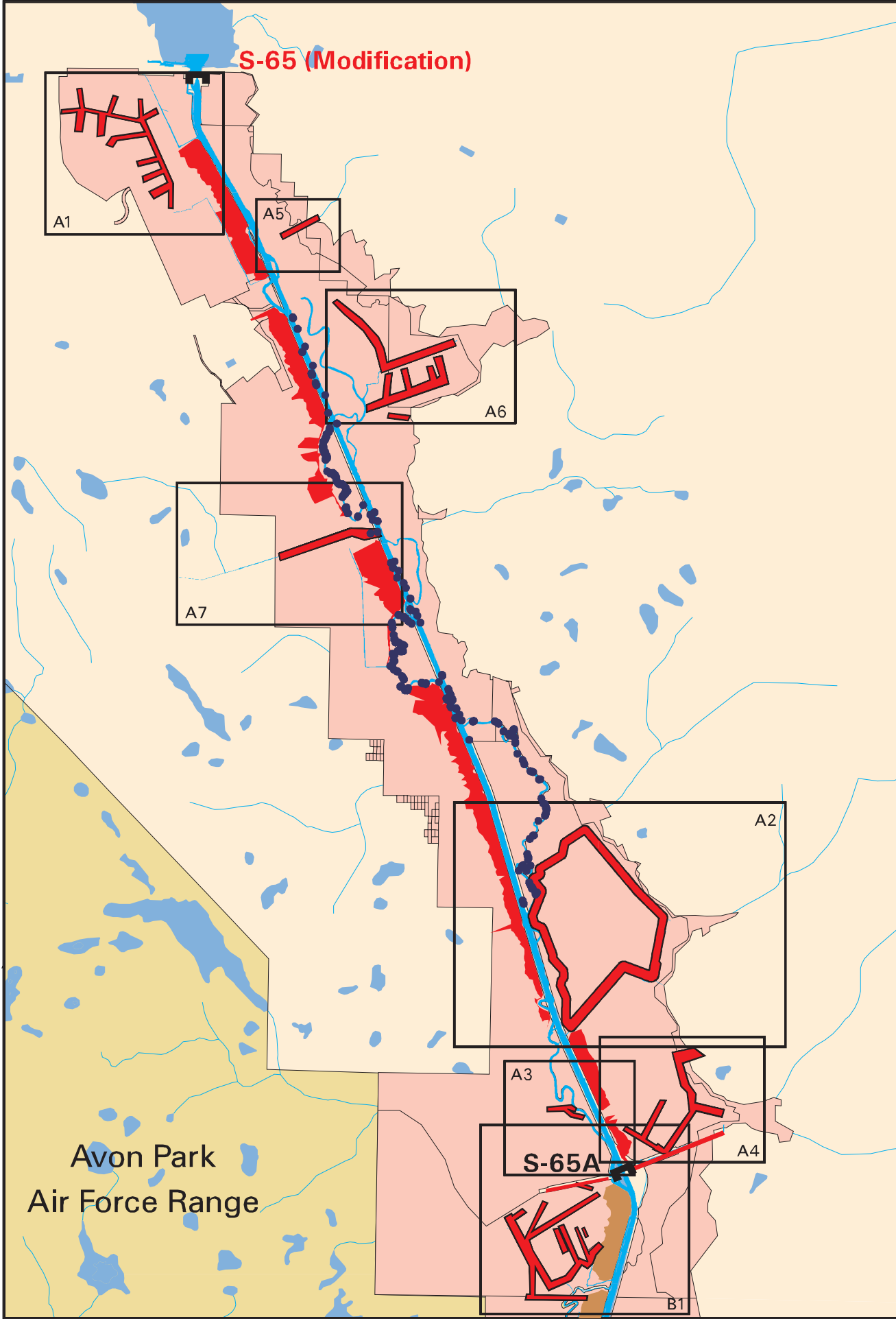
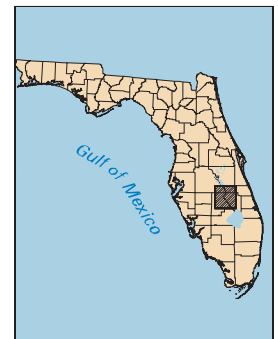
# Turtle Sample Sites Relative to 1998-99 Kissimmee River Restoration Lower Basin Construction Features

## LEGEND

-  Project Lands
-  Project Lands Requiring SFWMD Fence Construction
-  Spoil Mounds
-  Spoil Mounds To Be Removed
-  Test Fill
-  Hydrography
-  US Army COE Local Levee & Farm Ditch Degradation Work Area
-  Avon Park Fence
-  US Army COE Local Levee & Farm Ditch Degradation Work Limits
-  SFWMD Minor Local Levee & Farm Ditch Degradation Work Limits
-  Railroad
-  Turtle Sample Sites



Compiled by Bonnie Rose (SFWMD), Christine Carlson (SFWMD) and Jimmy Mathews (USACOE-JAX). General hydrography, structures, and project lands are from SFWMD pcovs. Detailed hydrography, SFWMD levee work, test fill, primary construction features, and sample sites are from the KRRP database. /proj/krrp1/brwork/maps/sampcons.gra 03/10/1998














**Pool A**

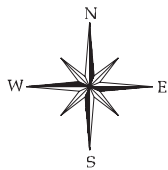
**Pool C**



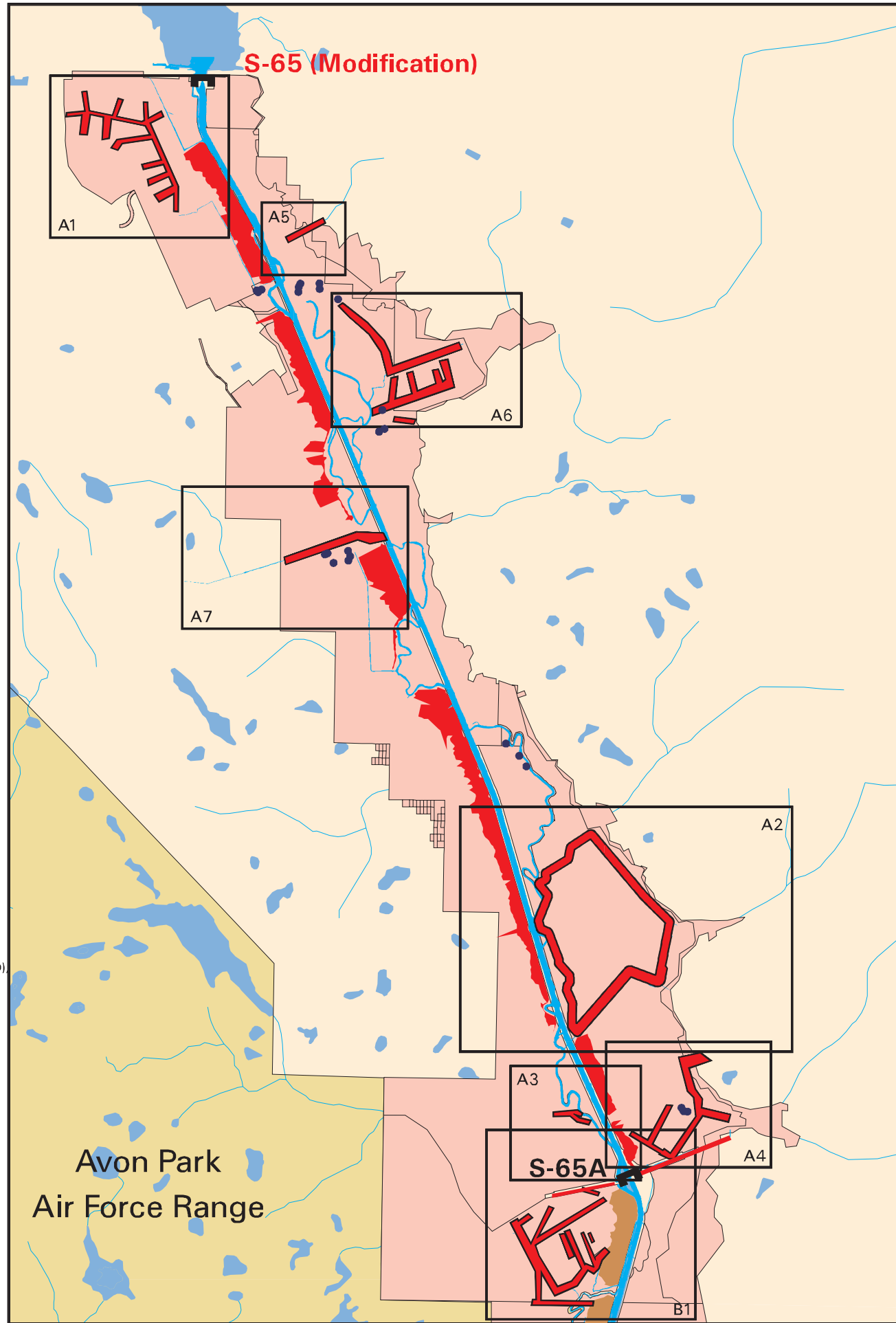
# Vegetation Sample Sites Relative to 1998-99 Kissimmee River Restoration Lower Basin Construction Features

## LEGEND

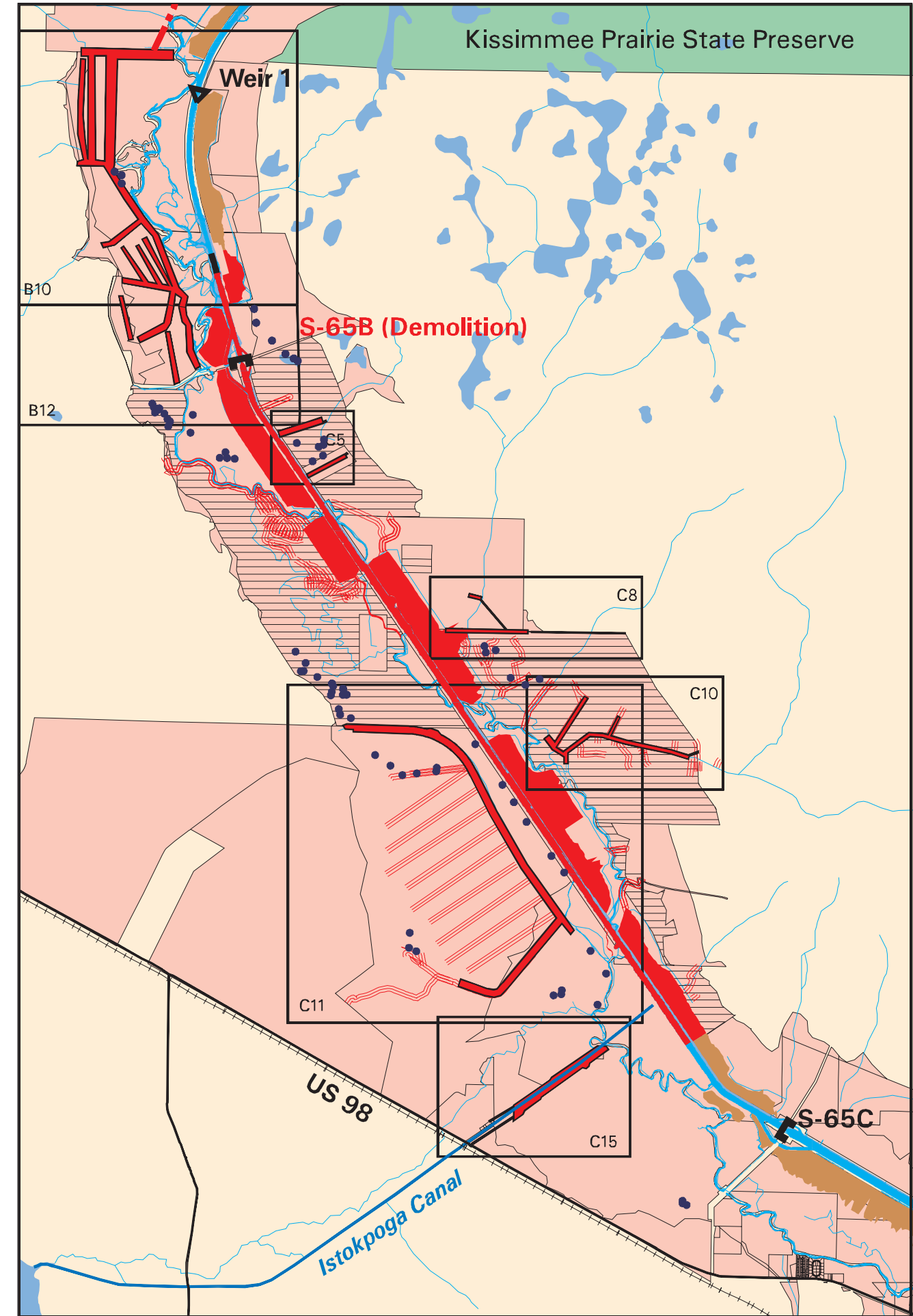
-  Project Lands
-  Project Lands Requiring SFWMD Fence Construction
-  Spoil Mounds
-  Spoil Mounds To Be Removed
-  Test Fill
-  Hydrography
-  US Army COE Local Levee & Farm Ditch Degradation Work Area
-  Avon Park Fence
-  US Army COE Local Levee & Farm Ditch Degradation Work Limits
-  SFWMD Minor Local Levee & Farm Ditch Degradation Work Limits
-  Railroad
-  Vegetation Sample Sites



Compiled by Bonnie Rose (SFWMD), Christine Carlson (SFWMD) and Jimmy Mathews (USACOE-JAX). General hydrography, structures, and project lands are from SFWMD pcovs. Detailed hydrography, SFWMD levee work, test fill, primary construction features, and sample sites are from the KRRP database. /proj/krrp1/brwork/maps/sampcons.gra 03/10/1998



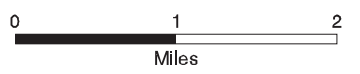
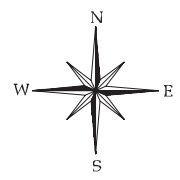
**Pool A**



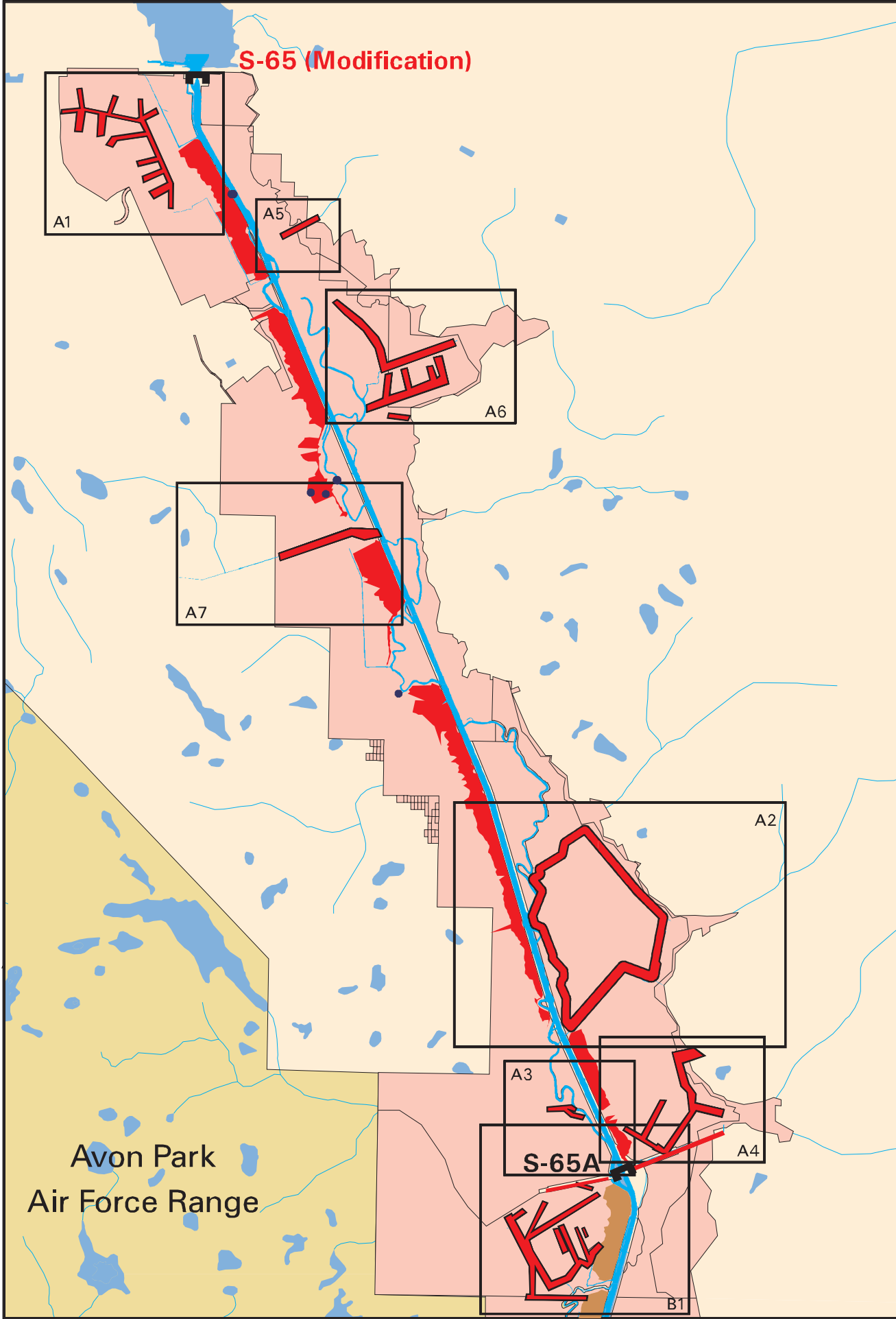
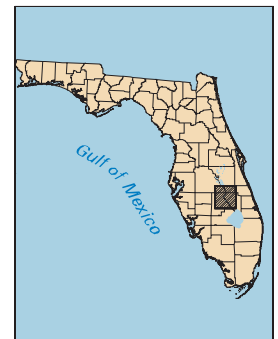
**Pool C**

# Water Quality & Stage Sites Relative to 1998-99 Kissimmee River Restoration Lower Basin Construction Feature

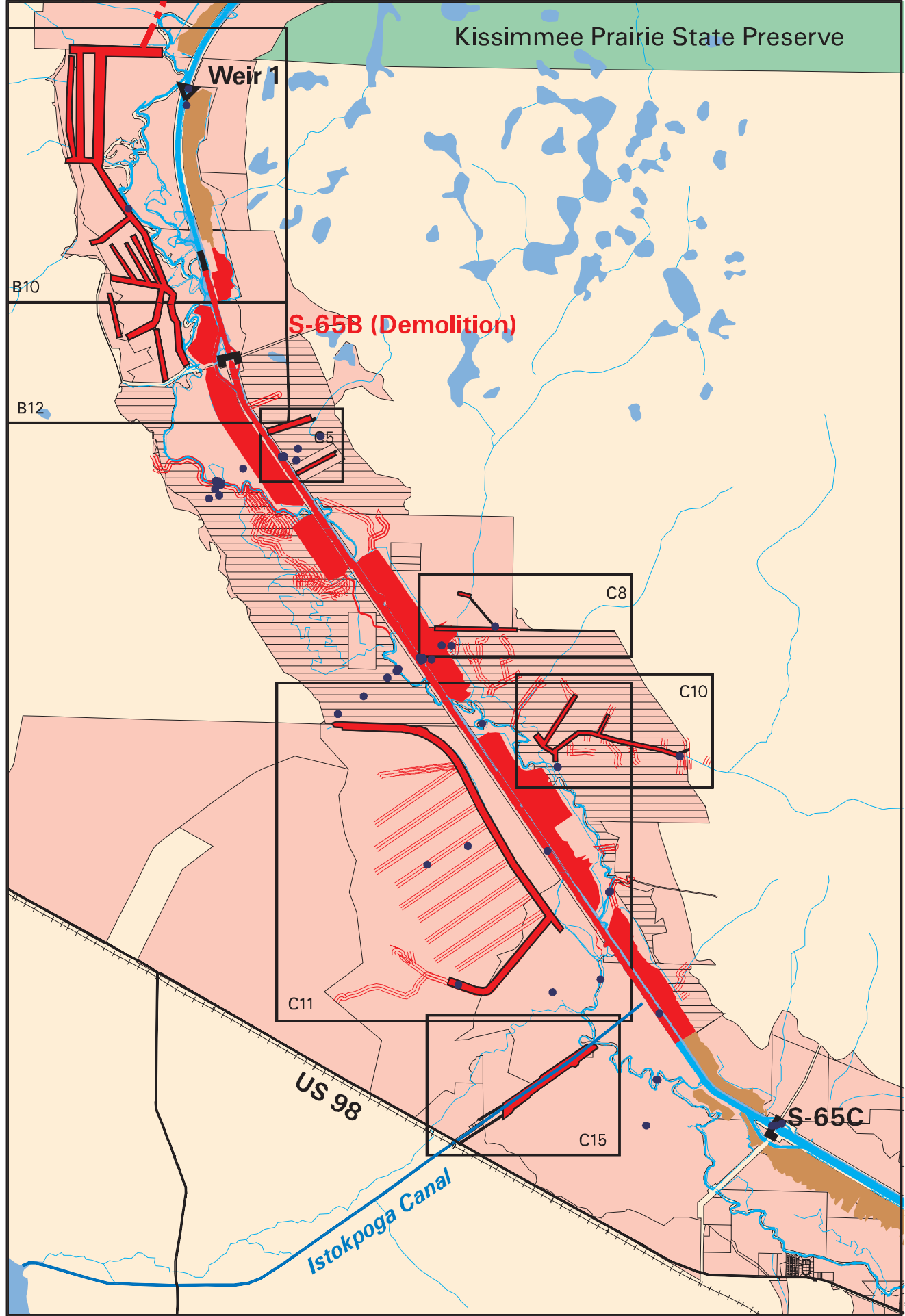
- LEGEND**
- Project Lands
  - Project Lands Requiring SFWMD Fence Construction
  - Spoil Mounds
  - Spoil Mounds To Be Removed
  - Test Fill
  - Hydrography
  - US Army COE Local Levee & Farm Ditch Degradation Work Area
  - Avon Park Fence
  - US Army COE Local Levee & Farm Ditch Degradation Work Limits
  - SFWMD Minor Local Levee & Farm Ditch Degradation Work Limits
  - Railroad
  - Water Quality & Stage Sites



Compiled by Bonnie Rose (SFWMD), Christine Carlson (SFWMD) and Jimmy Mathews (USACOE-JAX). General hydrography, structures, and project lands are from SFWMD pcovs. Detailed hydrography, SFWMD levee work, test fill, primary construction features, and sample sites are from the KRRP database. /proj/krrp1/brwork/maps/sampcons.gra 03/10/1998



**Pool A**



**Pool C**