

JANUARY 2025

BIG CYPRESS BASIN HYDROLOGIC REPORT*



* ABBREVIATED

sfwmd.gov

ABBREVIATED

SUMMARY OF HYDROLOGIC CONDITIONS IN THE BIG CYPRESS BASIN

JANUARY 2025

SUMMARY

La Nina's effect on Florida weather during January has been quite pronounced. Very little rainfall fell over the Basin and the region only accumulated 0.77 inches compared the average of 2.0 inches.

Even with only 38% of normal rainfall, surface water levels remain above average for January. Most canals are within between the 75th and 90th percentile which indicates a successful transition to dry season operations was performed. Canal levels are expected to recede further with the dry conditions but should trend above average as February passes.

JANUARY 2025 BCB RAINFALL

The Basin-wide monthly average was 0.77 inches, well below the historical monthly average of 2.0 inches (38% of historical) (**Figures 1, 2, Table 1**). The little rainfall that the area did receive was spread out over several cold front passages that typically only accounted for about one-tenth of an inch of rain per weather system. The rainfall distribution was consistent throughout the Basin, with the highest rainfall of 1.34 inches at site R-13 (IMMOKALEE LANDFILL). The lowest rainfall of 0.45 inches was recorded at R-6 (DAN HOUSE PRAIRIE). **Figure 3a** shows the average rainfall for each of the Basin's watersheds based on gauge adjusted radar. The rainfall totals and their locality distribution across the BCB/Lower West Coast are shown on **Figures 3** and **4**.

BIG CYPRESS BASIN CANAL SYSTEMS

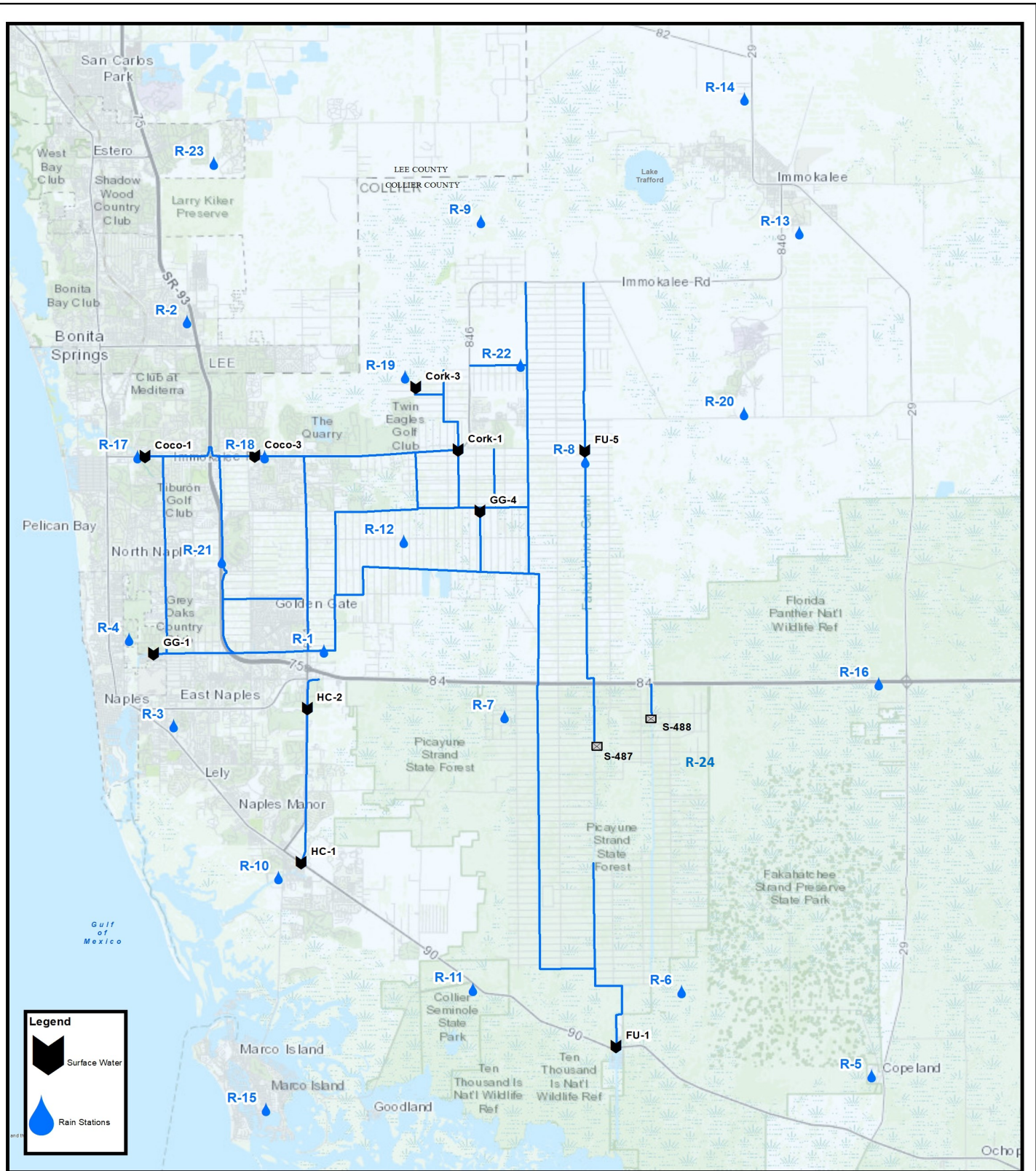
For all of January, the canals were maintained in water conservation mode to hold as much water as possible to promote groundwater recharge. All water control structures remained fully closed throughout the month to conserve water. The Golden Gate and Cocohatchee systems were maintained at the upper range of water conservation operational ranges, but some reaches did begin to recede towards the end of the month with the absence of rainfall. The Faka Union and Henderson Creek systems remained fully closed, but the typical dry season recession started in late 2024 however levels remain normal for January. Faka Union and Henderson Creek canal water levels are more sensitive to water use withdrawals. **Figures 5** through **8** summarize water levels throughout the BCB canals systems.

CORKSCREW SWAMP

Surface water levels in Corkscrew Swamp are generally between the 50th and 75th percentile for January. Water levels have been receding along normal trends given the absence of rainfall. The standard figures and charts will be included in the February report next month.

BIG CYPRESS BASIN & LOWER WEST COAST GROUNDWATER LEVELS

The current reporting (02/03/2025) for the Lower West Coast [LWC] groundwater levels show almost all wells in the Basin have decreased throughout January. Even with the typical dry season decrease most remain close to average for January. The typical tables and charts will be provided in the February report.



DISCLAIMER
 Any information, including but not limited to software and data, received from the South Florida Water Management District ("District") in fulfillment of a request is provided "AS IS" without warranty, of any kind, and the District expressly disclaims all express and implied warranties, including but not limited to the implied warranties of merchantability and fitness for a particular purpose. The District does not warrant, guarantee, or make any representations regarding the use, or the results of the use, of the information provided to you by the District in terms of correctness, accuracy, reliability, timeliness or otherwise. The entire risk as to the results and performance of any information obtained from the District is entirely assumed by the recipient.

This map is a conceptual tool utilized for project development only. This map is not self-executing or binding, and does not otherwise affect the interests of any persons including any vested rights or existing users of real property.

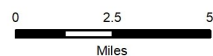


FIGURE 1
Hydrologic Station Map

Collier County, Florida



BIG CYPRESS BASIN
 SFWMD
 2660 Horseshoe Dr. N.
 Naples, Florida 34104
 239-263-7615



TABLE 1
RAINFALL REPORT - JANUARY 2025
DISTRICT/BASIN RAINFALL STATIONS
 (ALL NUMBERS ARE IN INCHES)

STATION INDEX NO.	STATION NAME	Jan-25	LONG TERM MONTHLY AVERAGE	MONTHLY DIFFERENCE	CALENDAR YEAR 2025 CUMULATIVE TOTAL	AVERAGE CALENDAR YEAR TO DATE	YEAR TO DATE DIFFERENCE
R-1	GG#3	0.69	2.63	-1.94	0.69	2.63	-1.94
R-2	BONITA SPRINGS WATER PLANT	0.55	2.01	-1.46	0.55	2.01	-1.46
R-3	COLLIER COUNTY COURTHOUSE	0.66	1.90	-1.24	0.66	1.90	-1.24
R-4	FREEDOM PARK	0.64	2.58	-1.94	0.64	2.58	-1.94
R-5	FAKAHATCHEE STRAND HQ	0.50	1.77	-1.27	0.50	1.77	-1.27
R-6	DAN HOUSE PRAIRIE	0.45	1.57	-1.12	0.45	1.57	-1.12
R-7	SGGE WEATHER STATION	0.52	1.78	-1.26	0.52	1.78	-1.26
R-8	FAKA UNION #5	1.09	2.80	-1.71	1.09	2.80	-1.71
R-9	CORKSCREW SWAMP NORTH END	0.92	1.92	-1.00	0.92	1.92	-1.00
R-10	ROOKERY BAY HQ	0.51	2.04	-1.53	0.51	2.04	-1.53
R-11	COLLIER SEMINOLE STATE PARK	0.78	1.85	-1.07	0.78	1.85	-1.07
R-12	G.G. FIRE STATION	0.85	2.00	-1.15	0.85	2.00	-1.15
R-13	IMMOKALEE LANDFILL	1.34	2.18	-0.84	1.34	2.18	-0.84
R-14	IFAS	1.08	1.97	-0.89	1.08	1.97	-0.89
R-15	MARCO R.O. PLANT	0.64	2.45	-1.81	0.64	2.45	-1.81
R-16	FAKAHATCHEE STRAND NORTH END	0.79	2.37	-1.58	0.79	2.37	-1.58
R-17	COCO#1	0.71	1.81	-1.10	0.71	1.81	-1.10
R-18	COCO#3	0.82	1.76	-0.94	0.82	1.76	-0.94
R-19	BIRD ROOKERY	1.02	1.74	-0.72	1.02	1.74	-0.72
R-20	AVE MARIA	0.77	2.20	-1.43	0.77	2.20	-1.43
R-21	I75W2	0.68	1.74	-1.06	0.68	1.74	-1.06
R-22	GG#7	1.05	1.63	-0.58	1.05	1.63	-0.58
R-23	FPWX	0.63	1.86	-1.23	0.63	1.86	-1.23
R-24	DSOTO10	0.79	1.63	-0.84	0.79	1.63	-0.84
AVERAGES		0.77	2.01	-1.24	0.77	2.01	-1.24

BCB ANNUAL RAINFALL
MONTHLY AVERAGE & HISTORICAL AVERAGE TRENDS
(FROM BCB RAINFALL GAUGE DATA)

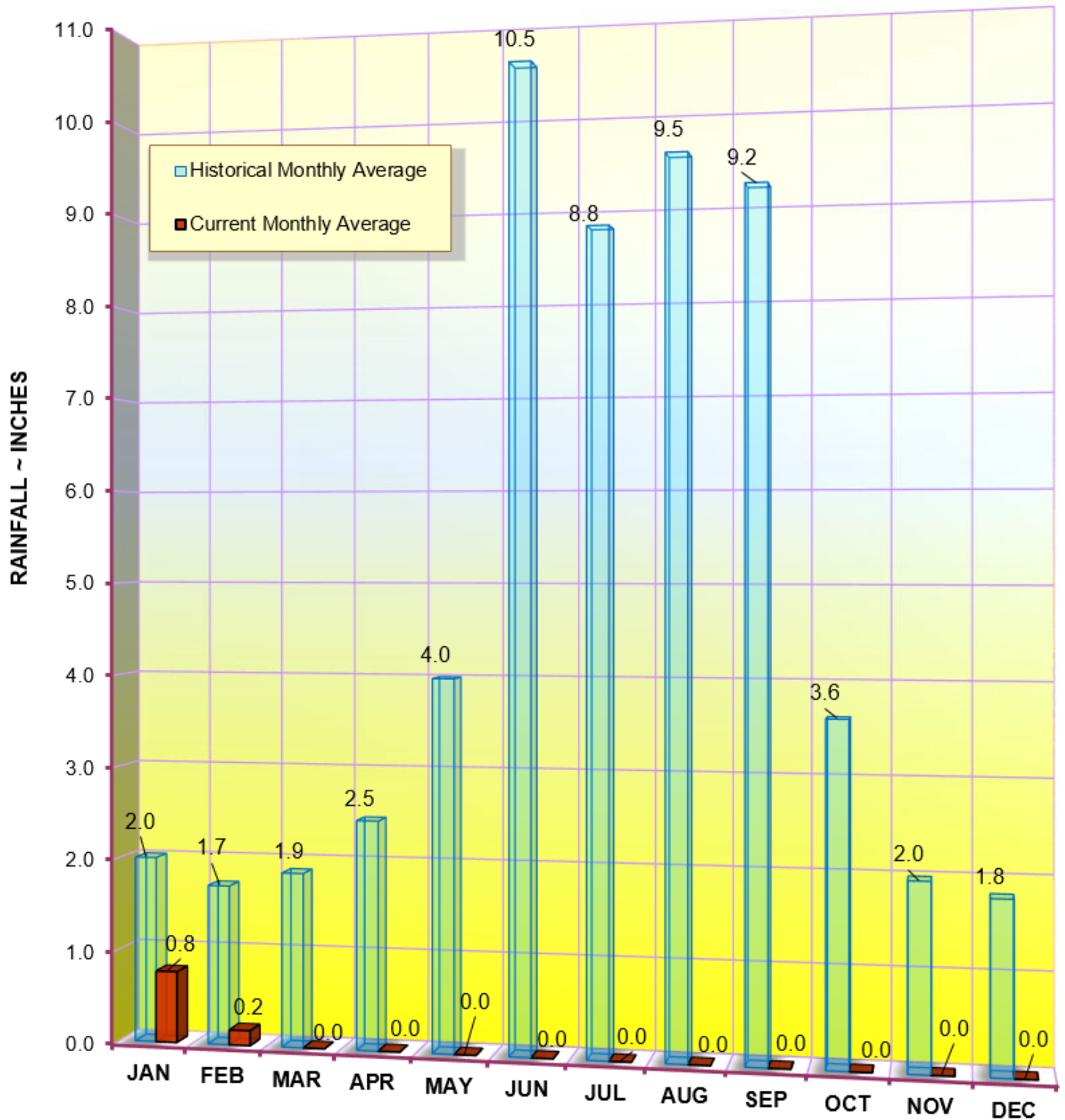


FIGURE 2
BCB GAUGE RAINFALL MONTHLY AVERAGES

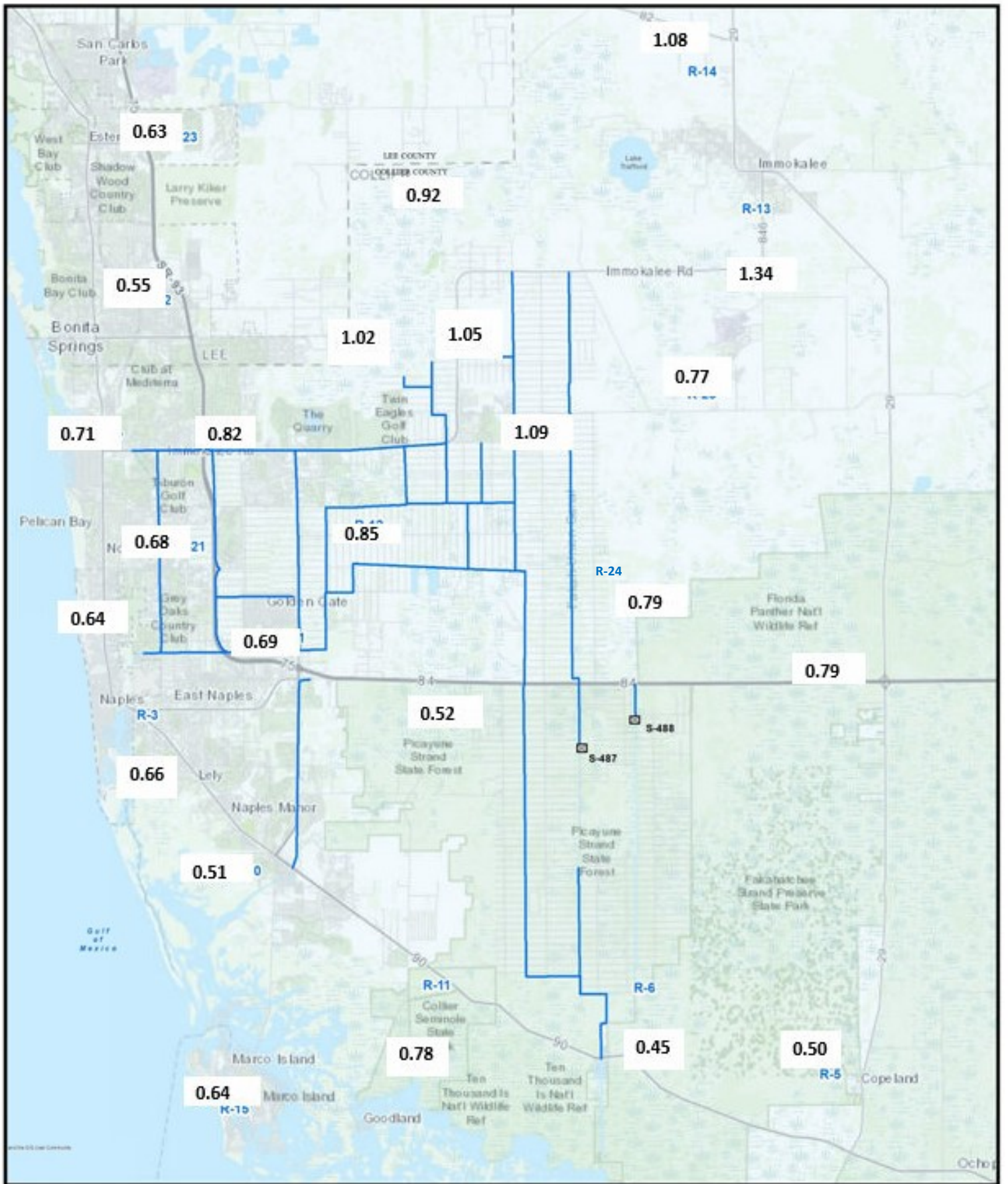
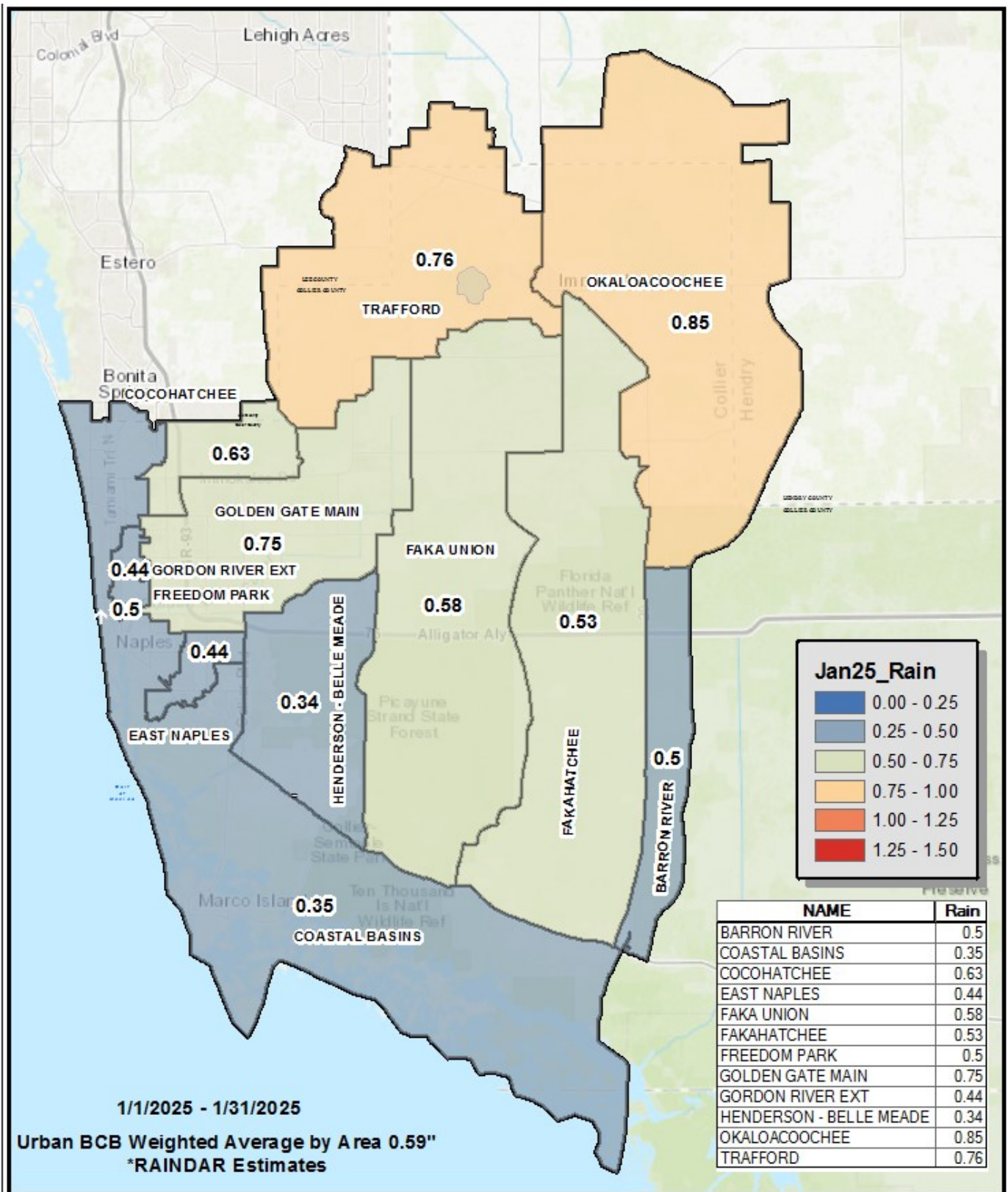



FIGURE 3
BCB RAINFALL DISTRIBUTION
JANUARY 2025



© 2025 BCB
 City of Bonita, including but not limited to all water and sewer services, located within the Bonita Florida Water Management District ("District") in Collier County, Florida. All rights reserved. This map is for informational purposes only and does not constitute a contract or warranty of any kind. The District is not responsible for any errors or omissions in this map. The District is not liable for any damages, including but not limited to, consequential or special damages, arising out of the use of this map. The District is not liable for any damages, including but not limited to, consequential or special damages, arising out of the use of this map. The District is not liable for any damages, including but not limited to, consequential or special damages, arising out of the use of this map.

This map is a product of the District's GIS department. It may not be used for any other purpose without the District's written permission. The District is not responsible for any errors or omissions in this map. The District is not liable for any damages, including but not limited to, consequential or special damages, arising out of the use of this map.


*Rainfall estimates based on gauge adjusted radar




BIG CYPRESS BASIN
 SFWMD
 2660 Horseshoe Dr. N.
 Naples, Florida 34104
 239-263-7615

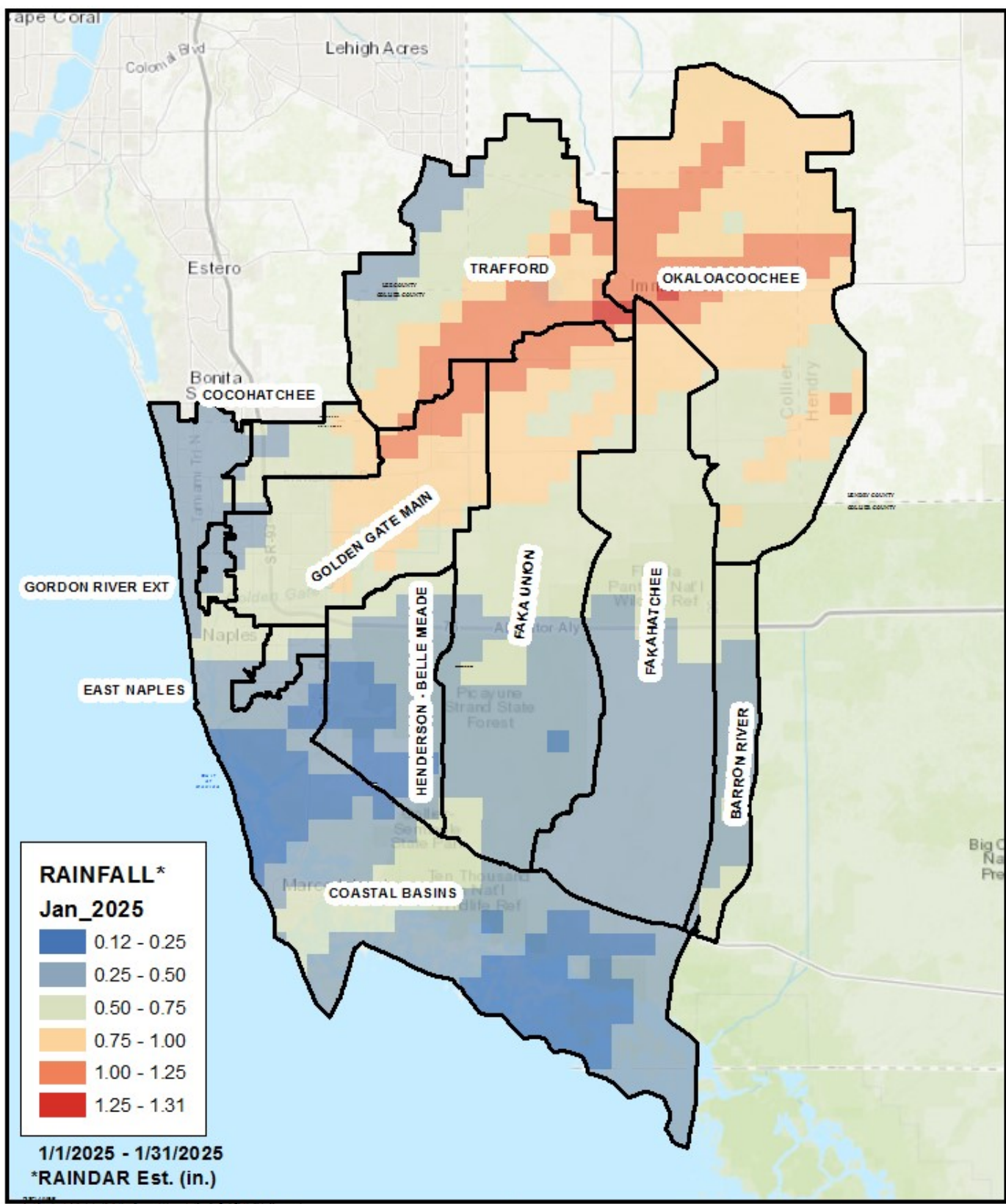
BCB RAINFALL
SPATIAL DISTRIBUTION

Urban Collier County, Florida





JANUARY 2025—FIGURE 3a






© 2025 Florida Department of Environmental Protection. All rights reserved. This map is a representation of the information provided and does not constitute a warranty of any kind. The Florida Department of Environmental Protection is not responsible for any errors or omissions in this map. The Florida Department of Environmental Protection is not responsible for any damages, including consequential damages, arising from the use of this map. The Florida Department of Environmental Protection is not responsible for any claims, including consequential claims, arising from the use of this map. The Florida Department of Environmental Protection is not responsible for any claims, including consequential claims, arising from the use of this map.

This map is not intended to be used for navigation purposes. This map is not intended to be used for navigation purposes. This map is not intended to be used for navigation purposes.



*Rainfall estimates based on gauge adjusted radar

 BIG CYPRESS BASIN SFWMD 2660 Horseshoe Dr. N. Naples, Florida 34104 239-263-7615	BCB RAINFALL SPATIAL DISTRIBUTION Urban Collier County, Florida	 
--	---	--

JANUARY 2025—FIGURE 4

Figure 5 Golden Gate Canal Historic Average Daily Headwater Percentiles

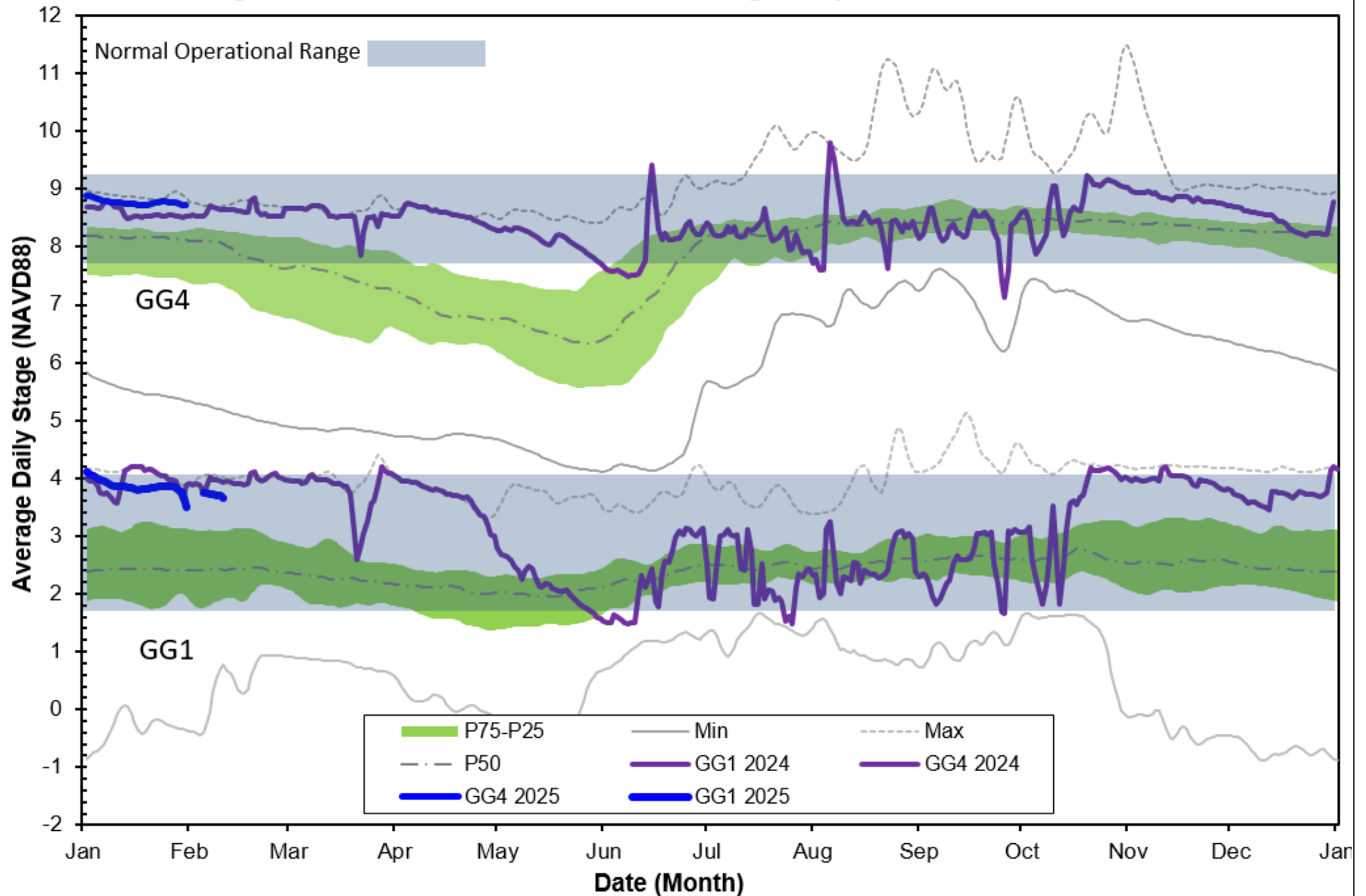


Figure 6A Cocohatchee Canal Historic Average Daily Headwater Percentiles

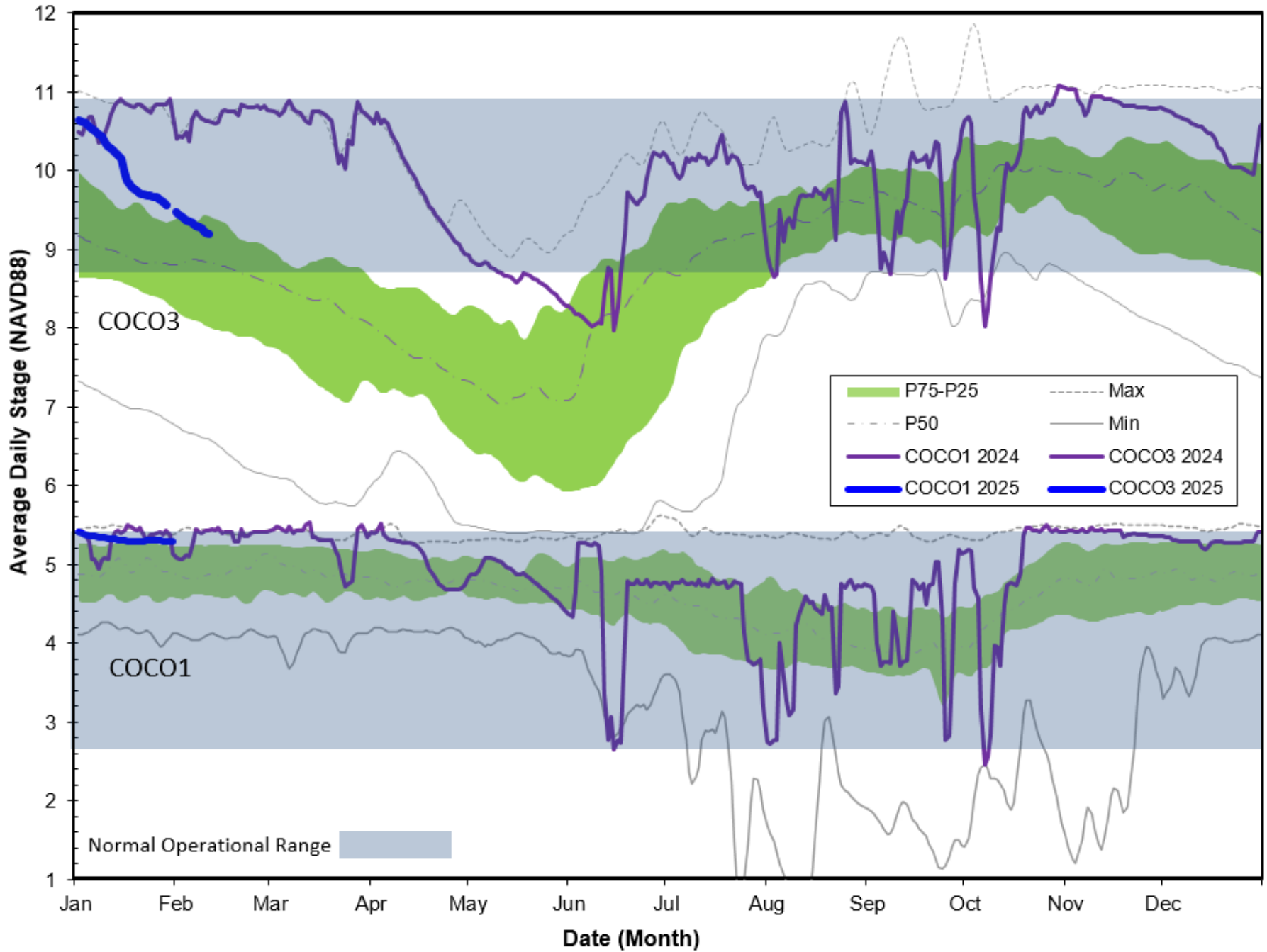
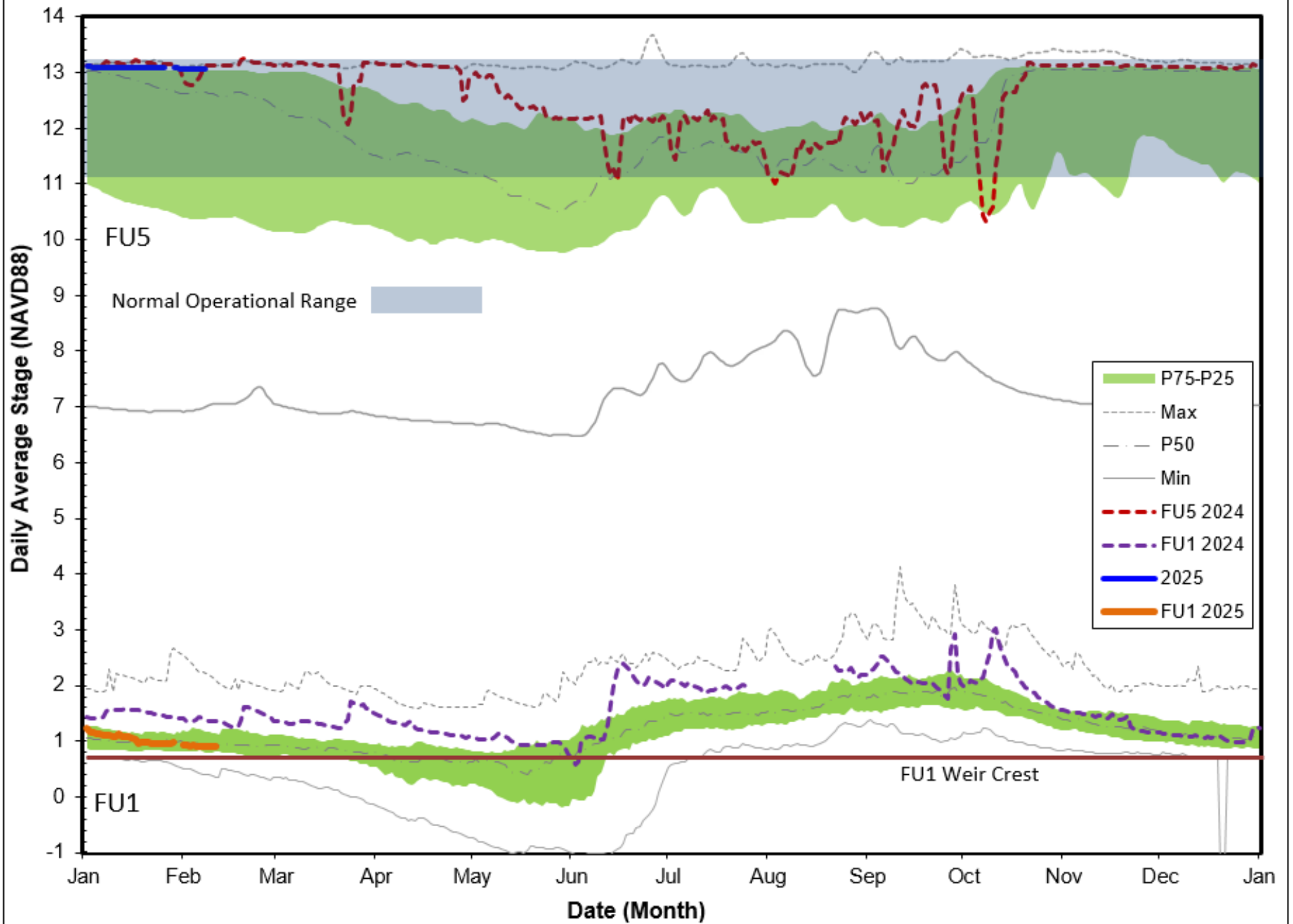


Figure 7A Faka Union Canal Historic Average Daily Headwater Percentiles (1977-2024)



HC1 Historic Average Daily Headwater Percentiles

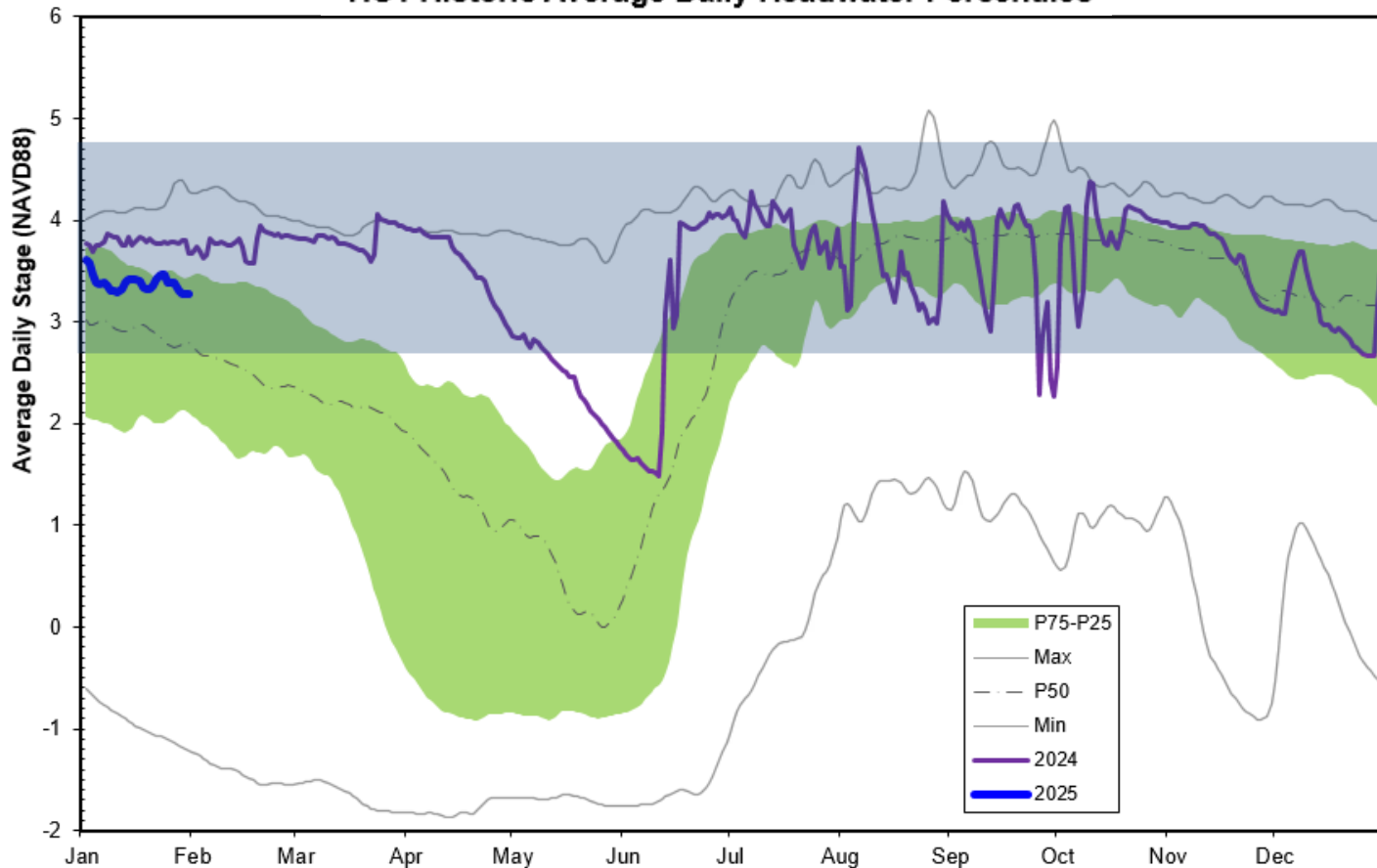


Figure 8B HC2 Historic Average Daily Headwater Percentiles

