



# Shark River Slough Final WY2023 Annual Compliance Results

**Chelsea Qiu, P.E., Ph.D.**

Lead Engineer

Compliance Assessment & Reporting Section

Water Quality Bureau

Technical Oversight Committee

June 25, 2024



[sfwmd.gov](http://sfwmd.gov)

## Shark River Slough TP Concentration Compliance Tracking

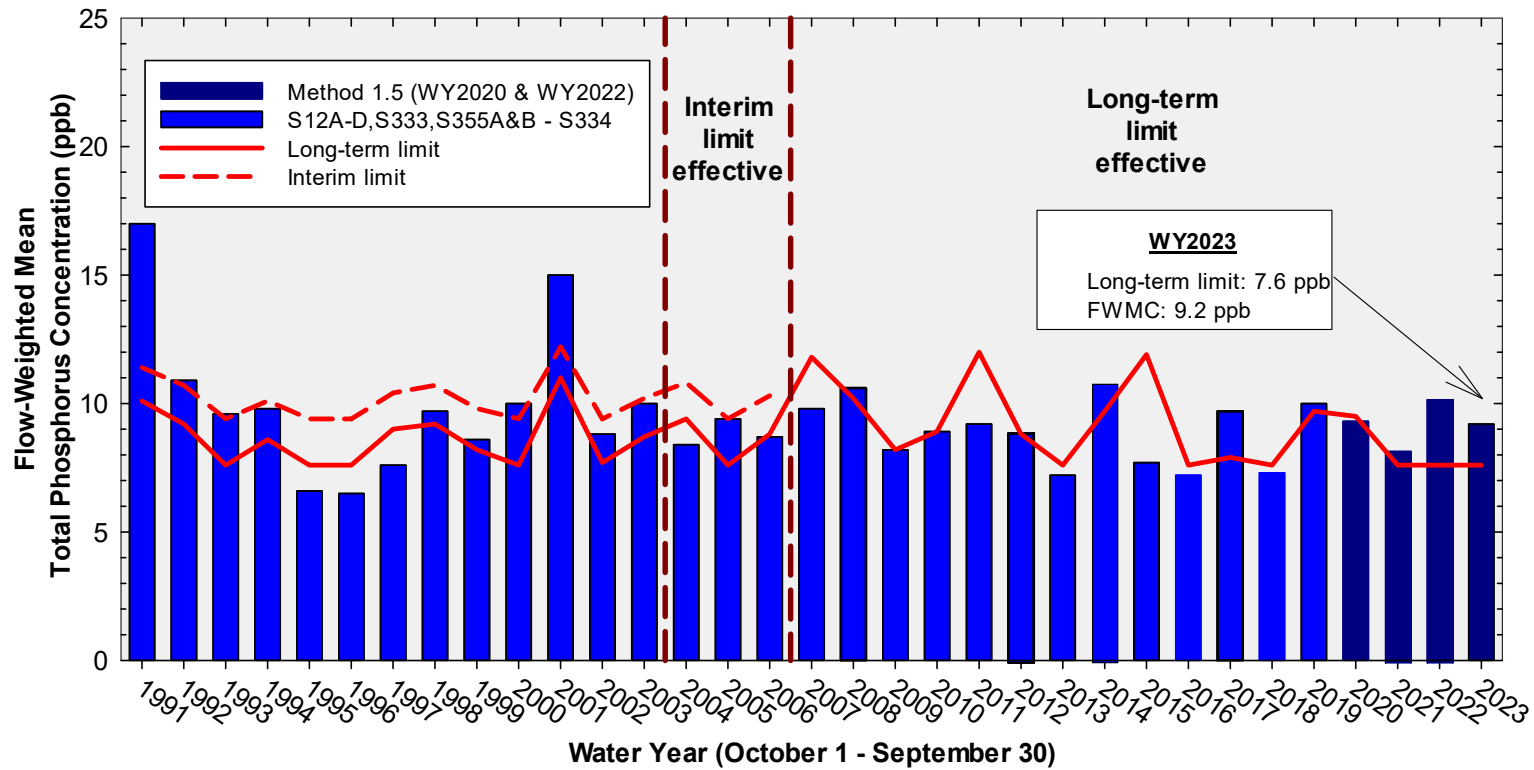
12-Month Period	Total Flow (kac-ft)	Long-Term Limit (ppb) <i>Effective 12/31/2006</i>	Flow-Weighted Mean TP Concentration (ppb)	Percent of Sampling Events Greater than 10 ppb	
				Guideline (%)	Observed (%)
<b>3rd Quarter 2023 Compliance Tracking</b>					
<b>Aug 2022 - Jul 2023</b>	<b>1,146.3</b>	<b>7.6</b>	<b>9.9</b>	<b>40.1</b>	<b>51.9</b>
<b>Sep 2022 - Aug 2023</b>	<b>1,175.0</b>	<b>7.6</b>	<b>9.7</b>	<b>40.1</b>	<b>50.0</b>
<b>Oct 2022 - Sep 2023</b>	<b>1,246.5</b>	<b>7.6</b>	<b>9.2</b>	<b>40.1</b>	<b>42.3</b>

**Shark River Slough Final Result:**

**FWMC computed as S12s + [S333 + S333N + S355A + S355B + minimum of (S356, S335) – S334] using all flow and TP grabs on bi-weekly compliance sampling dates.**

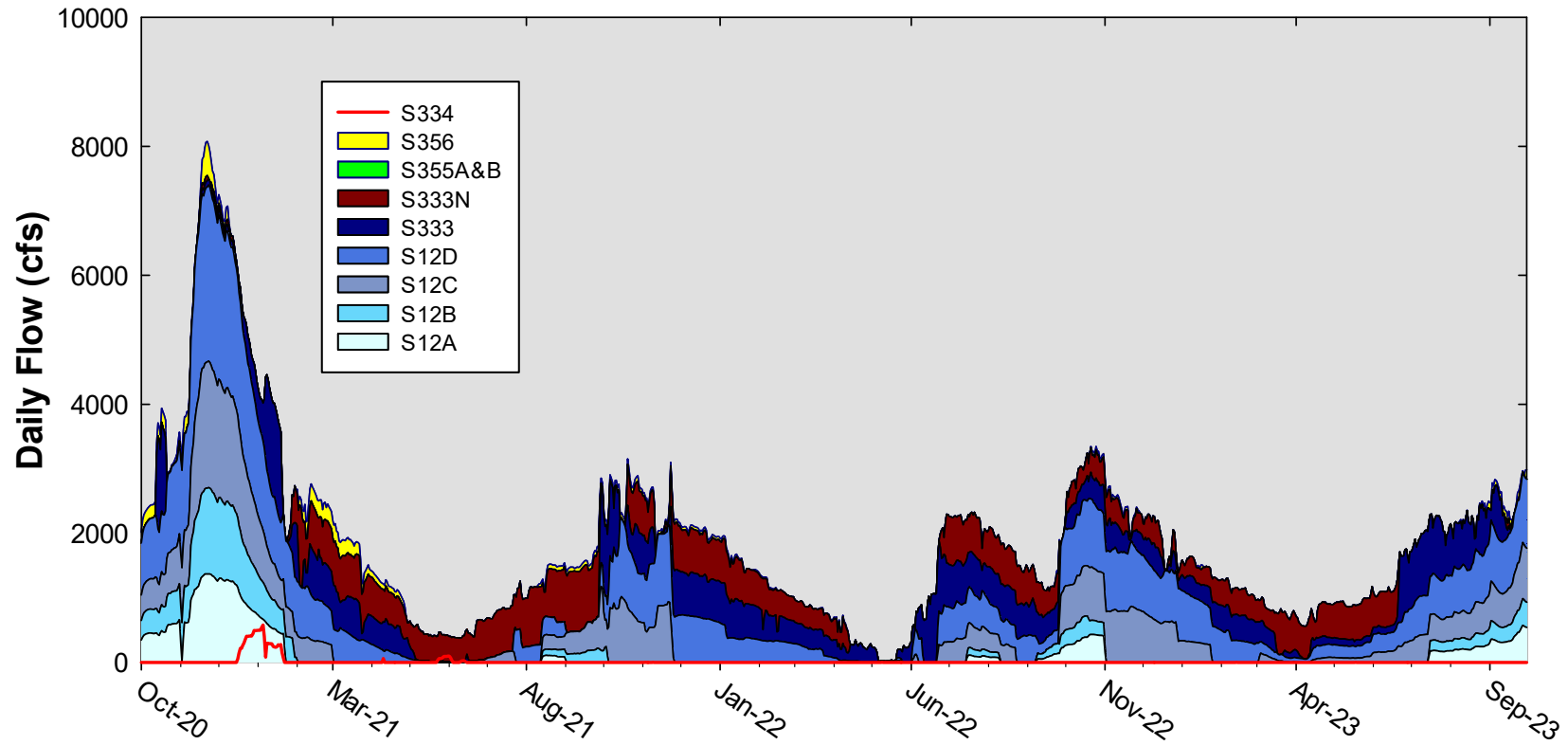
**S334 flow was not excluded from the flow for long-term limit calculations.**

## Annual Flow-weighted Mean Concentrations Inflows to ENP through Shark River Slough

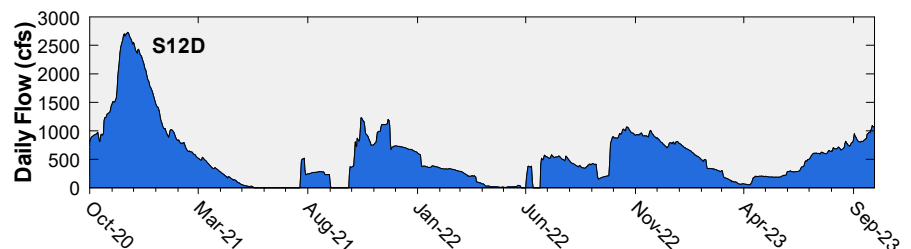
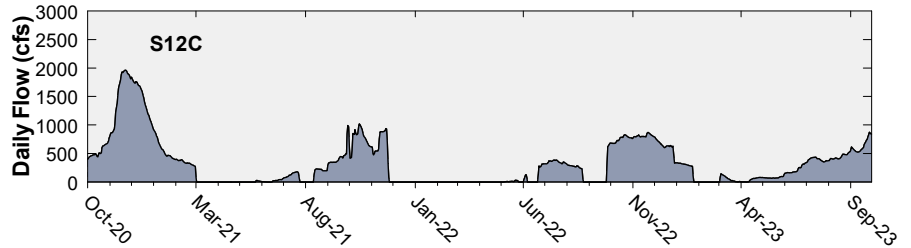
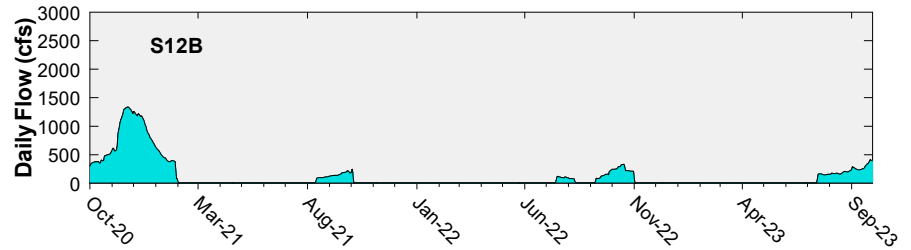
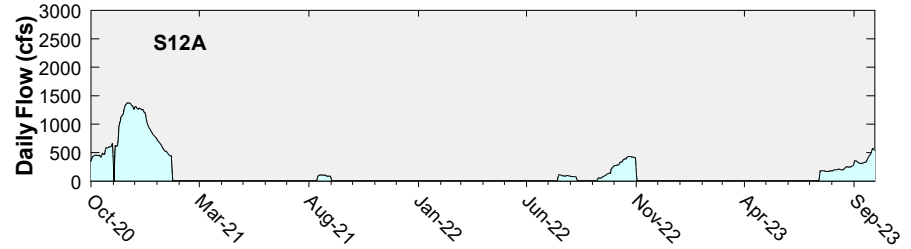


**12-month FWMC at the end of each water year  
compared to the TP interim and long-term limits**

## Shark River Slough Structure Daily Flows

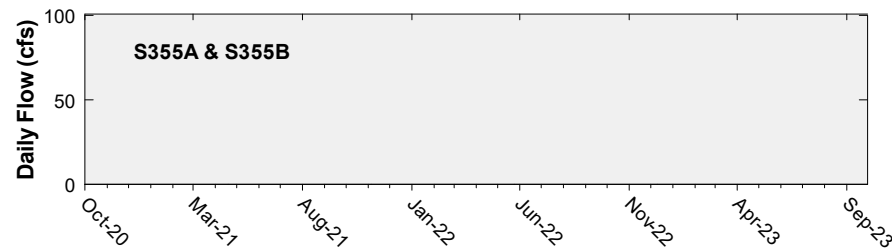
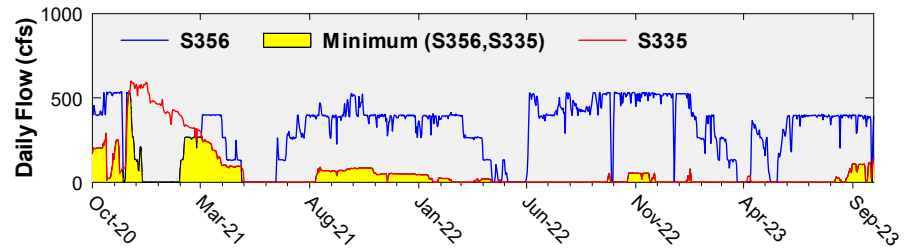
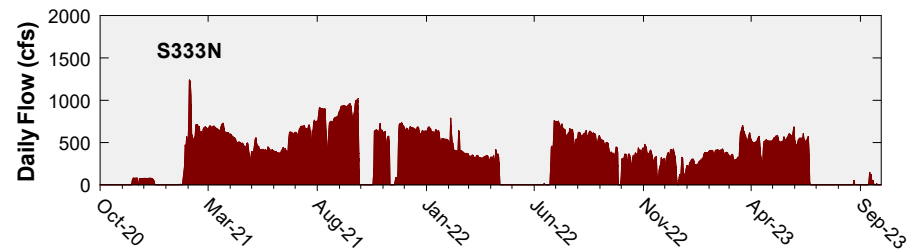
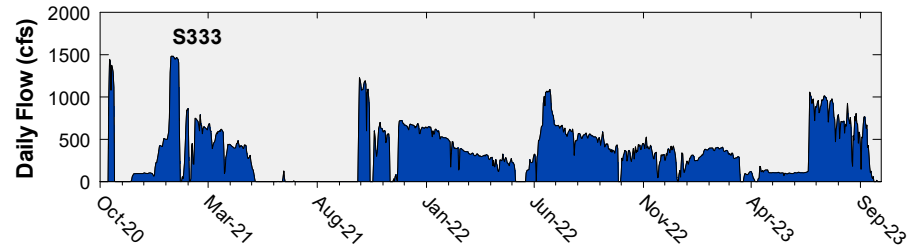


# Daily Flows at S12 Structures to Shark River Slough

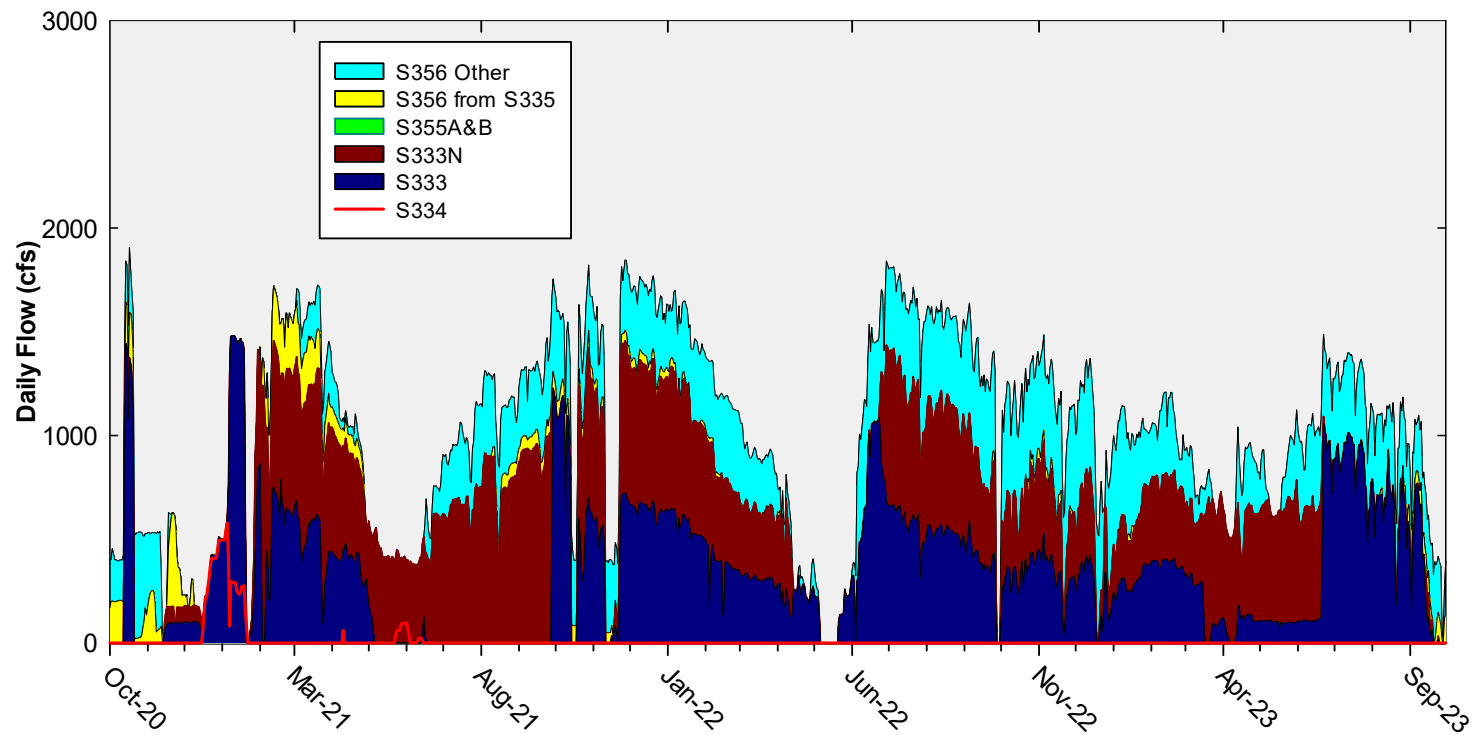


# Daily Flows at Individual Inflow Structures to Shark River Slough

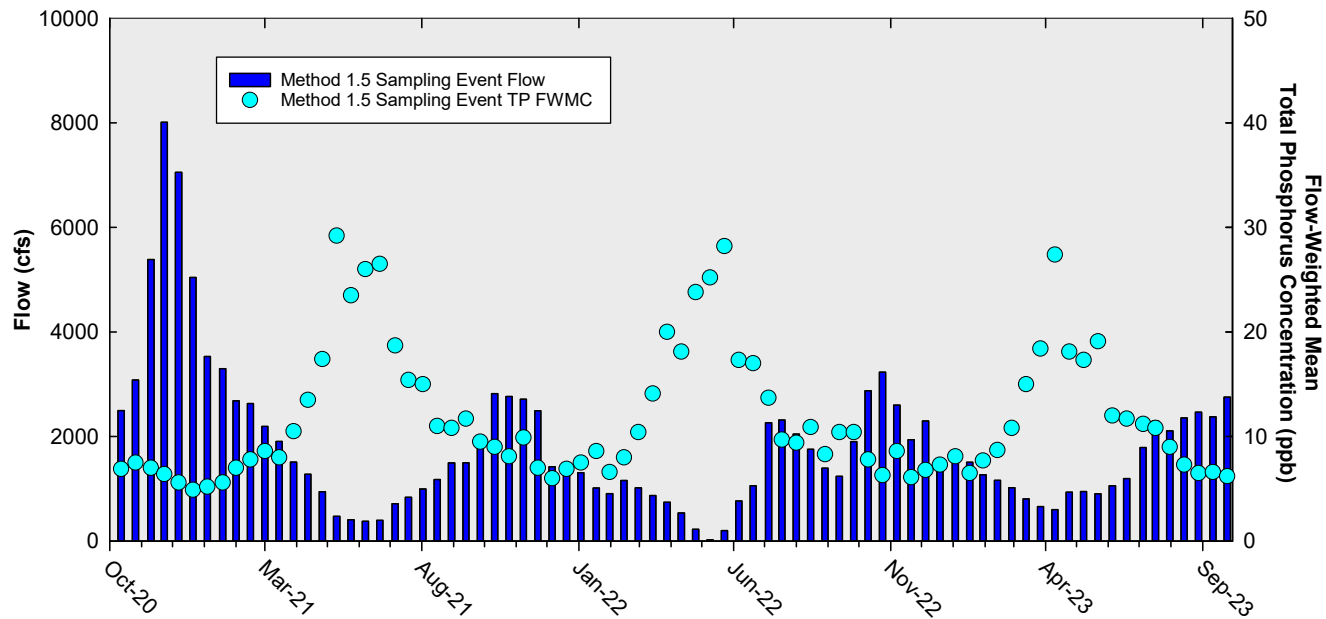
(There was no flow at S355A and S355B during the period)



## Daily Flows Into Shark River Slough through S333&S333N, S355A&B, and S356 and Out through S334



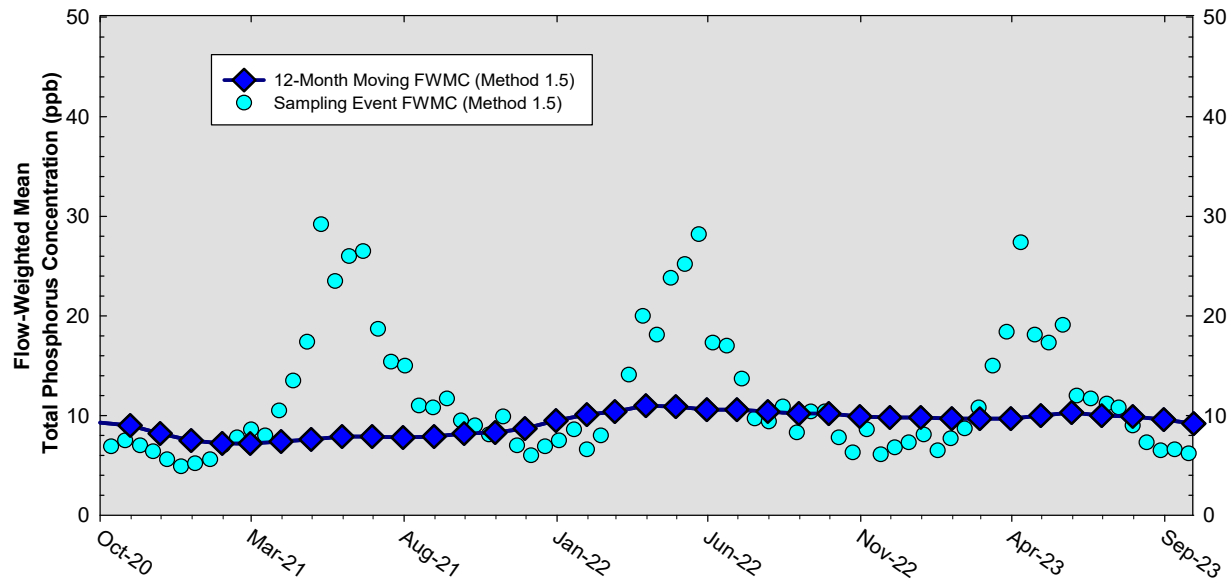
# Shark River Slough Sampling Event Flow and FWMC



**Flow to Shark River Slough and the corresponding TP FWMCs  
for individual sampling events**

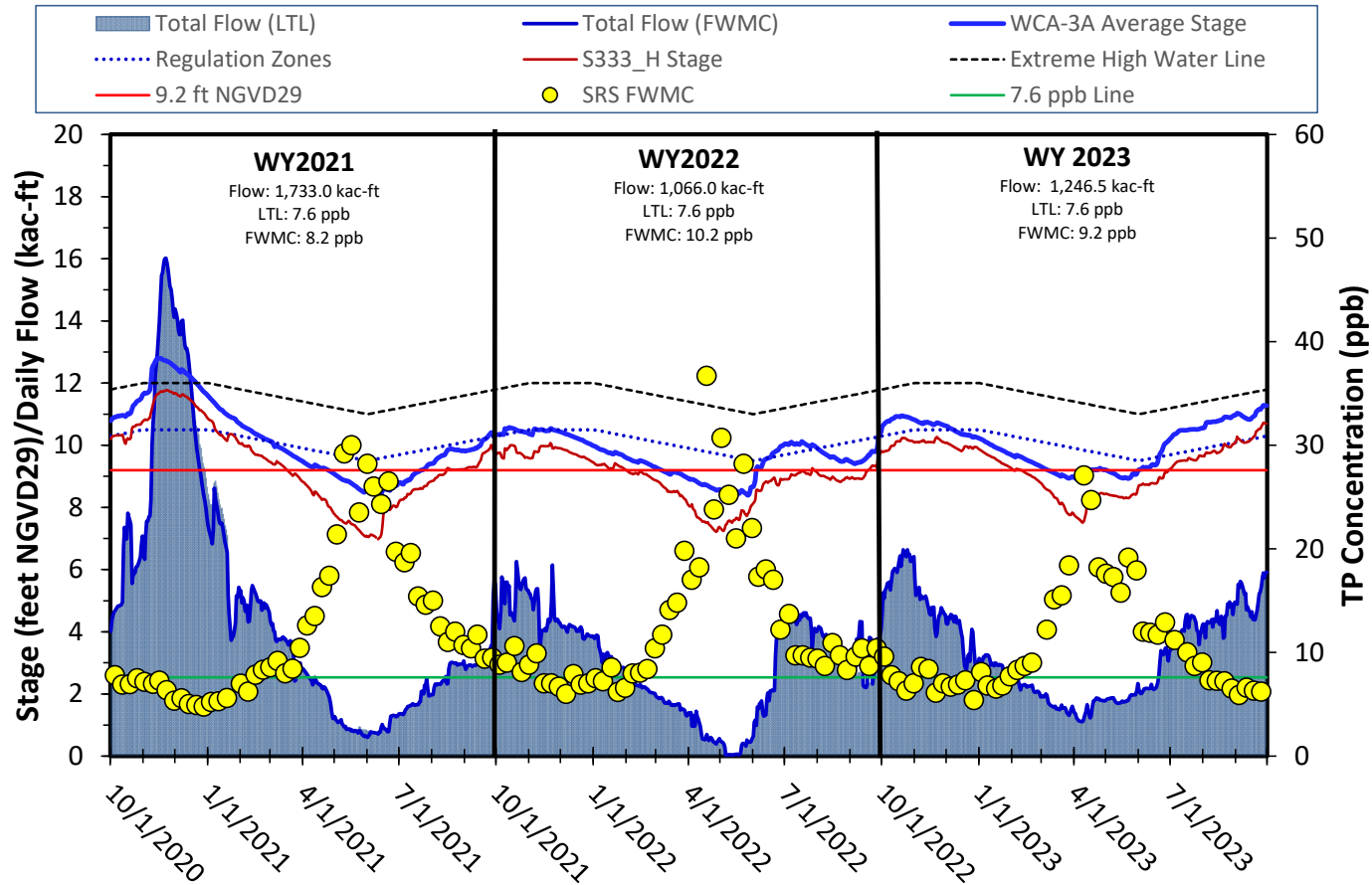


## Flow-Weighted Mean Concentrations Inflows to ENP through Shark River Slough



The composite TP concentration and 12-month FWMC at the end of each month for each sampling event

# WY2021, 2022 & 2023 Stage, Flow, and TP FWMC Inflows to ENP through Shark River Slough



Thank You

