

Disclaimer: Information contained in the report addresses environmental conditions only and is not the official South Florida Water Management District operations recommendation or decision.

## **M E M O R A N D U M**

**TO:** John Mitnik, Assistant Executive Director, Executive Office Staff

**FROM:** SFWMD Staff Environmental Advisory Team

**DATE:** June 17, 2026

**SUBJECT:** Weekly Environmental Conditions for Systems Operations

### **Summary**

#### **Weather Conditions and Forecast**

A subtropical ridge is forecast to promote a drier and more stable mid-level atmosphere, suppressing thunderstorm development, resulting in rainfall totals well below the climatological daily average. Under this type of environment, any afternoon storms that develop are likely to be isolated and relatively short-lived. On Thursday, moisture levels should begin to recover. However, rainfall coverage is still expected to remain below normal, with generally dry conditions along the coastal areas and the greatest potential for showers and thunderstorms focused across the central interior. By late week, the forecast becomes somewhat more complicated. A tropical disturbance over southeastern Texas may move offshore into the western Gulf of Mexico and could briefly organize into a tropical cyclone. Although this system is not expected to directly affect Florida, it may enhance moisture and storm activity along the frontal boundary. By the weekend, the frontal boundary and associated moisture may dip southward toward central Florida. If this occurs, rainfall amounts more typical of the wet season could return, with the greatest afternoon shower and thunderstorm activity along portions of the east coast. By Monday, the frontal boundary may weaken and dissipate while the subtropical ridge rebuilds across Florida. This would promote mid-level drying and increased atmospheric stability, potentially leading to below average daily rainfall. This pattern favors below-average total SFWMD rainfall for the 7-day period ending next Tuesday morning.

#### **Kissimmee**

Water levels in East Lake Toho and Lake Toho are being allowed to rise as rainfall permits. Releases from Lakes Kissimmee-Cypress-Hatchineha followed the Headwaters Revitalization Schedule Increment 1 Temporary Deviation Discharge Plan. Weekly average discharge on June 14, 2026, was 300 cfs at S-65 and 240 cfs at S-65A. Mean weekly water depth on the Kissimmee River floodplain decreased by 0.01 feet to 0.32 feet. The weekly average concentration of dissolved oxygen in the Kissimmee River decreased from 7.5 mg/L the previous week to 7.4 mg/L, which is above both the potentially lethal level of 1.0 mg/L and the stressful level of 2.0 mg/L for Florida bass and other species.

## **Lake Okeechobee**

Lake Okeechobee stage was 9.73 feet NAVD88 (11.04 feet NGVD29) on June 14, 2026, which was 0.16 feet lower than the previous week and 0.35 feet lower than a month ago. Average daily inflows (excluding rainfall) increased from 200 cfs the previous week to 250 cfs. Average daily outflows (excluding evapotranspiration) increased from 450 cfs the previous week to 1,800 cfs. The most recent non-obscured satellite image from June 14, 2026, NOAA's Harmful Algal Bloom Monitoring System suggests moderate to high cyanobacteria potential in Fisheating Bay and along much of the Indian Prairie shoreline. The June 4th wading bird survey counted approximately 4,680 birds across 8 flocks actively foraging around the lake. Provisional results from the May 26-27 water quality sampling showed 2 of the 25 phytoplankton samples collected had detectable levels of cyanotoxin (0.1 µg/L cylindrospermopsin), and 2 of the 25 samples had chlorophyll a values greater than 40 µg/L, indicating bloom level concentrations.

## **Estuaries**

Total inflow to the St. Lucie Estuary averaged 184 cfs over the past week with no flow coming from Lake Okeechobee. Mean salinities decreased at HR1 and the A1A Bridge sites and increased at the US1 Bridge site. Salinity in the middle estuary was in the optimal range (10–25) for adult eastern oysters.

Total inflow to the Caloosahatchee River Estuary averaged 490 cfs over the past week with 218 cfs coming from Lake Okeechobee. Over the past week, surface salinities decreased at Cape Coral and increased at the remaining sites in the estuary. Salinities were in the stressed range (10-15) for tape grass in the upper estuary at S-79 and Val I-75, and in the damaging range (>15) at Ft. Myers. Salinities were in the optimal range for adult eastern oysters at Cape Coral, and in the upper stressed range (>25) at Shell Point and Sanibel.

## **Stormwater Treatment Areas**

For the week ending Sunday, June 14, 2026, 600 acre-feet of Lake Okeechobee water was delivered to the FEBs/STAs. The total amount of Lake releases sent to the FEBs/STAs in WY2027 is approximately 6,500 acre-feet. The total amount of inflows to the STAs in WY2027 is approximately 23,000 acre-feet. Most online STA treatment cells are at or near target stage. STA-1E Central Flow-way is offline for post-construction activities. STA-1W Eastern Flow-way is offline for vegetation management activities. Operational restrictions are in effect in STA-1E Western Flow-way, STA-2 Flow-way 2, and STA-3/4 Eastern Flow-way for vegetation management activities. STA-1E Central Flow-way, STA-1W Eastern Flow-way and STA-2 Flow-ways 1 and 4 contain nests of Migratory Bird Treaty Act protected species. This week, if LOSOM recommends Lake releases to the WCAs and conditions allow, releases will be sent to STA-2, STA-3/4 and STA-5/6.

## **Everglades**

Below-average rainfall (0.97 inches) occurred across the Everglades Protection Area (EPA) last week and was distributed relatively uniformly throughout the system. The limited rainfall resulted in recession across most of the Everglades, with the exception of southern WCA-3A, which experienced a rise in water levels. Overall, the EPA exhibited

an average recession rate of 0.06 feet/week. Water depths in the northern portion of the system (WCA-1 and WCA-2) have now transitioned into below-average conditions, joining the central and southern regions of the Everglades, which have experienced below-average depths throughout the dry season and now into the start of the wet season. These dry conditions can have ecological consequences both system wide and within the central Everglades, including delaying the new production of now very limited prey populations, increasing the risk of damaging wildfires, enhanced peat oxidation, and potential ridge and slough degradation. Wading bird activity remains very limited due to the dry conditions with nesting in numbers only occurring in WCA-1. There is no foraging or nesting occurring in WCA-3A. Wood storks have abandoned nests system wide. As a result of limited foraging habitat, this nesting season is one of the lowest nesting efforts observed in the Everglades in the last 30 years. Taylor Slough stages decreased last week but remain above the recent average for this time of year by half an inch. Average Florida Bay salinity increased last week, and all three regions remain within their respective interquartile range.

## Supporting Information

### Kissimmee Basin

#### *Upper Kissimmee*

On June 14, 2026, mean daily lake stages were 53.9 feet NAVD88 (1.6 feet below schedule) in East Lake Toho, 51.1 feet NAVD88 (1.4 feet below schedule) in Lake Toho, and 47.8 feet NAVD88 (2.5 feet below the Increment 1 Temporary Deviation schedule) in Lakes Kissimmee-Cypress-Hatchineha (KCH) (**Table KB-1, Figures KB-1-3**).

#### *Lower Kissimmee*

For the week ending June 14, 2026, mean weekly discharge was 300 cfs at S-65 and 240 cfs at S-65A. Mean weekly discharge from the Kissimmee River was 280 cfs at S-65D and 220 cfs at S-65E (**Table KB-2**). Mean weekly headwater stages were 45.3 feet NAVD88 at S-65A and 27.8 feet NAVD88 at S-65D. Mean weekly river channel stage decreased by 0.3 feet to 30.3 feet NAVD88 (**Figure KB-4**). Mean weekly water depth on the Kissimmee River floodplain decreased by 0.01 feet to 0.32 feet (**Table KB-2, Figure KB-5**). The weekly average concentration of dissolved oxygen in the Kissimmee River decreased from 7.5 mg/L the previous week to 7.4 mg/L (**Table KB-2, Figure KB-6**).

#### *Water Management Recommendations*

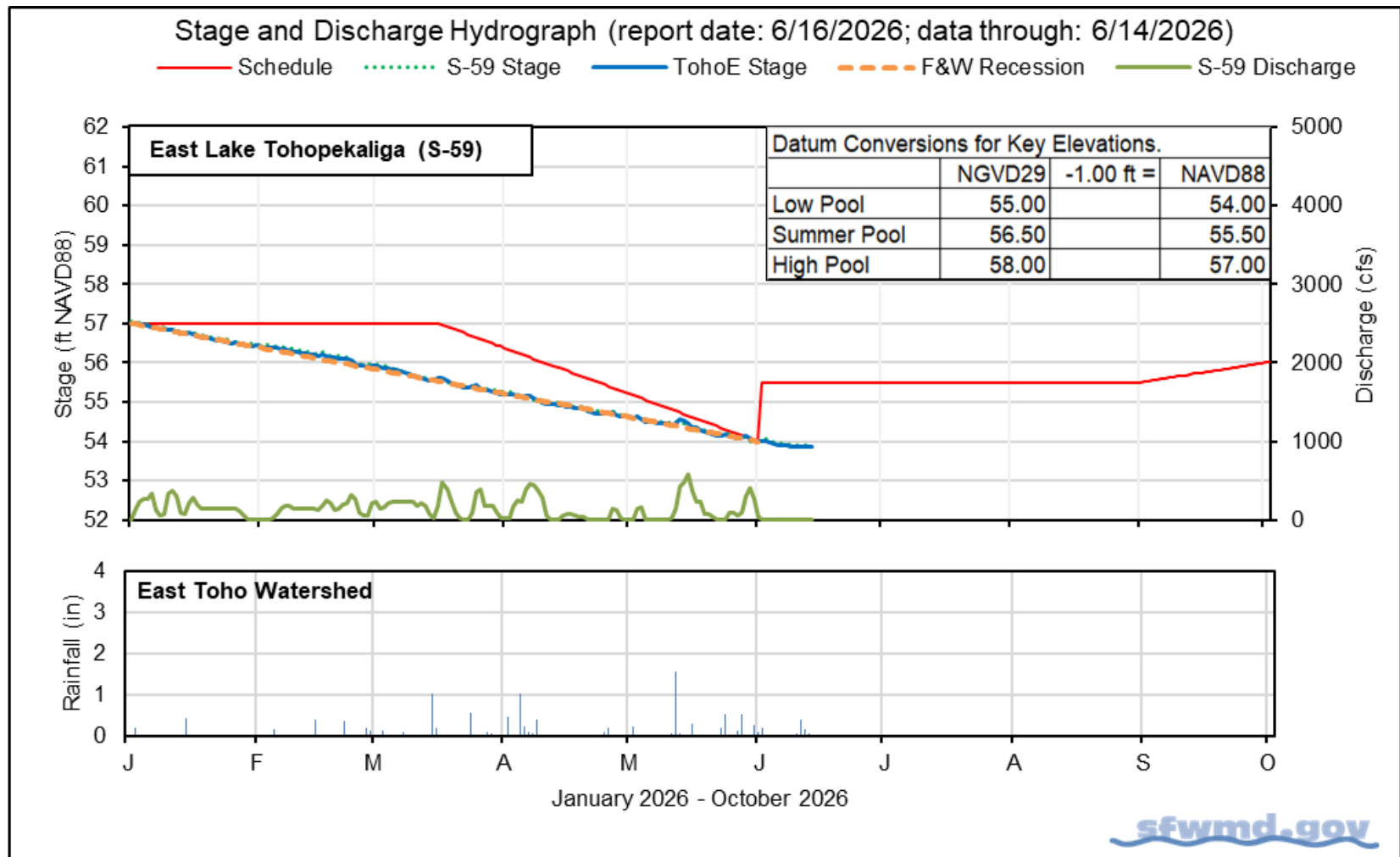
Allow stage in East Lake Toho and Lake Toho to rise with rainfall and to, the extent possible, limit the ascension rate to no more than 0.5 feet/14 days. In KCH, follow the Headwaters Revitalization Schedule (HRS) Increment 1 Temporary Deviation Discharge Plan for S-65/S-65A (**Figure KB-7**). With KCH stage in Zone B4, target flows of 300 cfs; if stage increases into Zone B3, target flows between 300 and 1,400 cfs at S-65A using the Increment 1 Interpolation Tool to determine discharge relative to stage in KCH. If stage declines into Zone B5, target flows of 150 cfs.

**Table KB-1.** Average discharge for the preceding seven days, Sunday's average daily stage and Sunday's average daily departure from Kissimmee Chain of Lakes (KCOL) flood regulation lines or temporary schedules. All data are provisional.

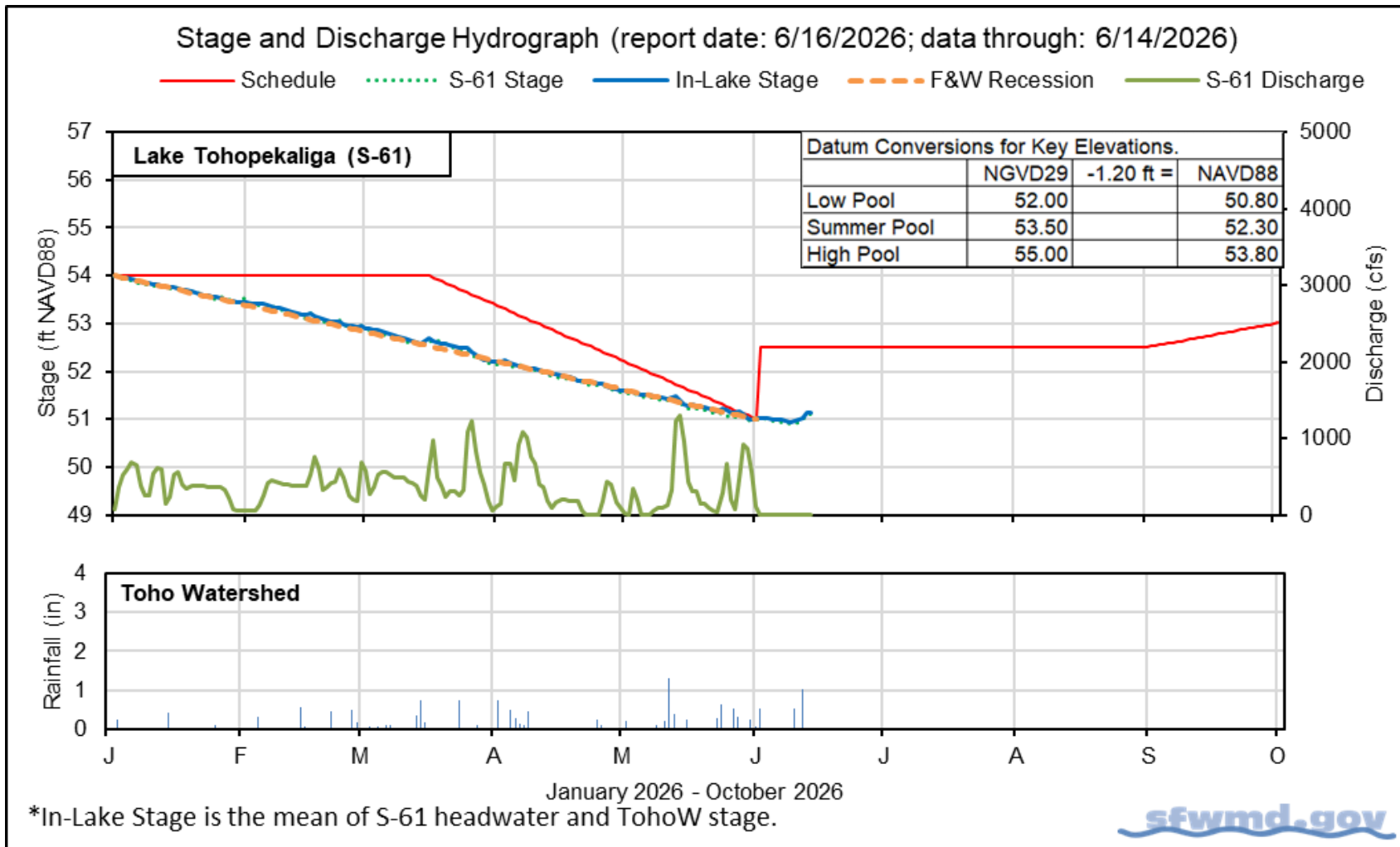
Water Body	Structure	Stage Monitoring Site	Weekly (7-Day) Average Discharge (cfs)	Sunday Lake Stage (feet NAVD88) <sup>a</sup>	Schedule Type <sup>b</sup>	Sunday Schedule Stage (feet NAVD88)	Sunday Departure from Regulation (feet)	
							6/14/26	6/7/26
Lakes Hart and Mary Jane	S-62	LKMJ	0	58.4	R	58.9	-0.5	-0.5
Lakes Myrtle, Preston and Joel	S-57	S-57	0	58.7	R	59.9	-1.2	-1.2
Alligator Chain	S-60	ALLI	0	60.7	R	62.1	-1.4	-1.3
Lake Gentry	S-63	LKGT	0	58.5	R	59.9	-1.4	-1.5
East Lake Toho	S-59	TOHOE	0	53.9	R	55.5	-1.6	-1.6
Lake Toho	S-61	TOHOW S-61	0	51.1	R	52.5	-1.4	-1.5
Lakes Kissimmee, Cypress and Hatchineha	S-65	KUB011 LKIS5B	300	47.8	T	50.3	-2.5	-2.4

a. Names of in-lake monitoring sites and structures used to determine lake stage. If more than one site is listed, an average is reported.

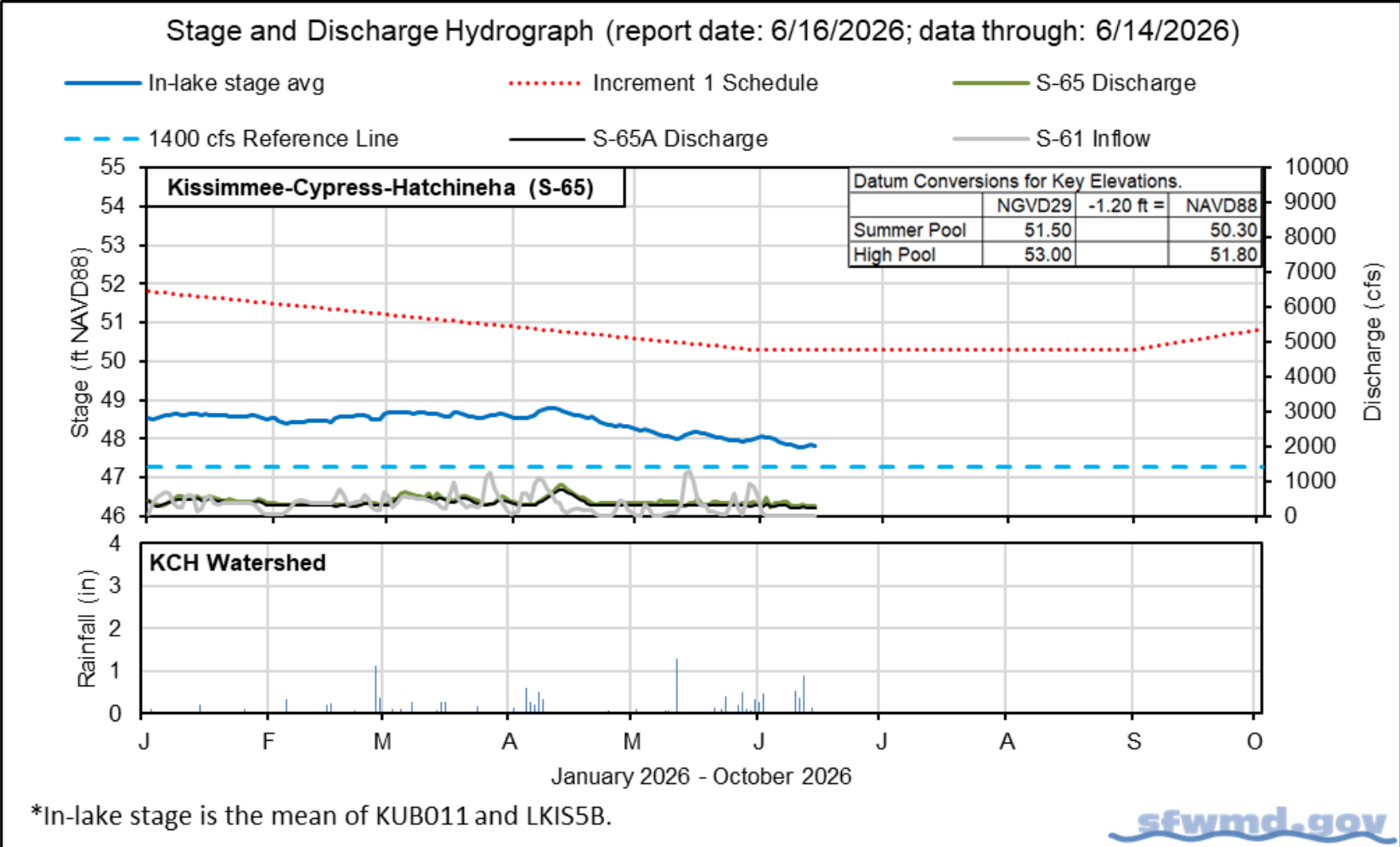
b. A: projected recession line; R: USACE regulation schedule; S: temporary recession target line; T: temporary schedule; NA: not applicable or not available.



**Figure KB-1.** East Lake Toho regulation schedule, stage, discharge, and rainfall.



**Figure KB-2.** Lake Toho regulation schedule, stage, discharge, and rainfall.



**Figure KB-3.** Lakes Kissimmee, Cypress and Hatchineha regulation schedule, stage, discharge, and rainfall.

**Table KB-2.** One- and seven-day average discharge and stage at Lower Kissimmee basin structures, river channel dissolved oxygen concentrations and water depths in the Phase I area floodplain. All data are provisional.

Metric	Location	Sunday Daily Average	Weekly Average for Previous Seven Day Periods			
		6/14/26	6/14/26	6/7/26	5/31/26	5/24/26
Discharge	S-65	300	300	380	360	380
Discharge	S-65A <sup>a</sup>	250	240	300	300	320
Headwater Stage (feet NAVD88)	S-65A	45.2	45.3	45.2	45.2	45.2
Discharge	S-65D <sup>b</sup>	260	280	310	340	350
Headwater Stage (feet NAVD88)	S-65D <sup>c</sup>	24.4	27.8	28.1	28.2	28.2
Discharge (cfs)	S-65E <sup>d</sup>	220	220	200	220	210
Discharge (cfs)	S-67	0	0	0	0	0
Dissolved Oxygen (mg/L) <sup>e</sup>	Phase I, II/III river channel	7.1	7.4	7.5	7.1	7.5
River channel mean stage (feet NAVD88) <sup>f</sup>	Phase I river channel	30.2	30.3	30.6	30.7	30.8
Mean depth (feet) <sup>g</sup>	Phase I & II/III floodplain	0.32	0.32	0.33	0.33	0.33

a. Combined discharge from main and auxiliary structures.

b. Combined discharge from S-65D, S-65DX1, and S-65DX2.

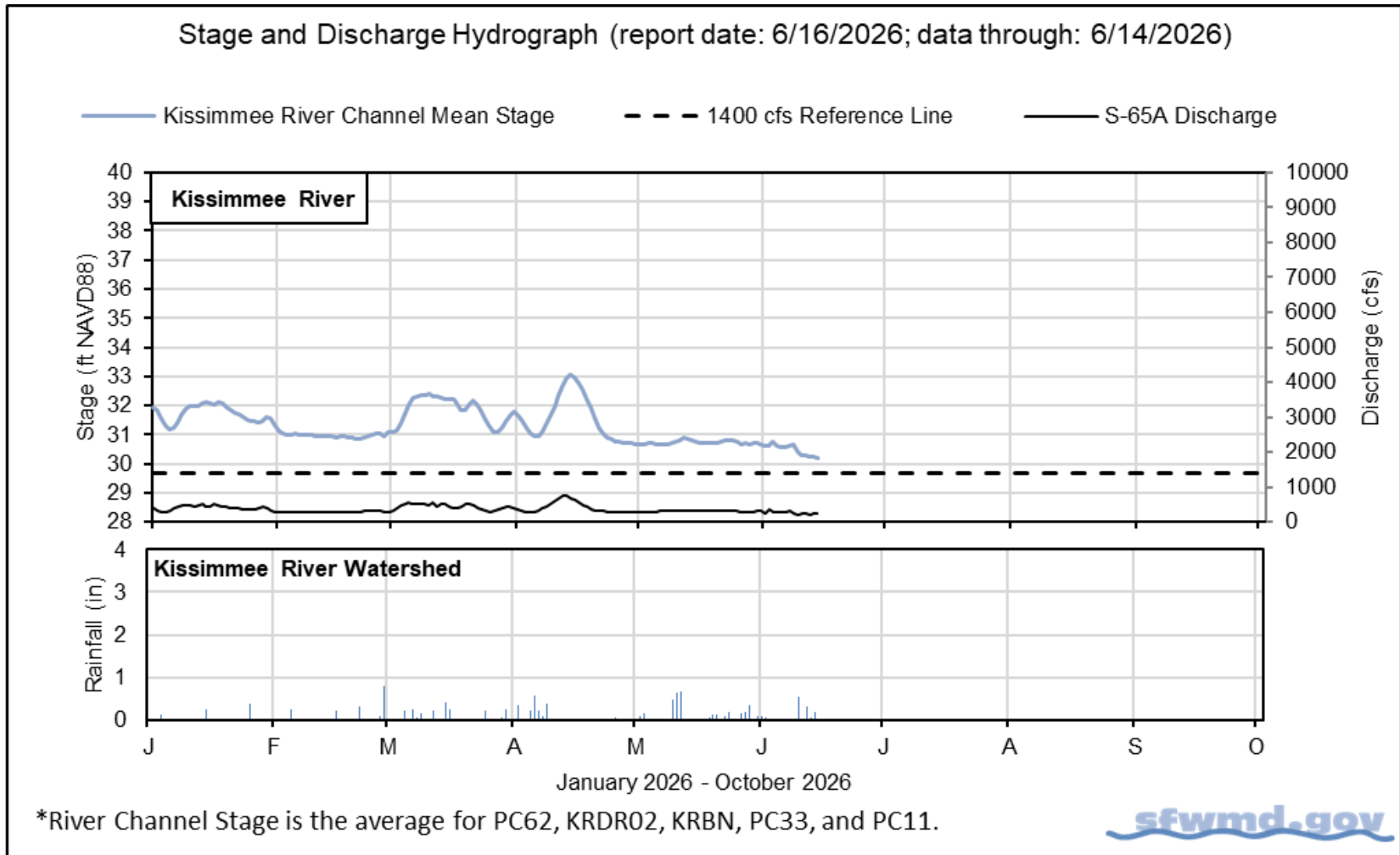
c. Average stage from S-65D and S-65DX1.

d. Combined discharge from S-65E and S-65EX1.

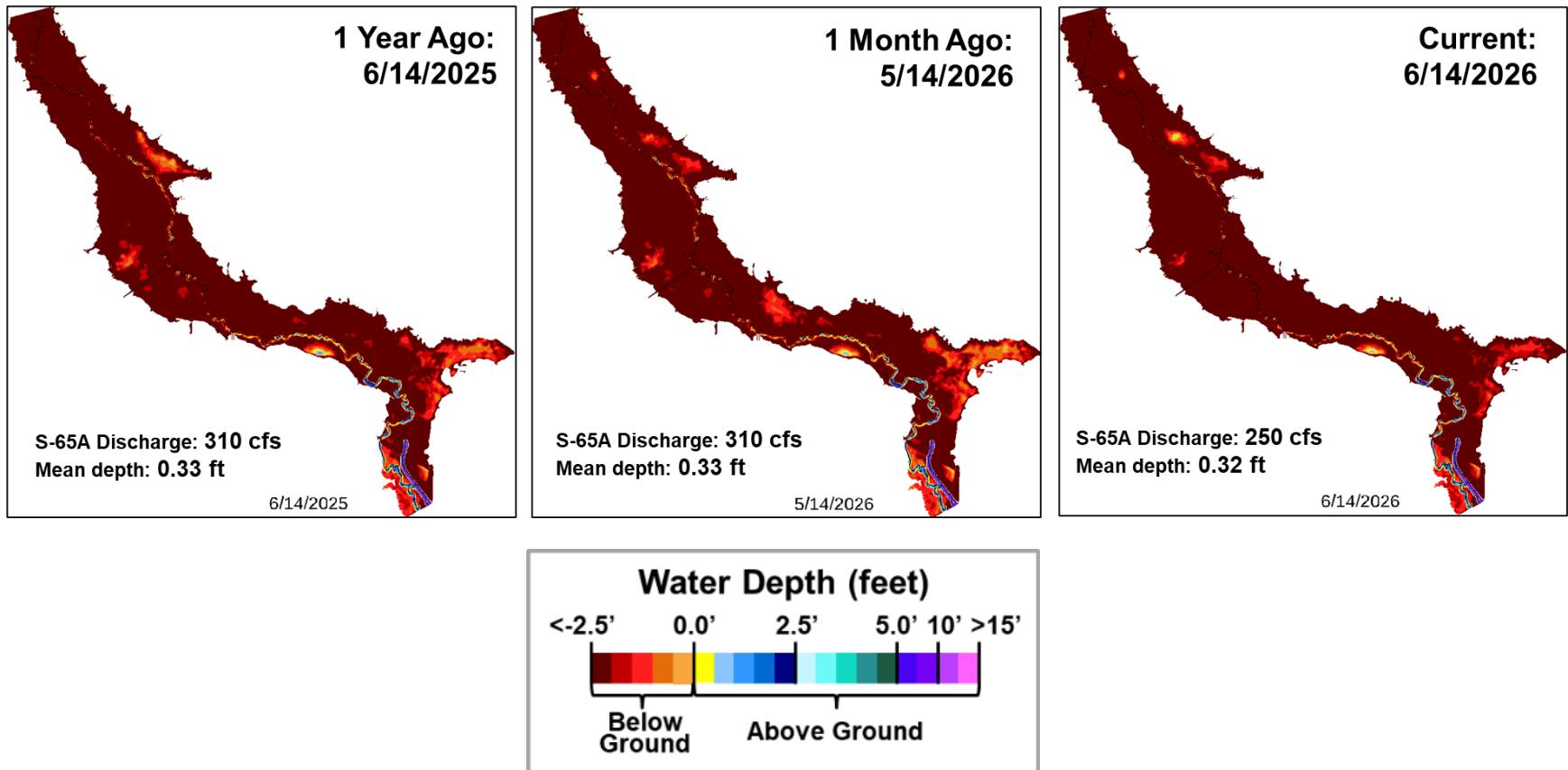
e. Dissolved oxygen is the average of values from sondes KRBN, PC62, PC33, PD62R, and PD42R.

f. Mean of five river channel stations (PC62, KRDR02, KRBN, PC33, PC11) in the Phase I area.

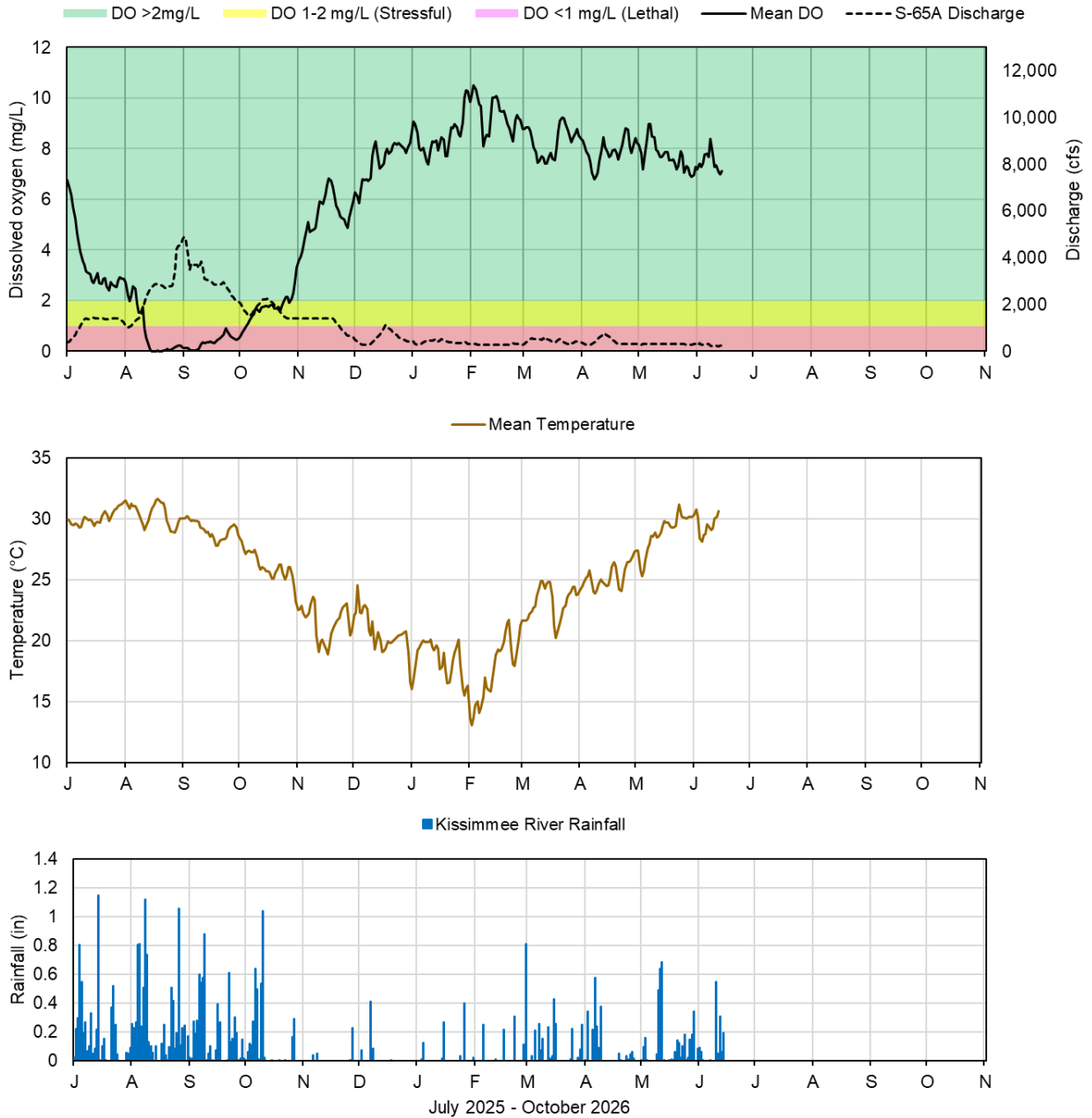
g. One-day spatial average obtained from the South Florida Water Depth Assessment Tool (SFWDAT).



**Figure KB-4.** Kissimmee River stage, discharge, and rainfall.



**Figure KB-5.** Phase I-II-III area Kissimmee River floodplain water depths (from left to right) one year ago, one month ago, and current.



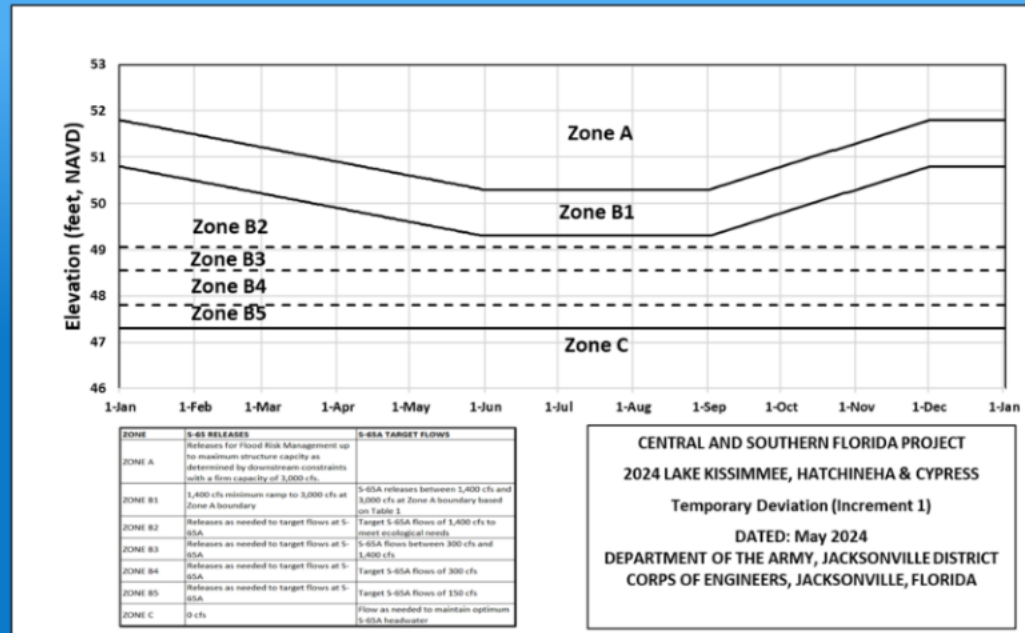
Report Date: 6/16/2026; data are through: 6/14/2026



**Figure KB-6.** Kissimmee River channel mean daily dissolved oxygen concentration (mg/L), S-65A discharge (cfs), temperature (°C) and rainfall (inches). Dissolved oxygen (DO) and temperature are mean daily values averaged for PC62, KRDR02, KRBN, PC33, PC11, PD62R, and PD42R with an average of five stations reporting this week. Rainfall values are daily totals for Kissimmee River (Pool BCD) AHED watershed.

# HRS Increment 1 Temporary Deviation Discharge Plan for S-65/S-65A

Discharge Guidance for Increment 1 Temporary Deviation Discharge Plan		
ZONE	S-65 RELEASES	S-65A TARGET FLOWS
ZONE A	Releases for Flood Risk Management up to maximum structure capacity as determined by downstream constraints with a firm capacity of 3,000 cfs.	
ZONE B1	1,400 cfs minimum ramp to 3,000 cfs at Zone A boundary	S-65A releases between 1,400 cfs and 3,000 cfs at Zone A boundary based on Table 1
ZONE B2	Releases as needed to target flows at S-65A	Target S-65A flows of 1,400 cfs to meet ecological needs
ZONE B3	Releases as needed to target flows at S-65A	S-65A flows between 300 cfs and 1,400 cfs
ZONE B4	Releases as needed to target flows at S-65A	Target S-65A flows of 300 cfs
ZONE B5	Releases as needed to target flows at S-65A	Target S-65A flows of 150 cfs
ZONE C	0 cfs	Flow as needed to maintain optimum S-65A headwater



**Table KB-3. Maximum Rate of Change Limits for S-65A**

MAXIMUM Release Rate of Change Limits for S-65A. In general recommended rates of change will be slower than shown in this table.

Q (cfs)	Maximum rate of INCREASE (cfs/day)	Maximum rate of DECREASE (cfs/day)
0-300	50	-50
301-650	75	-75
651-1400	150	-150
1401-3000	300	-600
>3000	1000	-2000

**Other Considerations**

- When possible, limit lake ascension rate in the Jun 1 - Aug 15 window to 0.25 ft per 7 days in Lakes Kissimmee, Cypress, Hatchineha (S-65), East Toho (S-59) and Toho (S-61).
- If outlook is for extreme dry conditions meet with KB staff to discuss modifications to this plan.

**Figure KB-7.** Headwaters Revitalization Schedule (HRS) Increment 1 Temporary Deviation Discharge Plan for S-65/S-65A.

## Lake Okeechobee

Lake Okeechobee stage was 9.73 feet NAVD88 (11.04 feet NGVD29) on June 14, 2026, which was 0.16 feet lower than the previous week and 0.35 feet lower than a month ago (**Figure LO-1**). Lake stage is in Zone D of the regulation schedule, is 0.27 feet above the water shortage management band (**Figure LO-2**), and 0.46 feet below the ecological envelope (**Figure LO-3**). According to NEXRAD, 0.90 inches (approximately 33,700 acre-feet) of rain fell directly over the lake during the previous week, and 1.39 inches (approximately 39,700 acre-feet) were lost to evapotranspiration.

Average daily inflows (excluding rainfall) increased from 200 cfs the previous week to 250 cfs. The most notable inflow came from the Kissimmee River (220 cfs via S-65E(X1)). Average daily outflows (excluding evapotranspiration) increased from 450 cfs the previous week to 1,800 cfs. The largest release was to the south through the S-351 structure (720 cfs). **Figures LO-4 and LO-5** show the combined average daily inflows and outflows for the Lake over the past eight weeks, and the average inflows and outflows last week, respectively.

In the most recent non-obscured satellite image from June 14, 2026, NOAA's Harmful Algal Bloom Monitoring System suggests moderate to high cyanobacteria potential in Fisheating Bay and along much of the Indian Prairie, with some moderate potential in some central and northern areas (**Figure LO-6**).

The ninth wading bird survey of the 2026 season occurred on June 4th. Approximately 4,680 birds across 8 flocks were seen actively foraging around the Lake (**Figure LO-7**). The decline in number of birds is consistent with seasonal declines as the breeding season winds down, and the total was above the 10-year average.

The routine water quality and phytoplankton monitoring sampling trips are now on the bloom season (May-Oct) twice per month sampling schedule. Provisional phytoplankton results from the May 26-27 sampling event showed 2 of the 25 phytoplankton samples collected had detectable levels of cyanotoxins (0.1 µg/L cylindrospermopsin), and 3 of the samples were dominated or co-dominated by *Microcystis* (**Figure LO-8**). Two of the 25 water quality samples had chlorophyll *a* values greater than 40 µg/L, indicating bloom level concentrations, while 6 samples had values between 20 and 40 µg/L (**Figure LO-8**). Provisional phytoplankton results from the June 8-10 sampling event showed 5 of the 27 phytoplankton samples collected had detectable levels of cyanotoxins; 3 had less than 0.2 µg/L cylindrospermopsin, and 2 had 0.6 and 1.7 µg/L microcystins (**Figure LO-9**). Thirteen of the samples were dominated or co-dominated by *Microcystis* (**Figure LO-9**).

Note: All data presented in this report are provisional and are subject to change.

1 Month Ago:  
05/14/2026

Current:  
06/14/2026

10.12 ft  
NAVD88

9.73 ft  
NAVD88

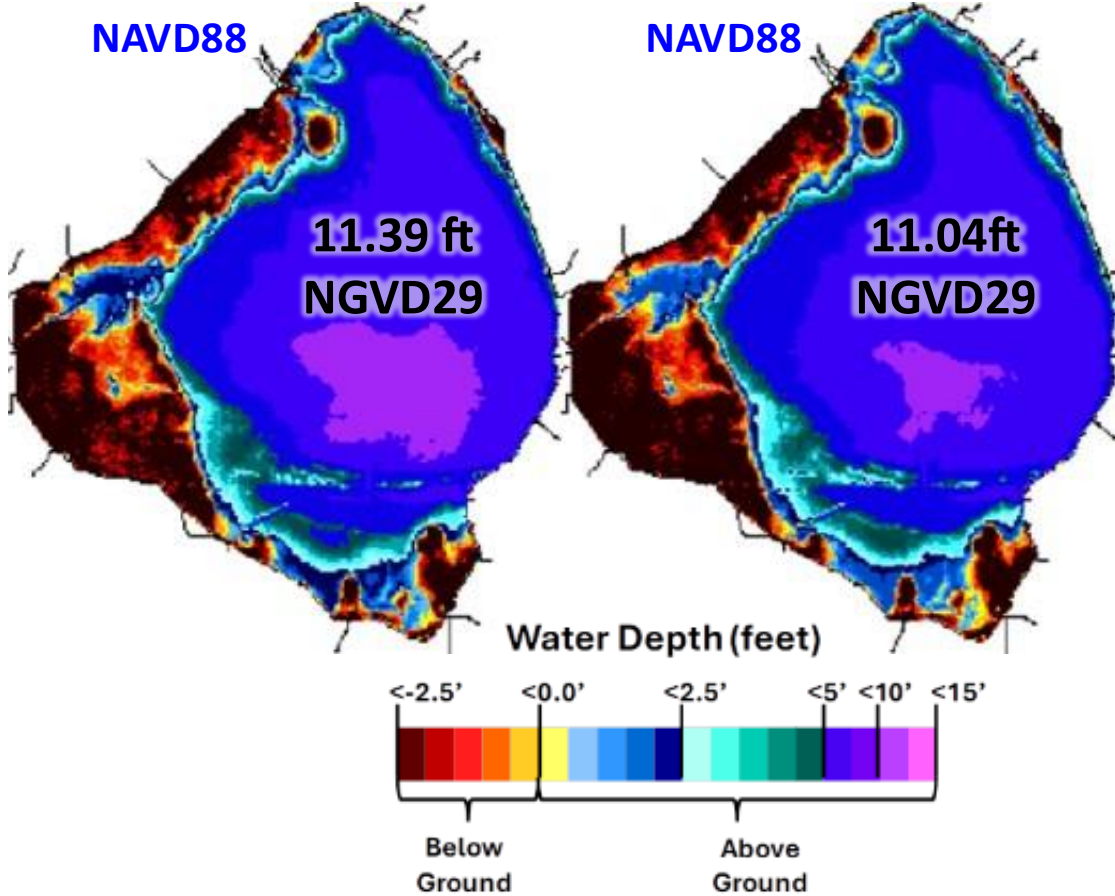
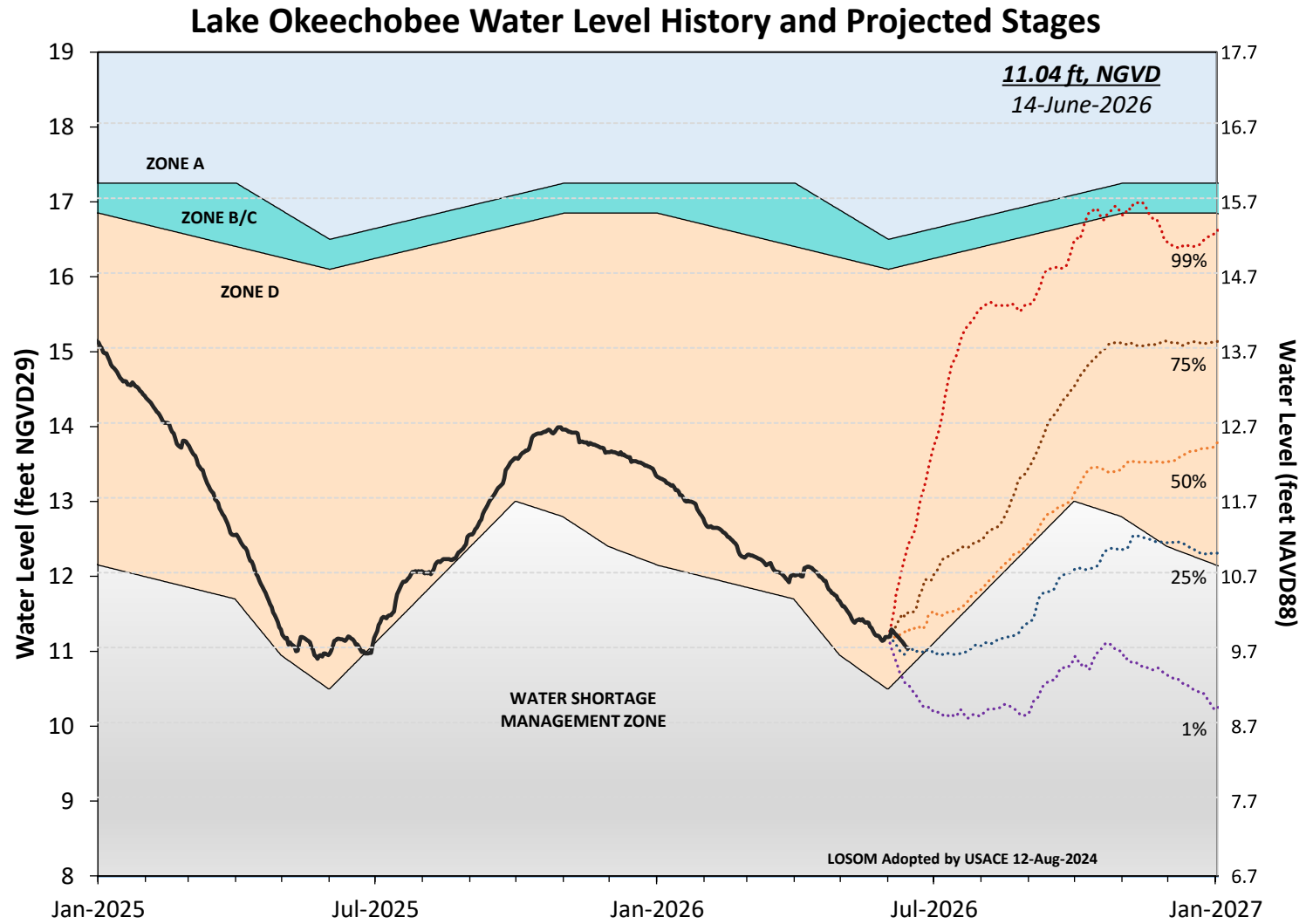


Figure LO-1. Lake Okeechobee water depth estimates based on South Florida Water Depth Assessment Tool (SFWDAT).



**Figure LO-2.** Recent Lake Okeechobee stages with projected stages based on a conditional position analysis. Note: stages are in NGVD29, approximate NAVD88 values are shown for reference.

# Lake Okeechobee Stage vs Ecological Envelope

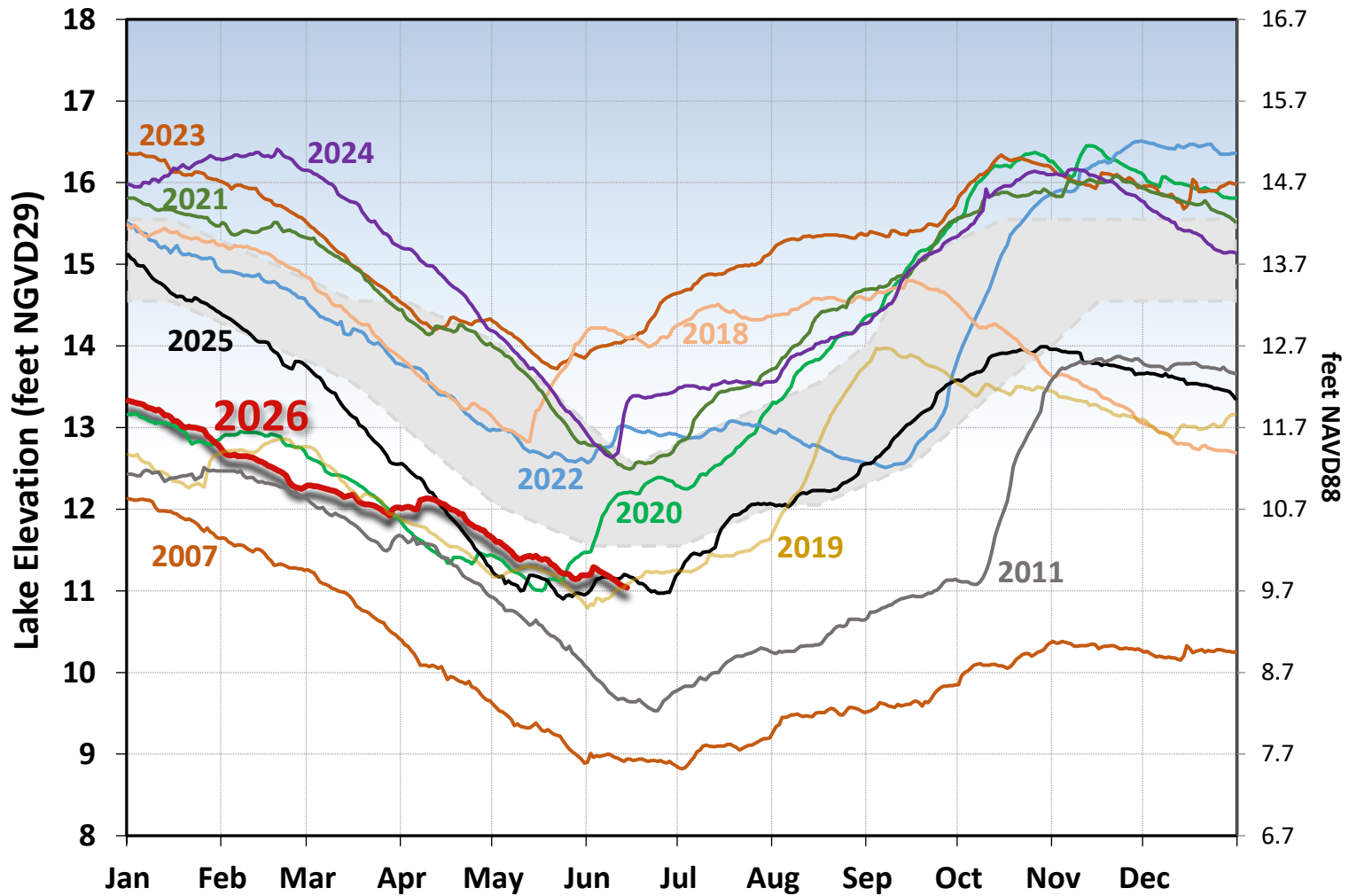
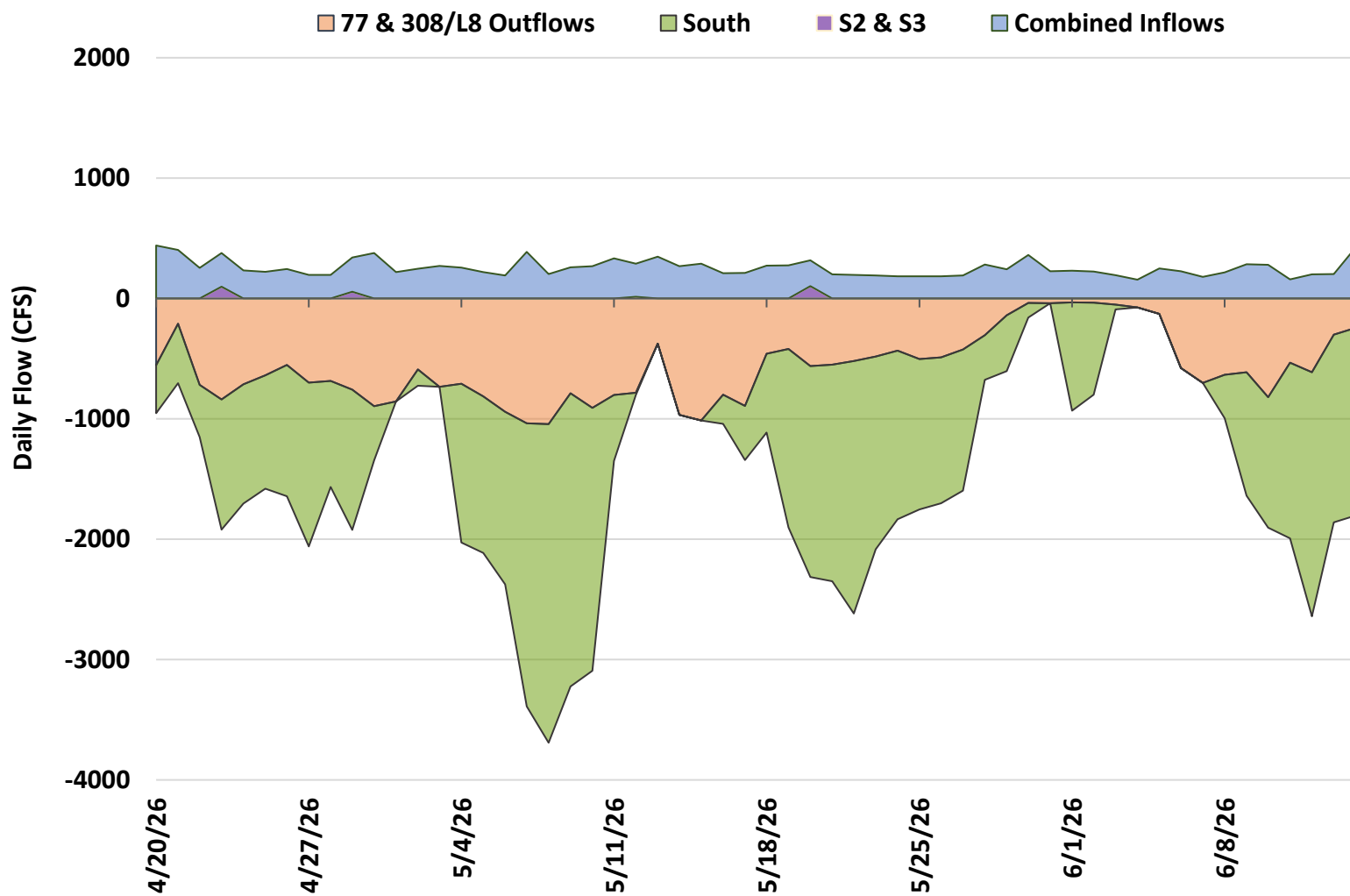
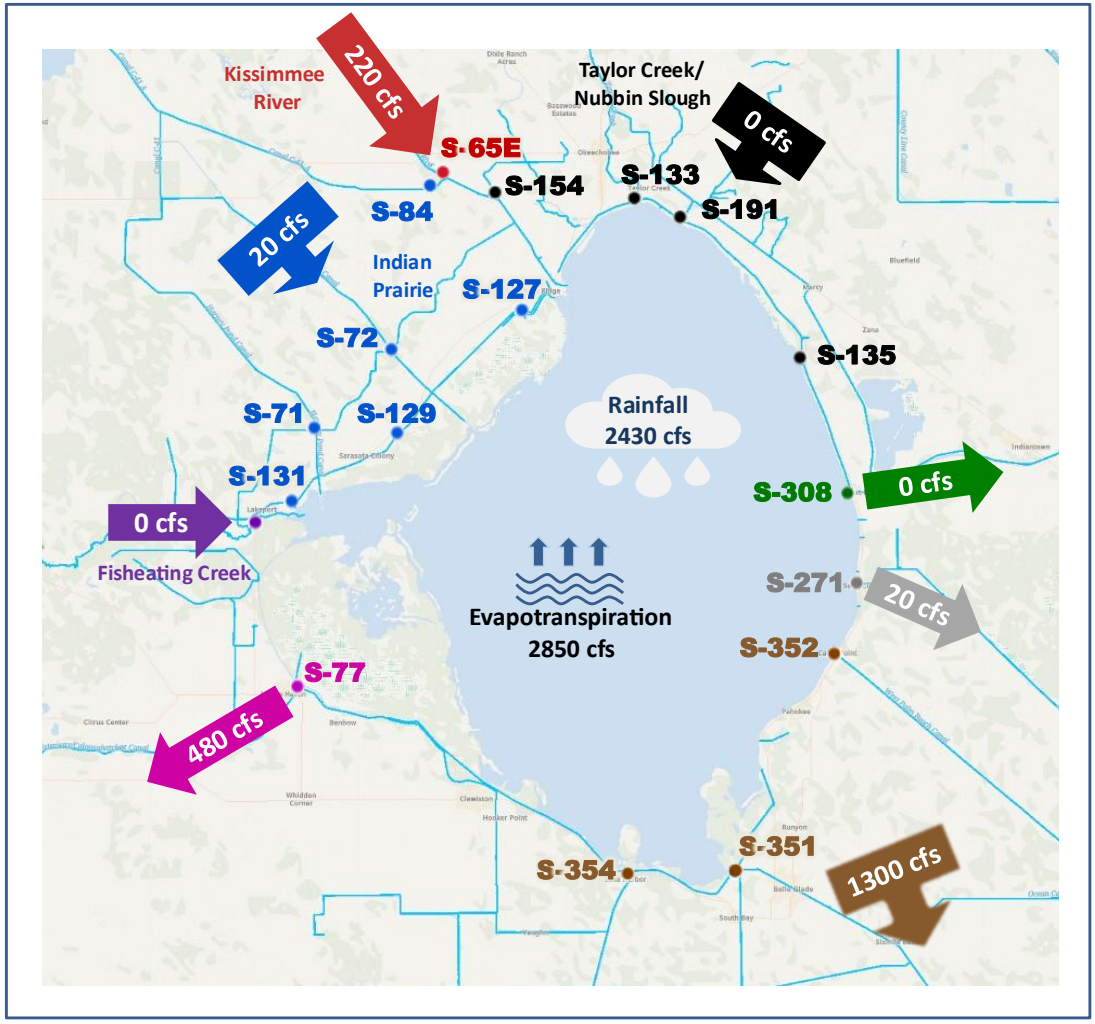


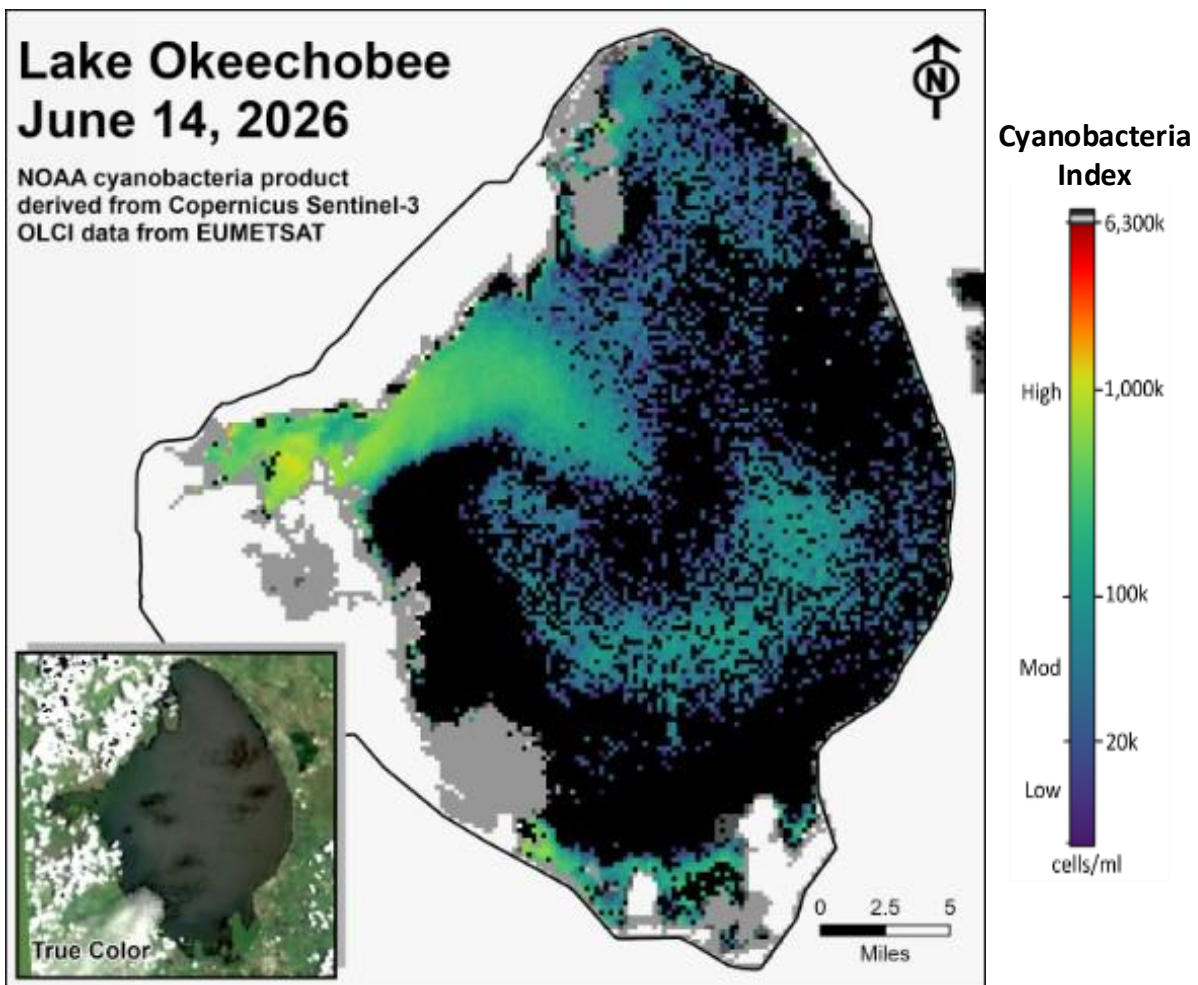
Figure LO-3. The current and select prior year's annual lake stage hydrographs in comparison to the Lake Okeechobee ecological envelope (light grey).



**Figure LO-4.** Major inflows (orange) to and outflows east and west (blue) from Lake Okeechobee. Outflows south are shown in green. Flows into Lake Okeechobee from the L-8 canal through S-271 (formerly Culvert 10A) or from the C-44 canal through the S-308 are included as inflows. Conversely, flows from Lake Okeechobee into the L-8 or C-44 canals are included with outflows. Inflows are shown as positive values; outflows are negative. Outflows through the S-77 (Caloosahatchee) and S-308 (C-44 Canal) structures are based on downstream gauges to include flows to lock openings for navigation.

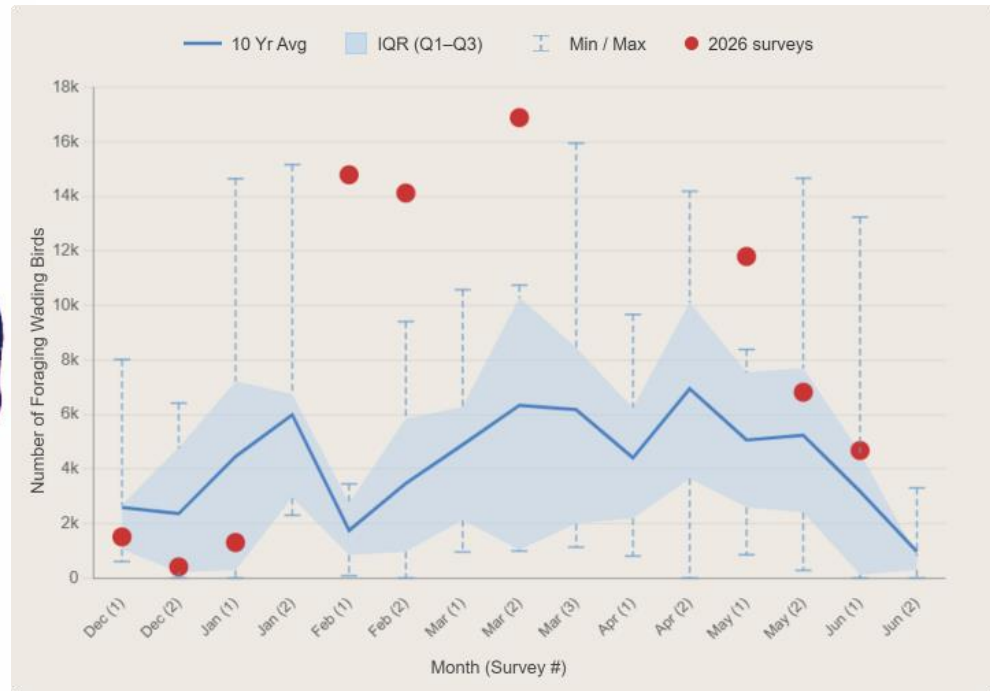
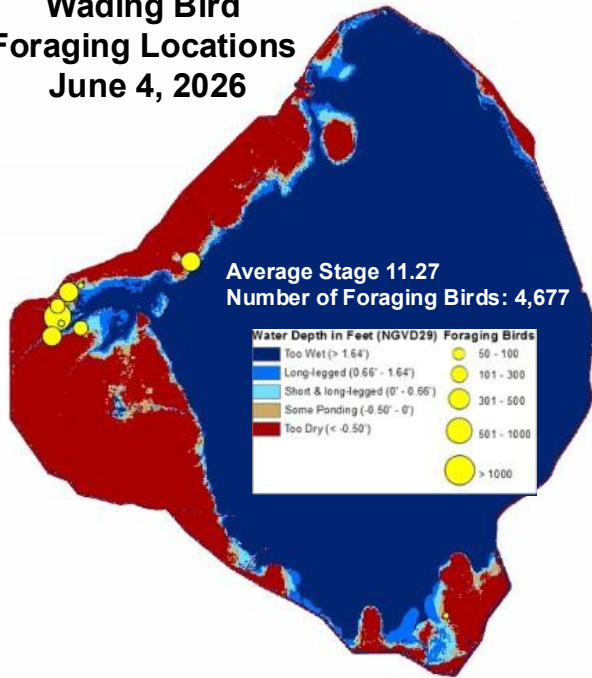


**Figure LO-5.** Inflows into Lake Okeechobee from Indian Prairie basins, Taylor Creek/Nubbin Slough, Kissimmee River and Fisheating Creek (currently no flow data available for FECR), and outflows to the west via S-77, to the east via S-308, to the south via S-351, S-352, S-354, and to southeast via S-271 (formerly Culvert 10A) for the week of June 8 - 14, 2026.



**Figure LO-6.** Cyanobacteria bloom index level on Lake Okeechobee, based on NOAA’s harmful algal bloom monitoring system. Gray color indicates cloud cover. \*Provisional NOAA image, subject to change\*.

**Wading Bird  
Foraging Locations  
June 4, 2026**



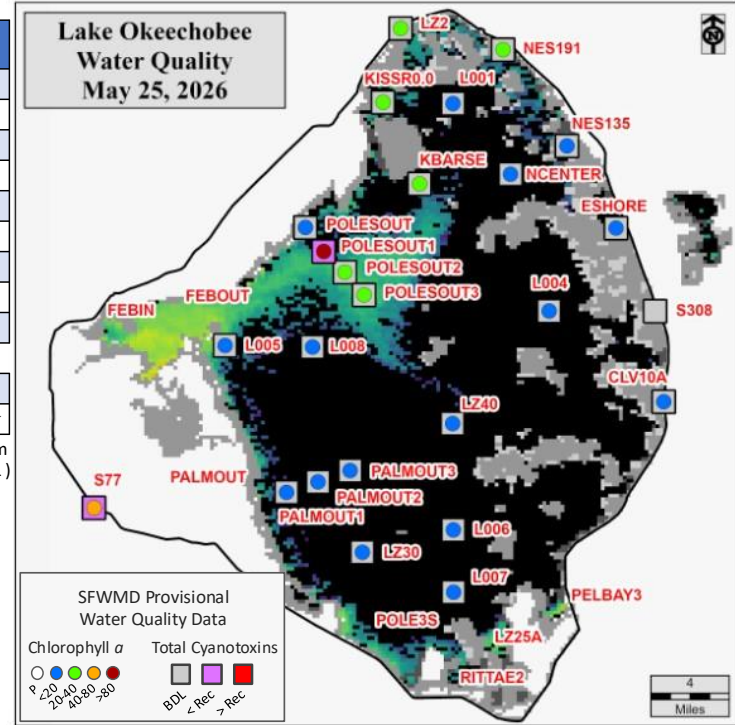
**Figure LO-7.** Results from the wading bird survey flight conducted on June 4, 2026. Map graphic indicates location of the 8 flocks and approximate abundance of actively foraging wading birds on Lake Okeechobee. Graph compares the current seasons wading bird counts (red dots) to the mean, min, max, and interquartile ranges from the preceding 10 years of surveys.

Collection Date: May 26-27, 2026

Station	CHLa (ug/L)	TOXIN (ug/L)	TAXA	Station	CHLa (ug/L)	TOXIN (ug/L)	TAXA
FEBIN				L001	15.1	BDL	<i>mixed</i>
FEBOUT				L004	12.3	BDL	<i>mixed</i>
KISSR0.0	36.1	BDL	<i>mixed</i>	L006	7.8	BDL	<i>mixed</i>
L005	18.6	BDL	<i>mixed</i>	L007	6.6	BDL	<i>mixed</i>
LZ2	28.0	BDL	<i>Micro/Aphan</i>	L008	10.0	BDL	<i>mixed</i>
KBARSE	30.9	BDL	<i>mixed</i>	LZ30	5.6	BDL	<i>mixed</i>
RITTAE2				LZ40	19.3	BDL	<i>Microcys</i>
PELBAY3				CLV10A	12.0	BDL	<i>mixed</i>
POLE3S				NCENTER	14.7	BDL	<i>mixed</i>
LZ25A							
PALMOUT				S308C		BDL	<i>mixed</i>
PALMOUT1	10.7	BDL	<i>mixed</i>	S77	78.0	0.1	<i>Micro/Plank</i>
PALMOUT2	10.0	BDL	<i>mixed</i>				
PALMOUT3	11.8	BDL	<i>mixed</i>				
POLESOUT	10.5	BDL	<i>Planktol</i>				
POLESOUT1	95.9	0.1	<i>Raphi/Plank</i>				
POLESOUT2	30.4	BDL	<i>mixed</i>				
POLESOUT3	27.5	BDL	<i>mixed</i>				
EASTSHORE	11.8	BDL	<i>mixed</i>				
NES135	19.8	BDL	<i>mixed</i>				
NES191	20.6	BDL	<i>mixed</i>				

Toxins include cylindrospermopsin and/omicrocystins

- > SFWMD considers >40µg/L Chlorophyll a an algal bloom
- > BDL – Below Detectable Limit of 0.2 µg/L (Cyl = 0.1 µg/L)
- > Mixed – No dominant taxa
- > F – Flagged Sample
- > Blank – Not sampled
- > Station bold font – crew observed possible BGA
- > Chlorophyll a (CHLa) analyzed by SFWMD
- > Toxin & Taxa analyzed by FDEP:
- Microcys* = *Microcystis*; *Raphi* = *Raphidiopsis*;
- Planktol* = *Planktolyngbya*; *Dolicho* = *Dolichospermum*;
- Pseud* = *Pseudanabaena*; *Dinop* = *Dinophyceae*



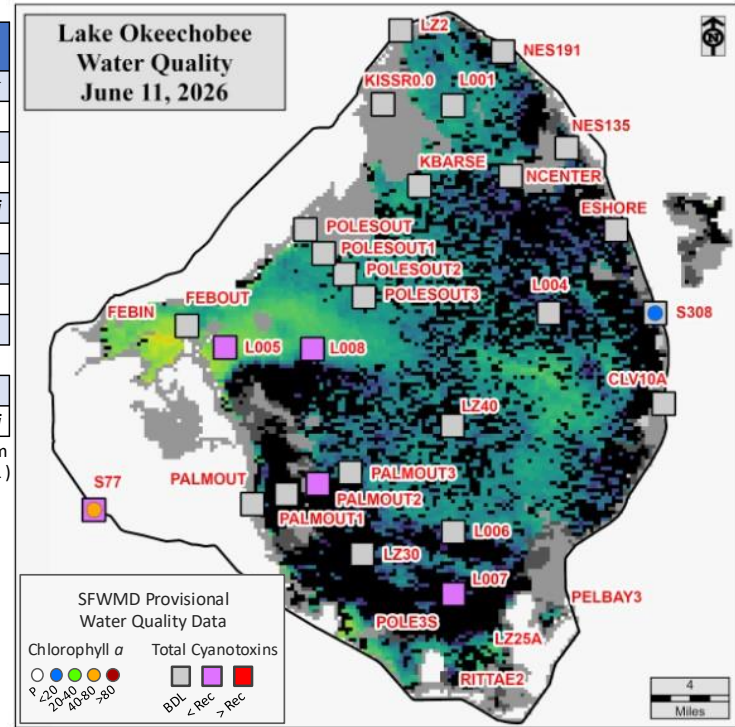
**Figure LO-8.** Dominant taxa, cyanotoxins (µg/L) and chlorophyll a (µg/L) concentration data from May 26-27, 2026. Sampling locations, chlorophyll a, and total toxin concentrations are overlaid on the May 25, 2026, image from NOAA’s harmful algal bloom monitoring system. Gray color indicates cloud cover.

Collection Date: June 8-10, 2026

Station	CHL <sub>a</sub> (ug/L)	TOXIN (ug/L)	TAXA	Station	CHL <sub>a</sub> (ug/L)	TOXIN (ug/L)	TAXA
FEBIN				L001		BDL	<i>Micro/Plank</i>
FEBOUT		BDL	<i>Raphi/Plank</i>	L004		BDL	<i>Microcys</i>
KISSR0.0		BDL	<i>Micro/Aphan</i>	L006		BDL	<i>Microcys</i>
L005		0.1	<i>Raphidio</i>	L007		0.6	<i>Microcys</i>
LZ2		BDL	<i>mixed</i>	L008		0.1	<i>Micro/Raphi</i>
KBARSE		BDL	<i>Microcys</i>	LZ30		BDL	<i>mixed</i>
RITTAE2				LZ40		BDL	<i>mixed</i>
PELBAY3				CLV10A		BDL	<i>mixed</i>
POLE3S				NCENTER		BDL	<i>mixed</i>
LZ25A							
PALMOUT		BDL	<i>mixed</i>	S308C	8.4	BDL	<i>mixed</i>
PALMOUT1		BDL	<i>mixed</i>	S77	77.3	0.1	<i>Micro/Raphi</i>
PALMOUT2		1.7	<i>Microcys</i>				
PALMOUT3		BDL	<i>mixed</i>				
POLESOUT		BDL	<i>mixed</i>				
POLESOUT1		BDL	<i>Microcys</i>				
POLESOUT2		BDL	<i>Microcys</i>				
POLESOUT3		BDL	<i>Microcys</i>				
EASTSHORE		BDL	<i>mixed</i>				
NES135		BDL	<i>Microcys</i>				
NES191		BDL	<i>mixed</i>				

> SFWMD considers >40µg/L Chlorophyll<sub>a</sub> an algal bloom  
 > BDL – Below Detectable Limit of 0.2 µg/L (Cyl = 0.1 µg/L)  
 > ND – No Dominant taxa  
 > F – Flagged Sample  
 > Blank – Not sampled  
 > Station bold font – crew observed possible BGA  
 > Chlorophyll *a* (CHL<sub>a</sub>) analyzed by SFWMD  
 > Toxin & Taxa analyzed by FDEP:  
*Microcys* = *Microcystis*; *Raphi* = *Raphidiopsis*;  
*Planktol* = *Planktolyngbya*; *Dolicho* = *Dolichospermum*;  
*Pseud* = *Pseudanabaena*; *Dinop* = *Dinophyceae*

Toxins include cylindrospermopsin and/or microcystins



**Figure LO-9.** Dominant taxa, cyanotoxins (µg/L) and chlorophyll *a* (µg/L) concentration data from June 8-10, 2026. Sampling locations, chlorophyll *a*, and total toxin concentrations are overlaid on the June 11, 2026, image from NOAA’s harmful algal bloom monitoring system. Gray color indicates cloud cover.

## Estuaries

### *St. Lucie Estuary*

Over the past week, mean total inflow to the St. Lucie Estuary was 184 cfs (**Figures ES-1 and ES-2**), and the previous 30-day mean inflow was 232 cfs. For comparison, the historical provisional mean inflows from contributing areas are shown in **Figure ES-2**.

Over the past week, salinities decreased at HR1 and the A1A Bridge sites and increased at the US1 Bridge site (**Table ES-1 and Figure ES-3**). The seven-day moving average of the surface and bottom salinities at the US1 Bridge was 20.9. Salinity conditions in the middle estuary were estimated to be within the optimal range for adult eastern oysters (**Figure ES-4**). The mean larval oyster recruitment rate reported by the Fish and Wildlife Research Institute (FWRI) for May was 0.4 spat/shell at Rio, which is a decrease from the previous month (**Figure ES-5**).

### *Caloosahatchee River Estuary*

Over the past week, mean total inflow to the Caloosahatchee River Estuary was 490 cfs (**Figures ES-6 and ES-7**), and the previous 30-day mean inflow was 486 cfs. For comparison, the historical provisional mean inflows from the contributing areas are shown in **Figure ES-7**.

Over the past week, surface salinities decreased at Cape Coral and increased at the remaining sites in the estuary (**Table ES-2 and Figures ES-8 and ES-9**). The seven-day mean salinities (**Table ES-2**) were in the stressed range (10-15) for tape grass at S-79 and Val I-75, and in the damaging range (>15) at Ft. Myers. The seven-day mean salinity values were within the optimal range for adult eastern oysters at Cape Coral, and in the upper stressed range (>25) at Shell Point and Sanibel (**Figure ES-10**). The mean larval oyster recruitment rates reported by the FWRI in May were 1.9 spat/shell at Iona Cove and 5.6 spat/shell at Bird Island, which is an increase and a decrease from the previous month, respectively (**Figures ES-11 and ES-12**).

Surface salinity at Val I-75 was forecast for the next two weeks using an autoregression model (Qiu and Wan, 2013<sup>1</sup>) coupled with a linear reservoir model for the tidal basin. Model scenarios included pulse releases at S-79 ranging from 450 to 2,000 cfs, with estimated tidal basin inflows of 54 cfs. Model results from all scenarios predict daily salinity to be 10.4 or lower and the 30-day moving average surface salinity to be 9.7 or lower at Val I-75 at the end of the two-week period (**Table ES-3 and Figure ES-13**). Predicted salinities for the next two weeks remain within the optimal salinity range (0-10) for tape grass in the upper estuary if S-79 flows are above 450 cfs.

---

<sup>1</sup> Qui, C., and Y. Wan. 2013. Time series modeling and prediction of salinity in the Caloosahatchee River Estuary. *Water Resources Research* 49:5804-5816.

### **Red Tide**

The FWRI reported on June 12, 2026, that *Karenia brevis*, the Florida red tide dinoflagellate, was not observed at bloom concentrations in any samples collected within the District region.

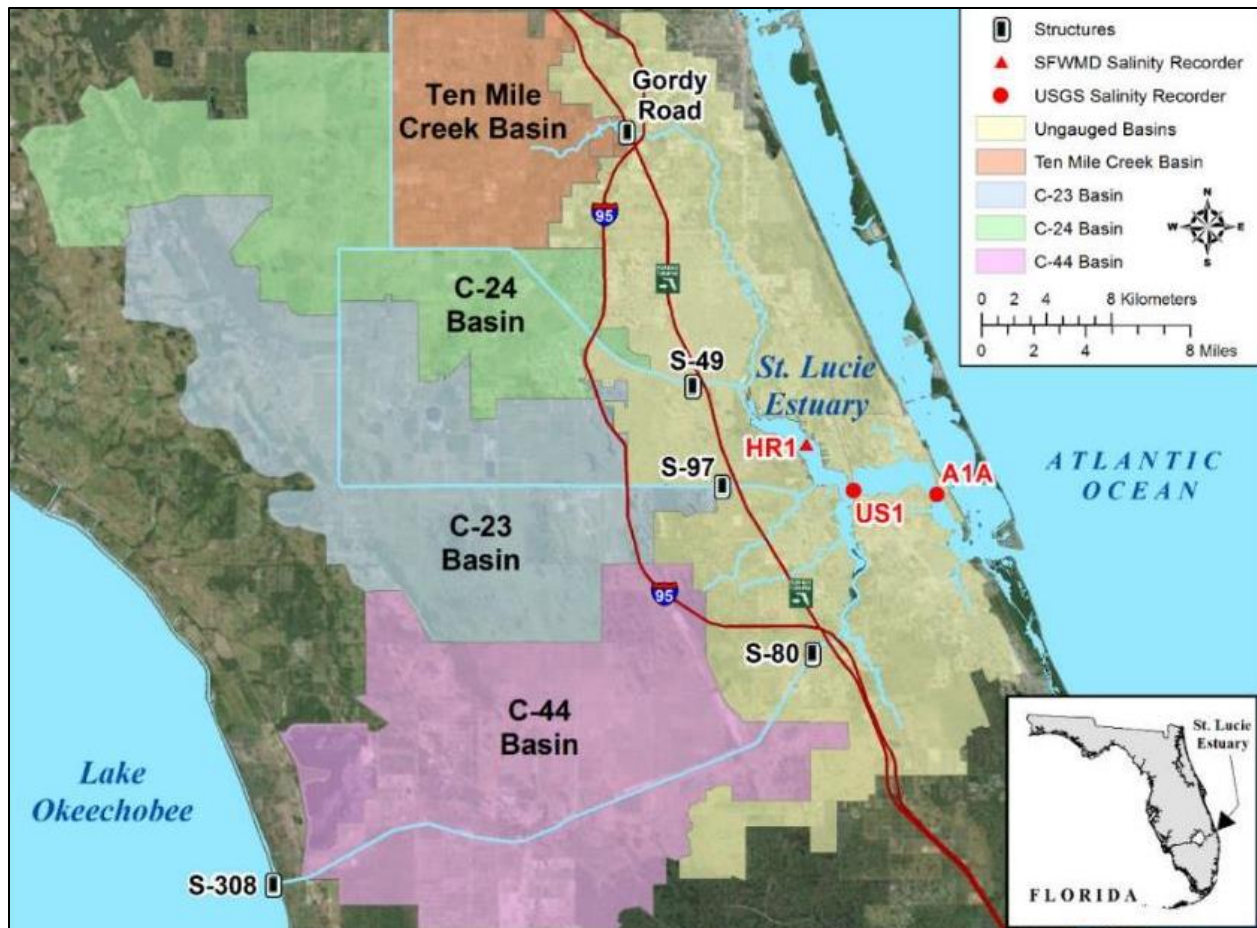
### **Water Management Recommendations**

Lake stage is in Zone D. Current climatological and hydrological conditions are normal. The LOSOM release guidance suggests up to 2,000 cfs release at S-79 to the Caloosahatchee River Estuary and no releases at S-80 to the St. Lucie Estuary.

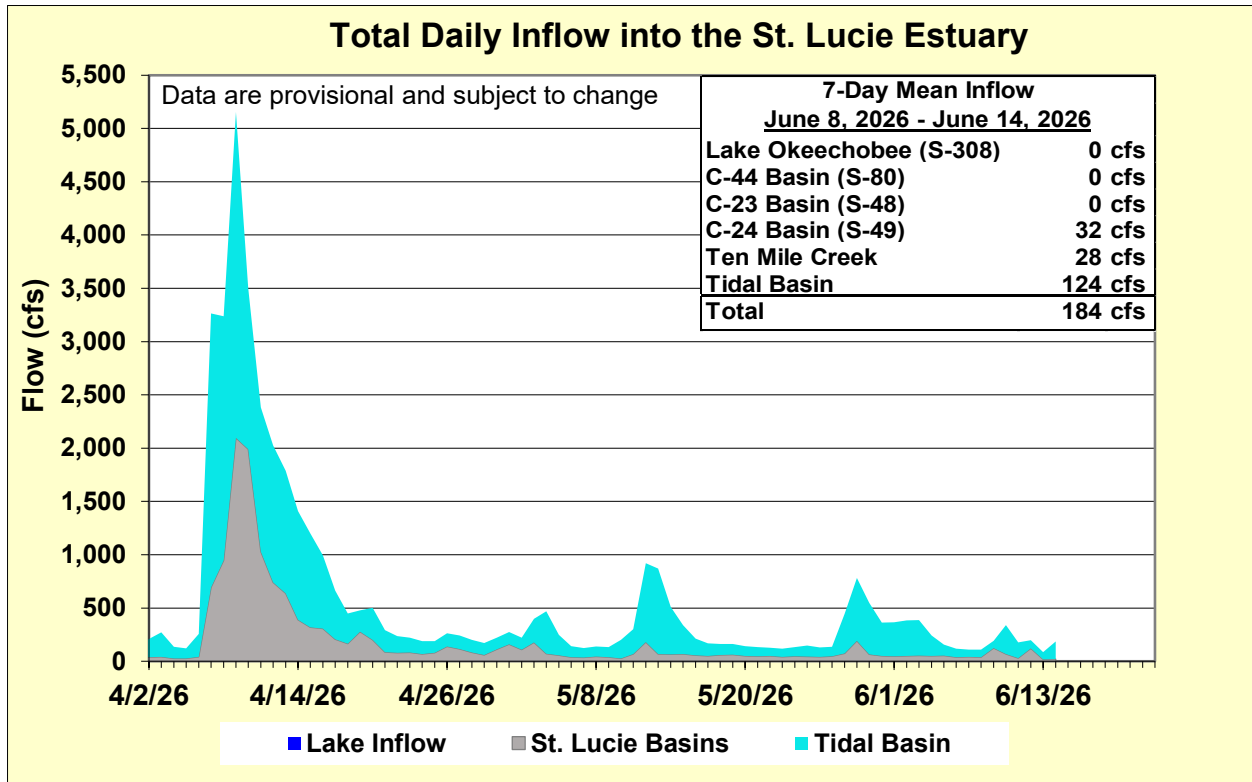
### **Minimum Flows and Minimum Levels**

The minimum flows and levels (MFL) for the Caloosahatchee River Estuary is a 30-day moving average flow of 457 cfs or greater at S-79. The current 30-day average flow at S-79 is 425 cfs (**Figure ES-14**), which is an exceedance.

The MFL for the Northwest Fork of the Loxahatchee River is a) flows at Lainhart Dam maintained at 35 cfs or greater and b) the 20-day moving average salinity of 2 or less at River Mile (RM) 9.2. An exceedance occurs when flows decline below 35 cfs for more than 20 consecutive days or when the 20-day moving average salinity at River Mile 9.2 exceeds 2. The current daily average flow at Lainhart Dam is 16 cfs and has been below the MFL for 22 consecutive days, which is an exceedance (**Figure ES-15**). The 20-day average salinity at RM 9.2 is 0.8 (**Figure ES-16**).



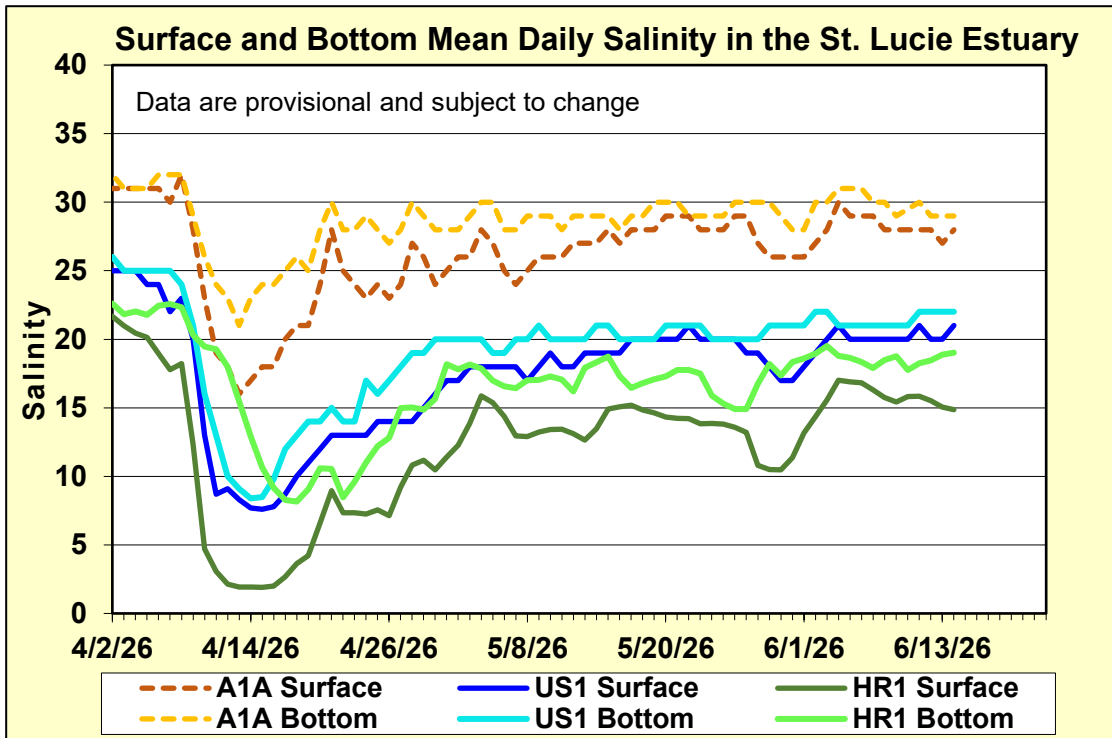
**Figure ES-1.** Basins, water control structures and salinity monitoring sites in the St. Lucie Estuary.



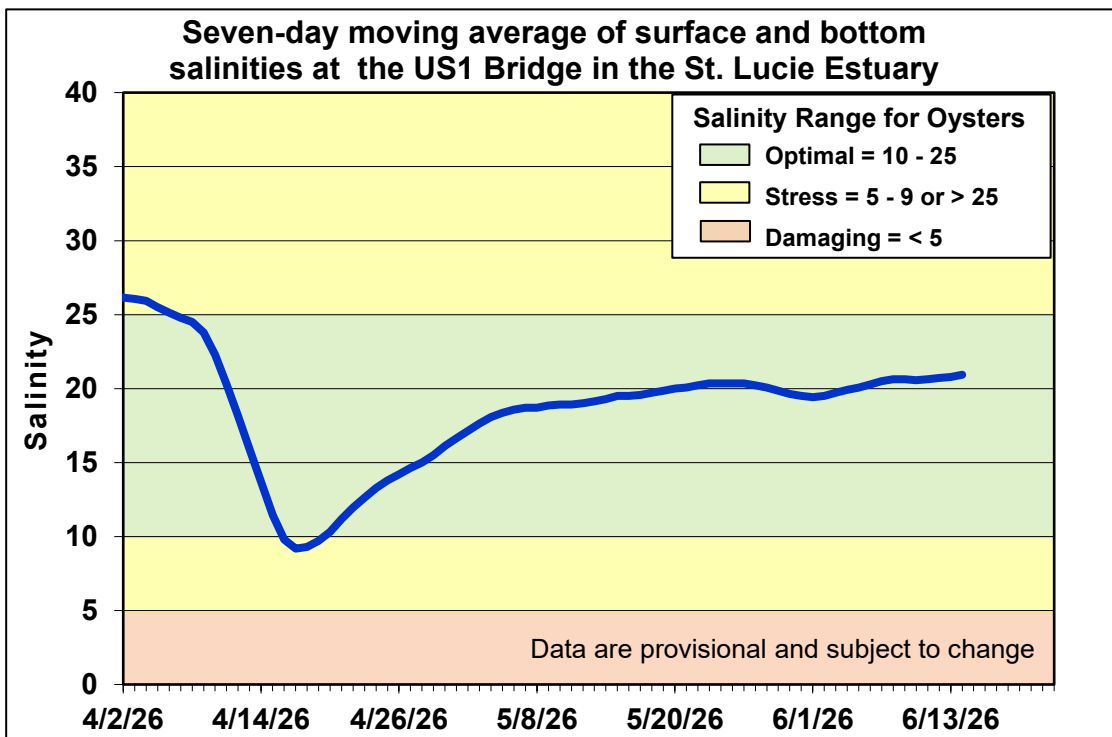
**Figure ES-2.** Total daily inflows from Lake Okeechobee and runoff from the C-44, C-23, C-24, Ten Mile Creek, and Tidal Basins into the St. Lucie Estuary.

**Table ES-1.** Seven-day mean salinity at oyster monitoring sites in the St. Lucie Estuary. Current means are in bold font; previous week's means are in parentheses. The envelope reflects the optimum salinity range for adult eastern oysters (*Crassostrea virginica*) in the estuary. Data are provisional.

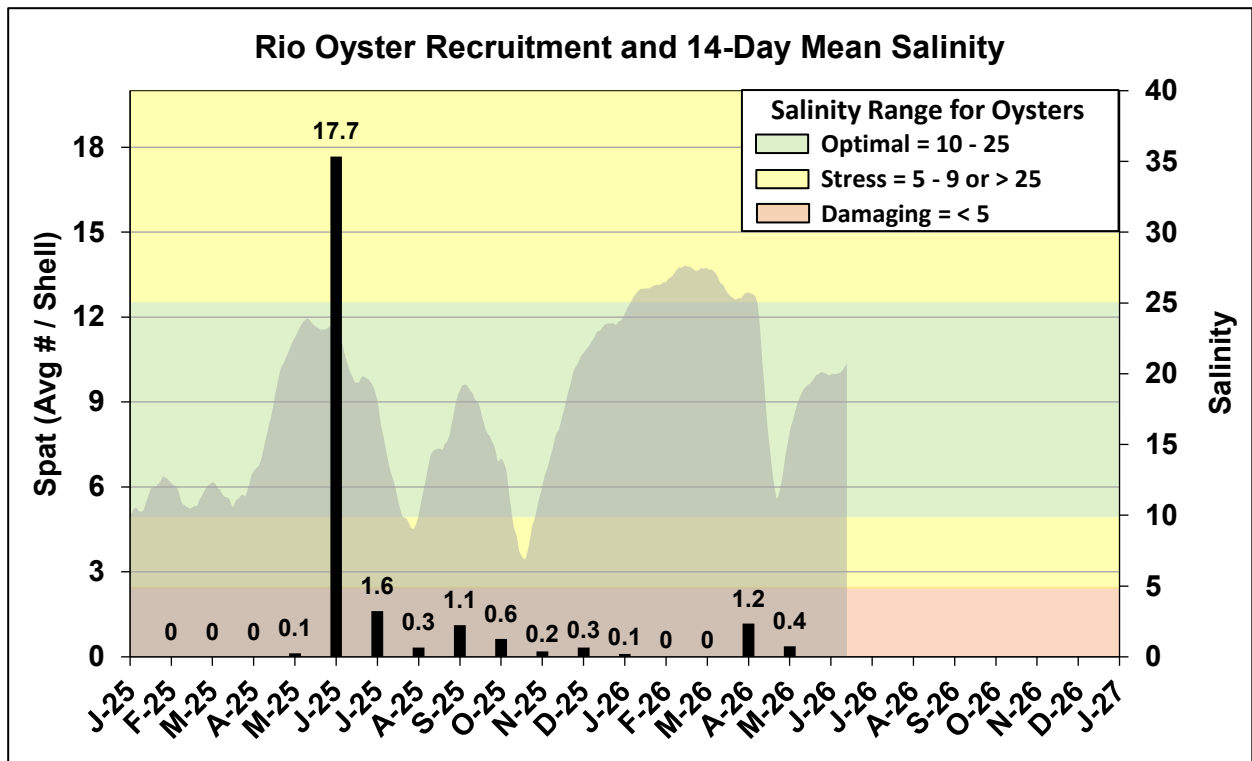
Sampling Site	Surface	Bottom	Optimum Envelope
HR1 (North Fork)	<b>15.5</b> (15.7)	<b>18.5</b> (18.7)	10.0 – 25.0
US1 Bridge	<b>20.3</b> (19.7)	<b>21.6</b> (21.3)	10.0 – 25.0
A1A Bridge	<b>27.9</b> (28.3)	<b>29.4</b> (30.1)	10.0 – 25.0



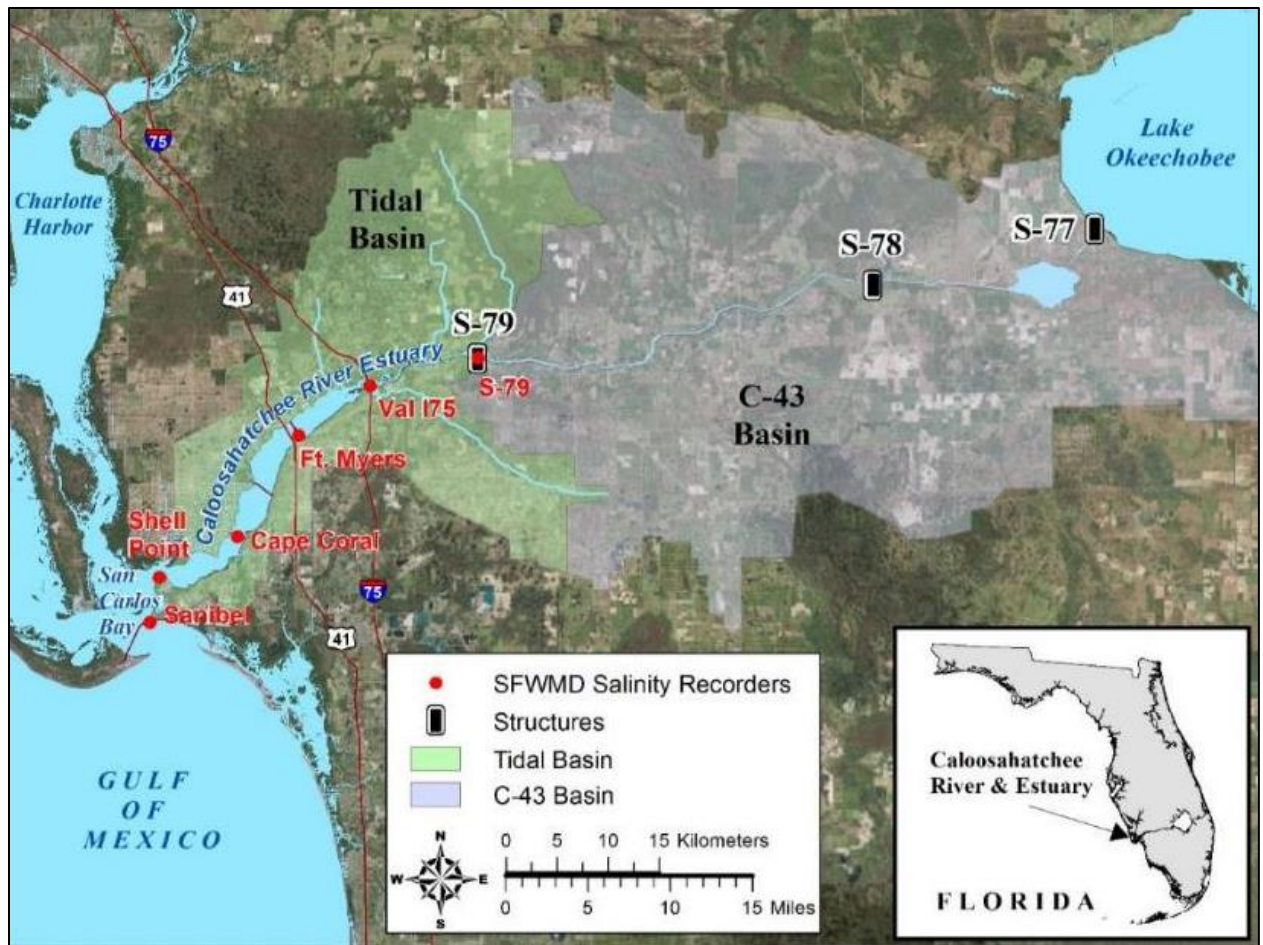
**Figure ES-3.** Mean daily salinity at the A1A, US1, and HR1 sites in the St. Lucie Estuary.



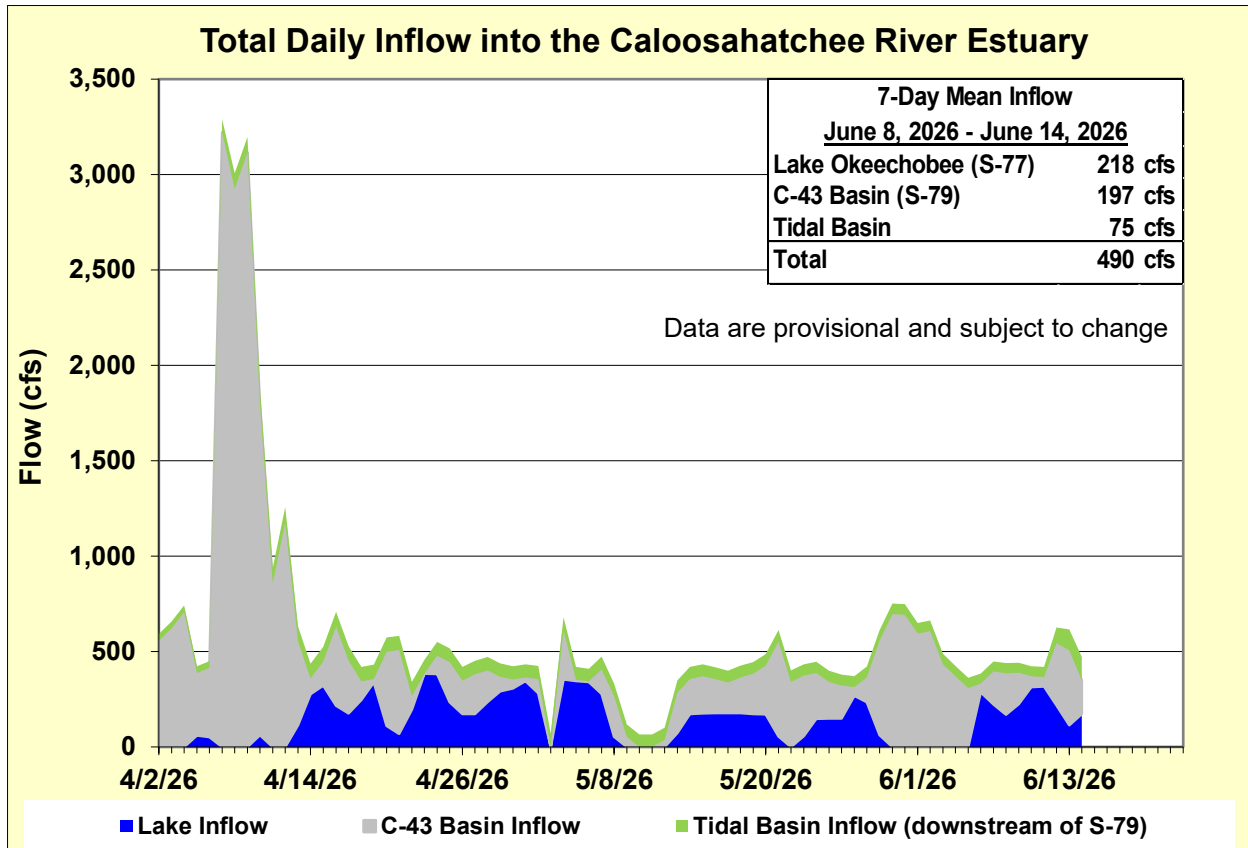
**Figure ES-4.** Seven-day moving average of the surface and bottom salinities at the US1 Bridge in the St. Lucie Estuary.



**Figure ES-5.** Mean oyster recruitment at the Rio oyster monitoring station and 14-day mean salinity at US1 Bridge.



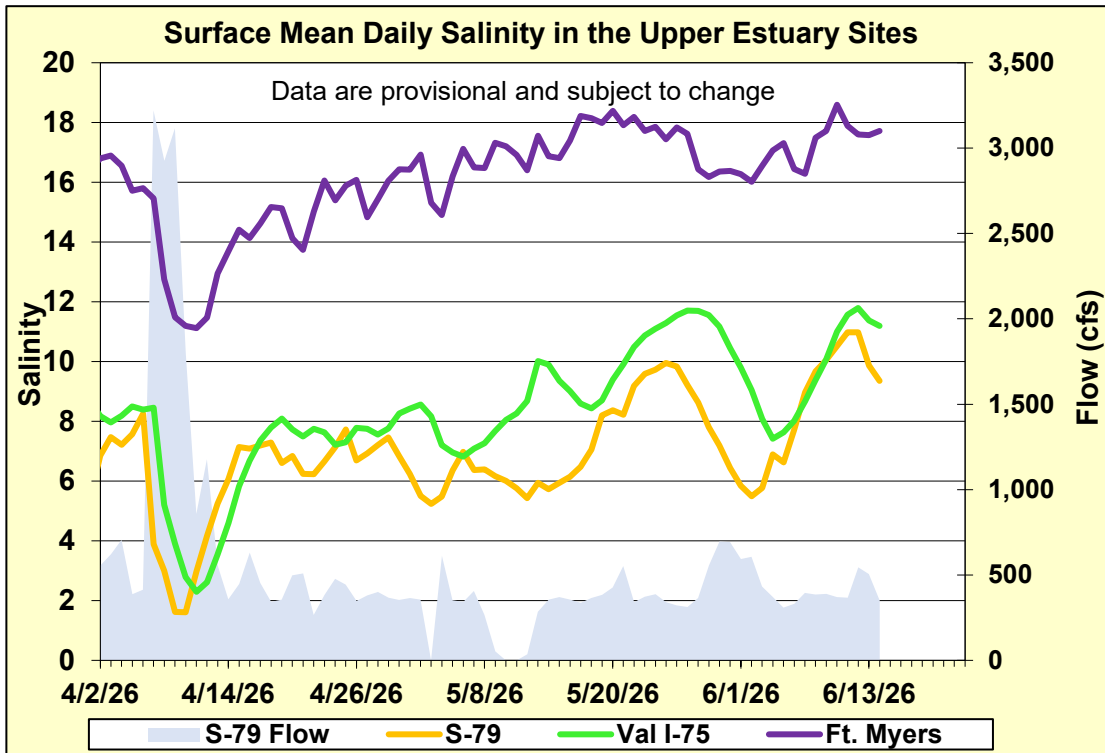
**Figure ES-6.** Basins, water control structures, and salinity monitoring sites in the Caloosahatchee River Estuary.



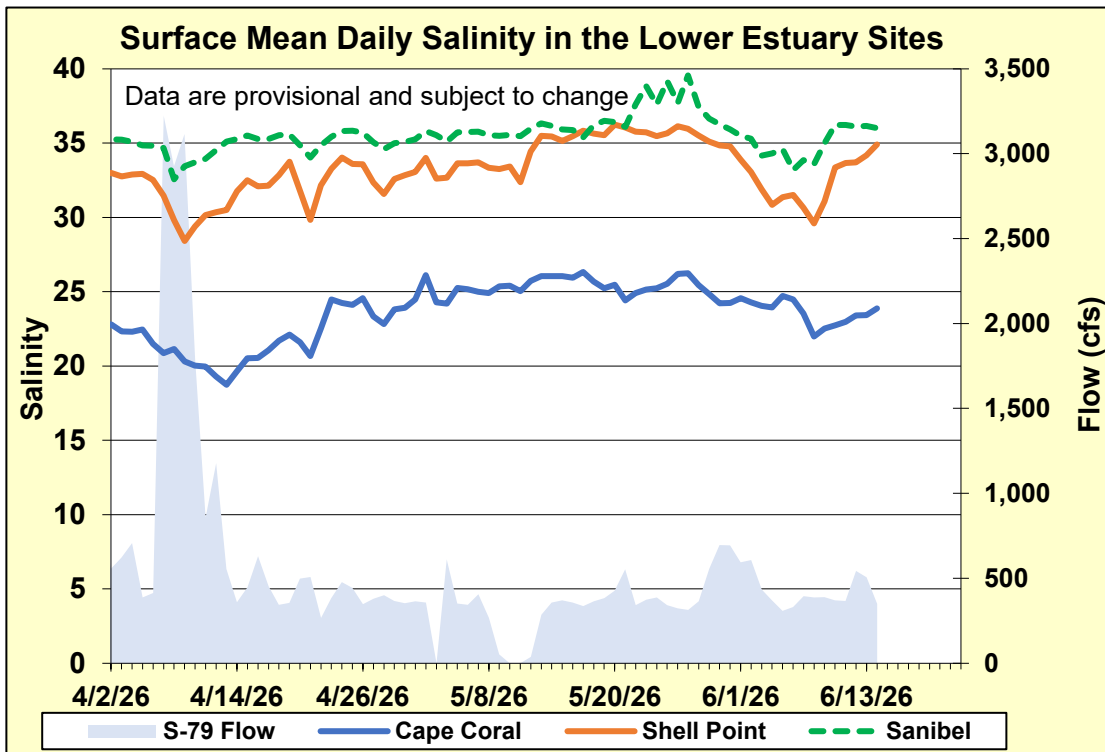
**Figure ES-7.** Total daily inflows from Lake Okeechobee, and runoff from the C-43 and Tidal basins into the Caloosahatchee River Estuary.

**Table ES-2.** Seven-day mean salinity at six monitoring sites in the Caloosahatchee River Estuary. Current means are in bold font; previous week's means are in parentheses. The envelope in the upper estuary sites is for the protection of tape grass and the envelope in the lower estuary is the optimum salinity range for adult eastern oysters (*Crassostrea virginica*). Data are provisional.

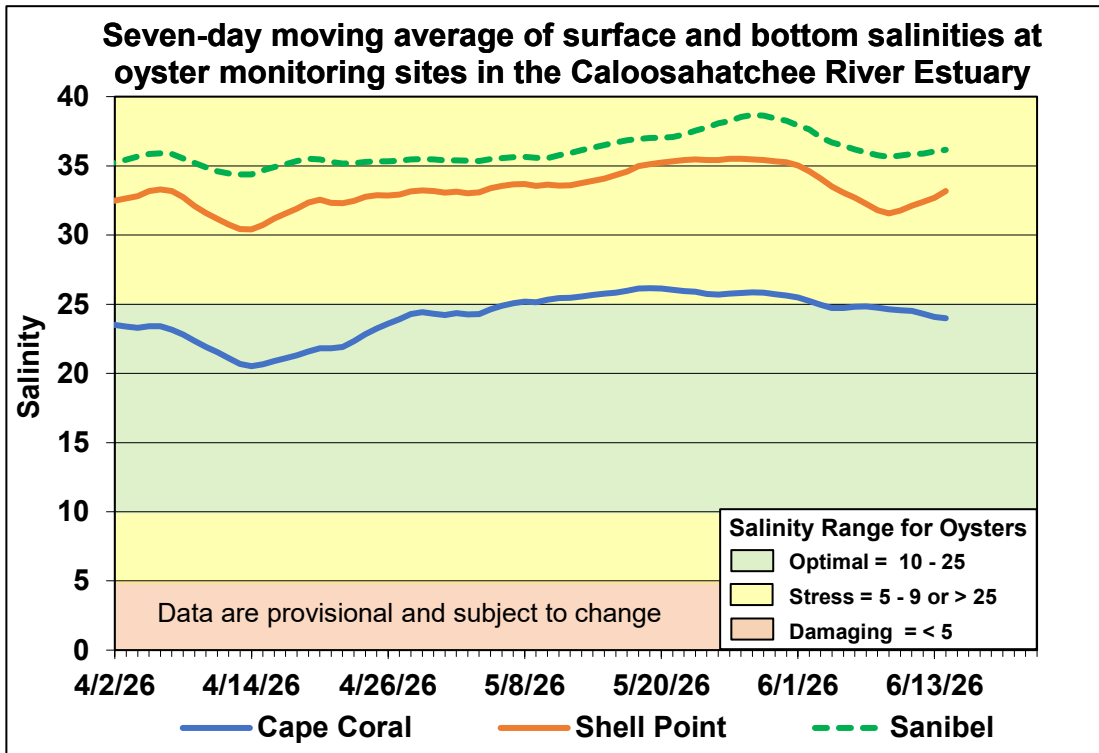
Sampling Site	Surface	Bottom	Optimum Envelope
S-79 (Franklin Lock)	<b>10.2</b> (6.8)	<b>11.1</b> (7.2)	0.0 – 10.0
Val I-75	<b>10.9</b> (8.4)	<b>14.1</b> (9.6)	0.0 – 10.0
Fort Myers Yacht Basin	<b>17.8</b> (16.6)	<b>20.2</b> (19.0)	0.0 – 10.0
Cape Coral	<b>23.0</b> (24.2)	<b>25.0</b> (25.4)	10.0 – 25.0
Shell Point	<b>32.9</b> (31.9)	<b>33.4</b> (32.6)	10.0 – 25.0
Sanibel	<b>35.6</b> (34.4)	<b>36.7</b> (37.5)	10.0 – 25.0



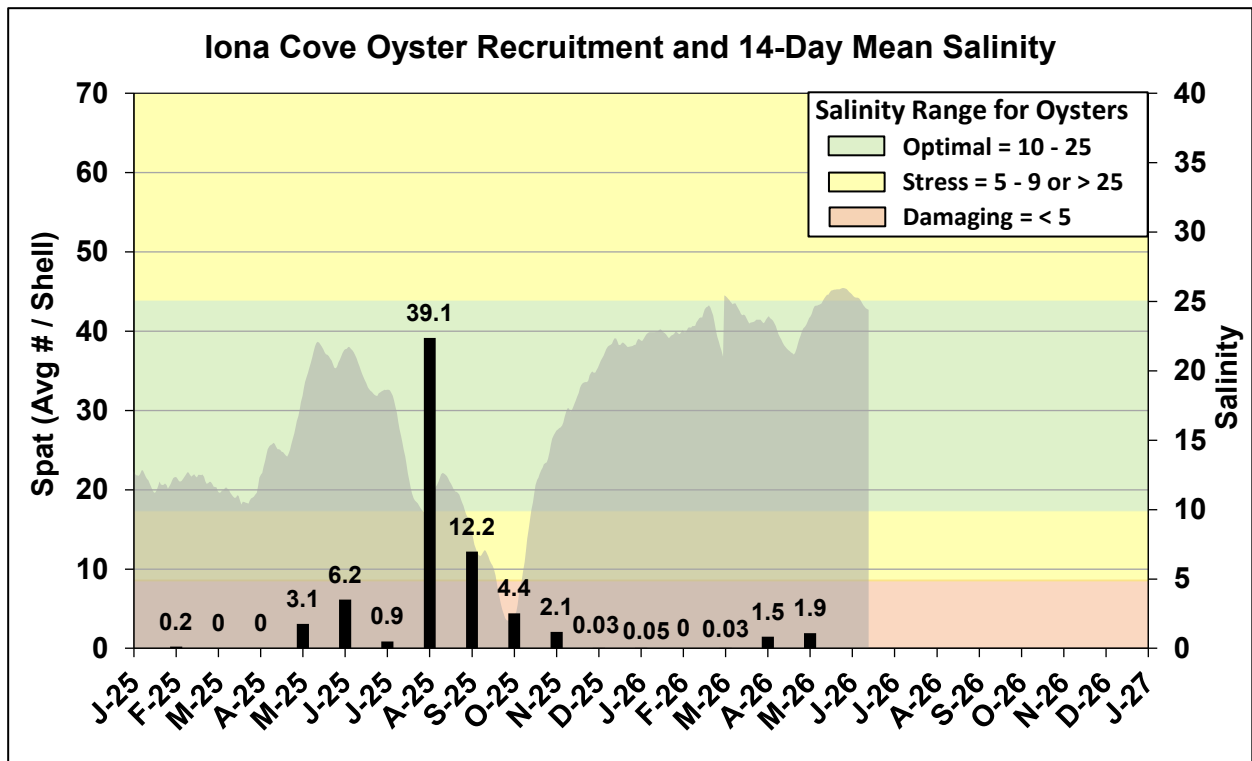
**Figure ES-8.** Mean daily salinity at upper Caloosahatchee River Estuary monitoring sites and mean daily flow at S-79.



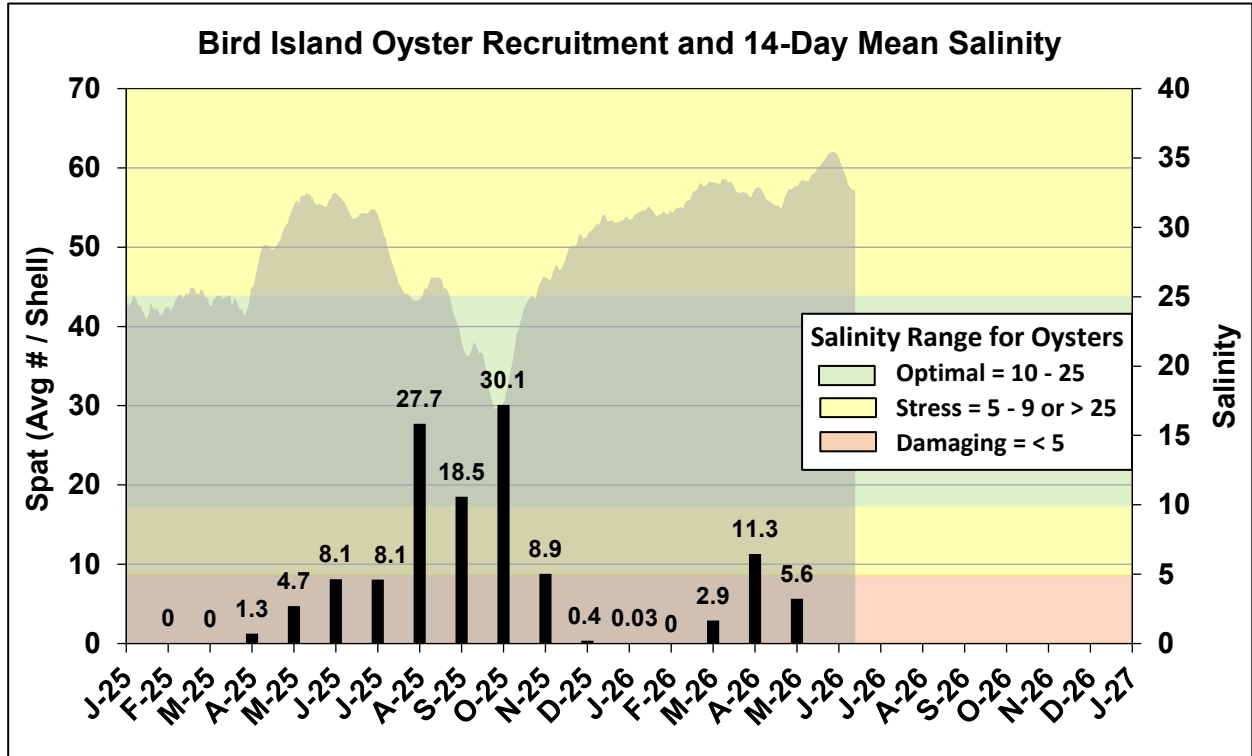
**Figure ES-9.** Mean daily surface salinity at lower Caloosahatchee River Estuary monitoring sites and mean daily flow at S-79.



**Figure ES-10.** Seven-day moving average of surface and bottom salinities at Cape Coral, Shell Point, and Sanibel monitoring sites in the Caloosahatchee River Estuary.



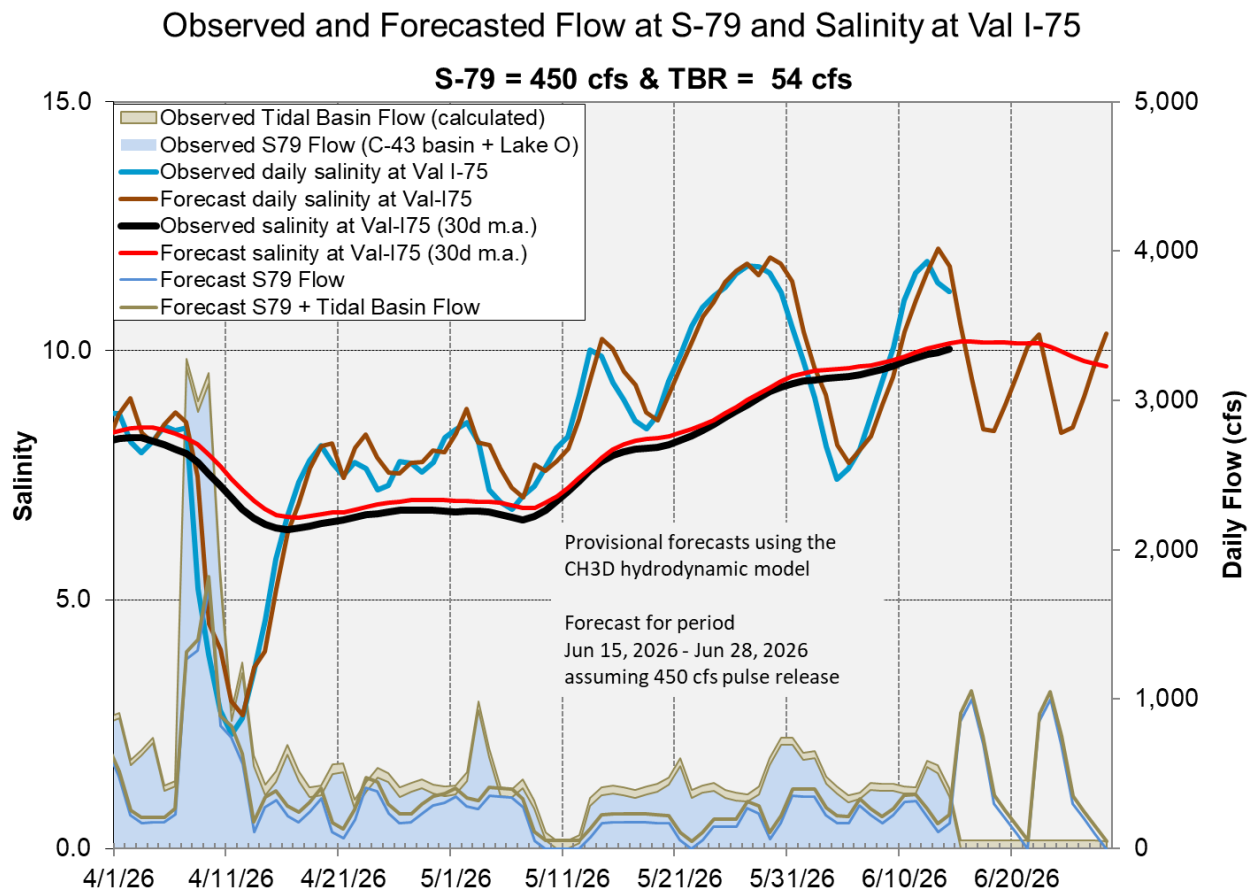
**Figure ES-11.** Mean oyster recruitment at the Iona Cove oyster monitoring station and 14-day mean salinity at Cape Coral.



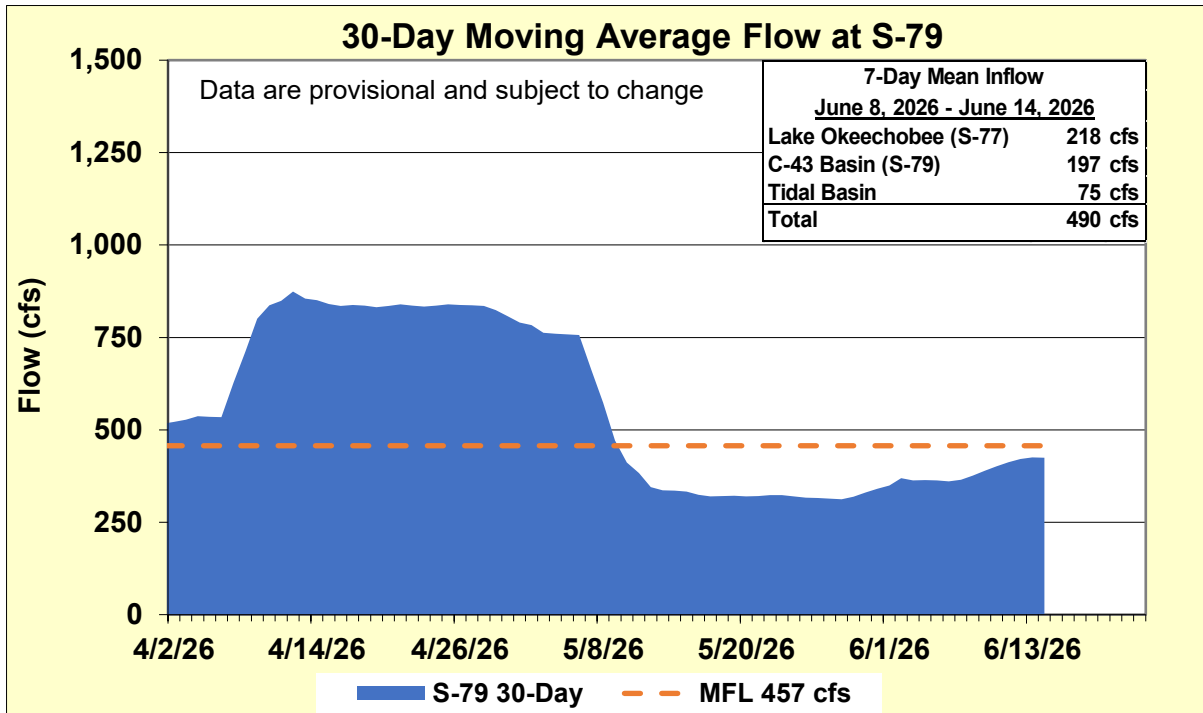
**Figure ES-12.** Mean oyster recruitment at the Bird Island oyster monitoring station and 14-day mean salinity at Shell Point.

**Table ES-3.** Predicted salinity at Val I-75 in the Caloosahatchee River Estuary at the end of the forecast period for various S-79 flow release scenarios.

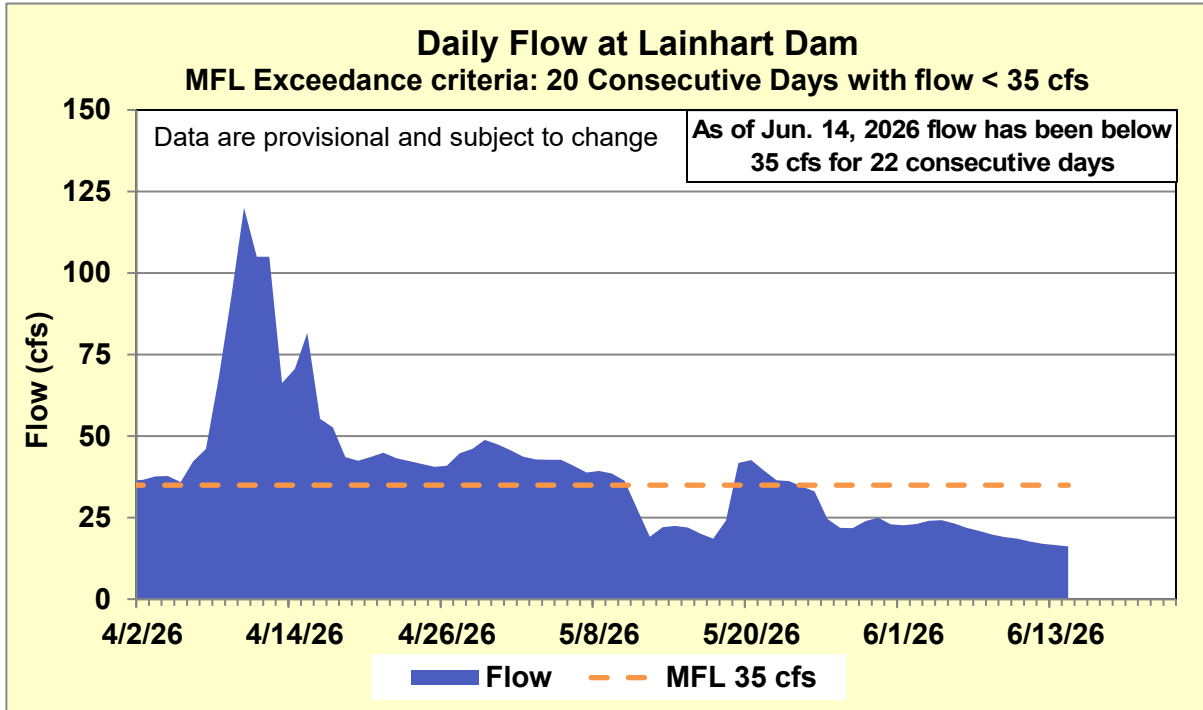
Scenario	Simulated S-79 Flow (cfs)	Tidal Basin Runoff (cfs)	Daily Salinity	30-Day Mean Salinity
A	450	54	10.4	9.7
B	750	54	7.0	8.7
C	1,000	54	5.8	8.1
D	1,500	54	3.4	7.2
E	2,000	54	1.7	6.6



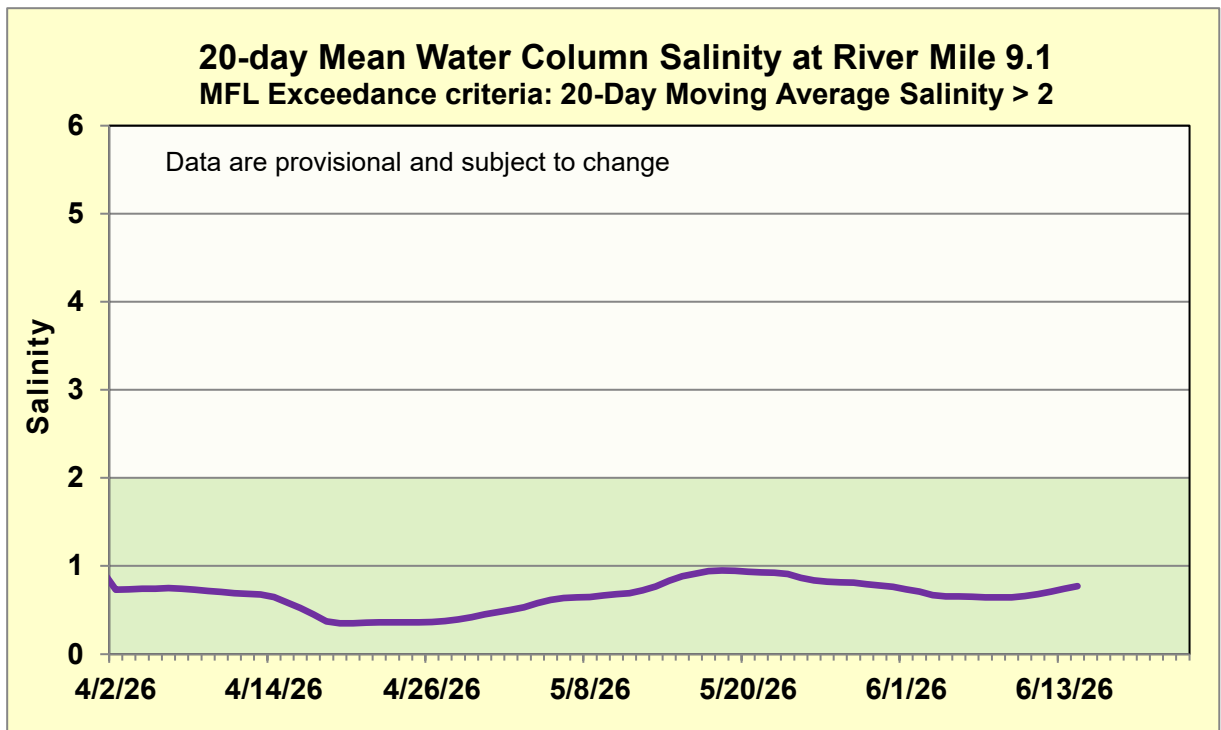
**Figure ES-13.** Surface salinity forecast at the Val I-75 site assuming a 450 cfs pulse release at S-79.



**Figure ES-14.** 30-day moving average flow at S-79 for the Caloosahatchee River Estuary Minimum Flows and Minimum Levels (MFL).



**Figure ES-15.** Average daily flow (cfs) at Lainhart Dam for the Loxahatchee River Estuary Minimum Flows and Minimum Levels (MFL).



**Figure ES-16.** 20-day moving average salinity at Lainhart Dam for the Loxahatchee River Estuary Minimum Flows and Minimum Levels (MFL).

## Stormwater Treatment Areas

**STA-1E:** STA-1E Central Flow-way is offline for construction activities. An operational restriction is in place in the Western Flow-way for post-construction vegetation grow-in. STA-1E Central Flow-way contains nests of Migratory Bird Treaty Act protected species. Online treatment cells are at or near target stage. The 365-day PLRs for the Western and Eastern Flow-way are below 1.0 g/m<sup>2</sup>/year (**Figure S-2**).

**STA-1W:** STA-1W Eastern Flow-way is offline for vegetation management activities. Treatment cells are at or slightly above target stage. The Eastern Flow-way contains nests of Migratory Bird Treaty Act protected species. Vegetation in the Western and Eastern Flow-ways is highly stressed. The 365-day PLRs for the Northern and Western Flow-ways are below 1.0 g/m<sup>2</sup>/year (**Figure S-2**).

**STA-2:** Treatment cells are at or slightly above target stage. An operational restriction is in place in Flow-way 2 and Flow-way 4 for vegetation management activities. Flow-ways 1 and 4 contain nests of Migratory Bird Treaty Act protected species. The 365-day PLRs for all Flow-ways are below 1.0 g/m<sup>2</sup>/year (**Figure S-3**).

**STA-3/4:** An operational restriction is in place in the Eastern Flow-way for vegetation management activities. Most treatment cells are at or slightly above target stage. Vegetation in the Central Flow-way is highly stressed. The 365-day PLRs for the Eastern, Central, and Western Flow-ways are below 1.0 g/m<sup>2</sup>/year (**Figure S-3**).

**STA-5/6:** Treatment cells are at or below target stage. All treatment cells have highly stressed vegetation conditions. The 365-day PLRs for all Flow-ways are below 1.0 g/m<sup>2</sup>/year. (**Figure S-4**).

For definitions on STA operational language see glossary following figures.

# Everglades Stormwater Treatment Areas - STAs

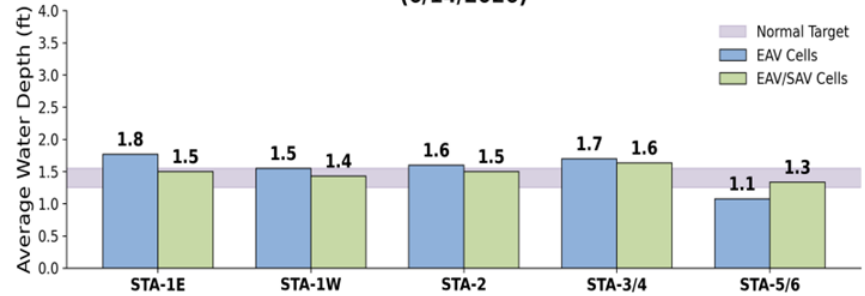
- Total WY2027 inflows to STAs (5/1/2026 to 6/14/2026): ~23,000 ac-ft
- Lake Okeechobee releases to FEBs/STAs
  - 6/8/2026 to 6/14/2026: 600 ac-ft
  - WY 2027: ~ 6,500 ac-ft
- Extensive vegetation management activities underway to address stressed and highly stressed vegetation in EAV cells
- MBTA protected species nesting in:
  - STA-1E Cells 4N & 4S
  - STA-1W Cells 1A, 1B
  - STA-2 Cells 1, 6
- All treatment cells are at or near target water depth

## Estimated Inflow and Outflow Volumes

Jun. 8<sup>th</sup>, 2026 - Jun. 14<sup>th</sup>, 2026 *Includes preliminary data*

	Total Inflow (acre-feet)	Total Outflow (acre-feet)
STA-1E	30	60
STA-1W	0	100
STA-2	0	300
STA-3/4	0	0
STA-5/6	0	0

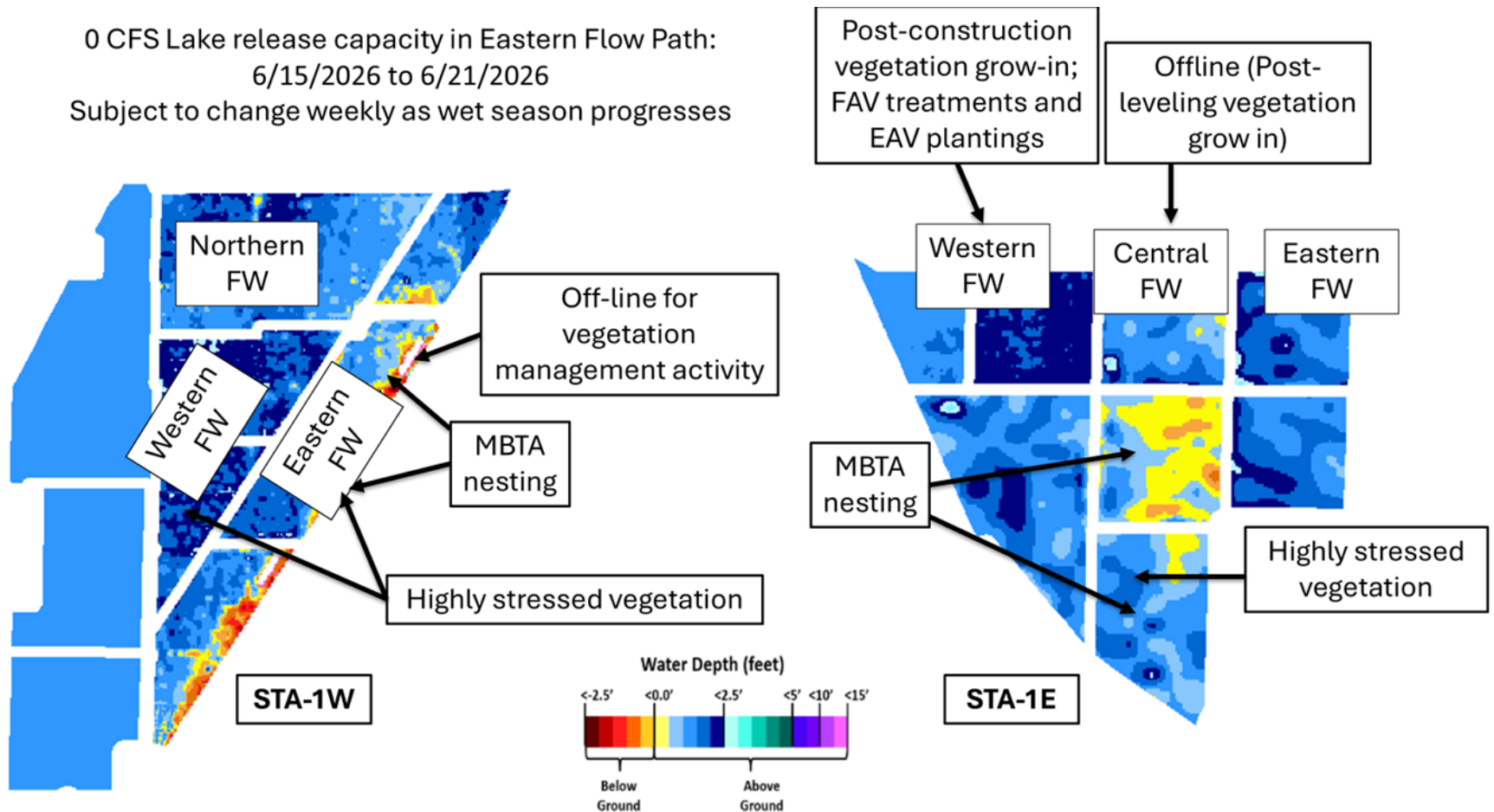
## Water Depths (6/14/2026)



*Includes preliminary data; Emergent Aquatic Vegetation (EAV); Submerged Aquatic Vegetation (SAV)*

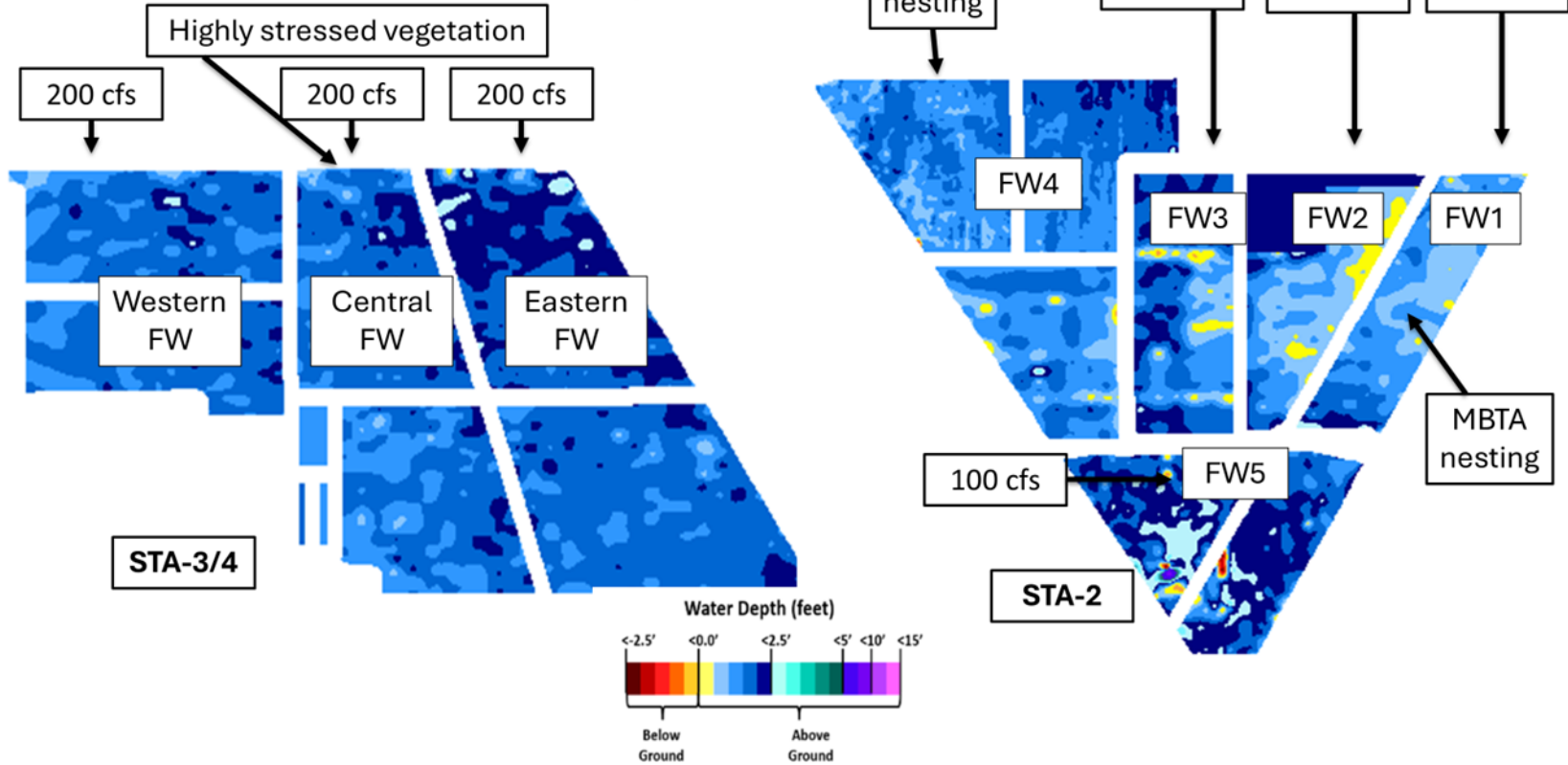
**Figure S-1.** STA depths and flow volumes

0 CFS Lake release capacity in Eastern Flow Path:  
6/15/2026 to 6/21/2026  
Subject to change weekly as wet season progresses

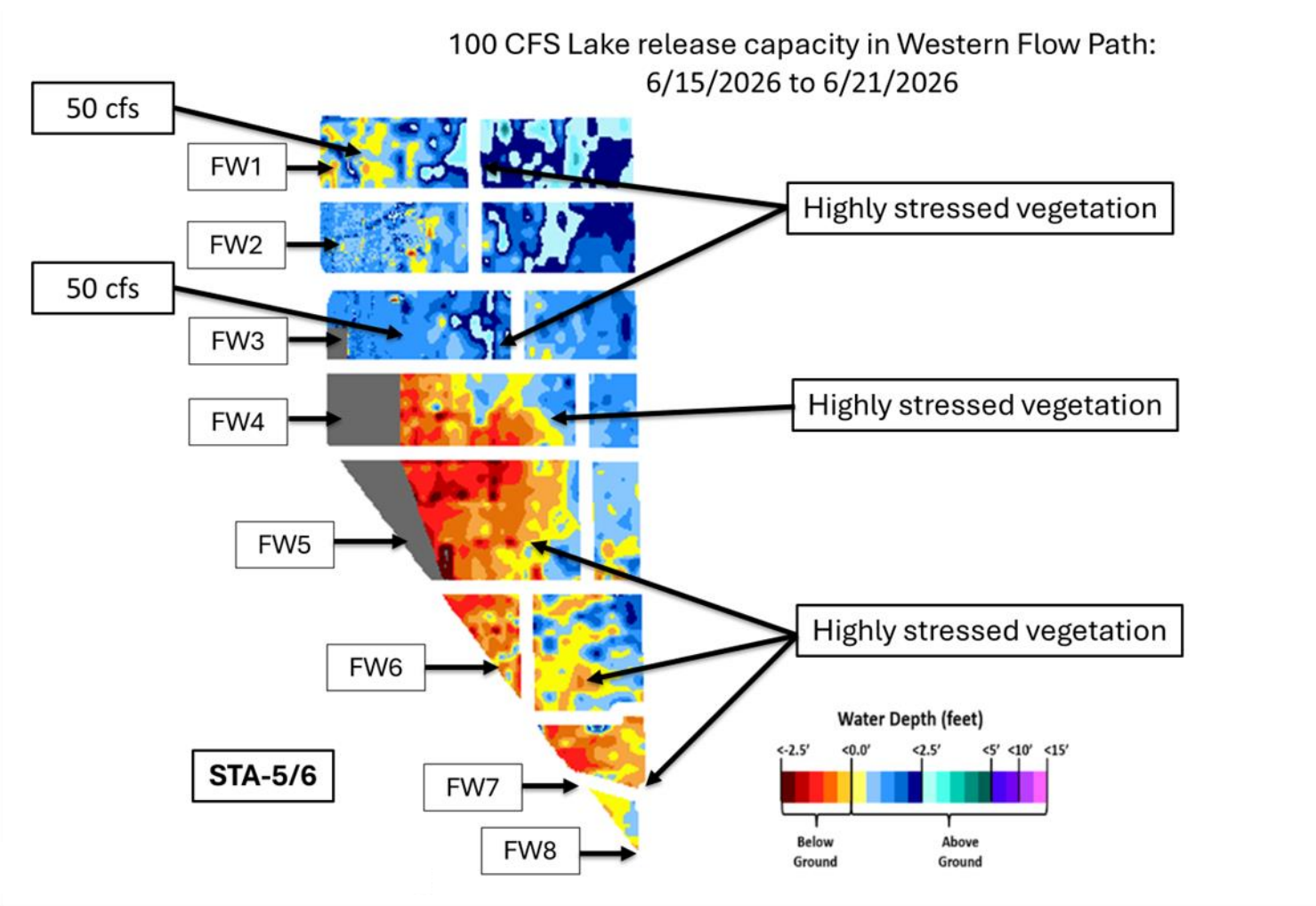


**Figure S-2.** Eastern Flow Path Weekly Status Report

1,000 CFS Lake release capacity in Central Flow Path:  
6/15/2026 to 6/21/2026  
Subject to change weekly as wet season progresses



**Figure S-3.** Central Flow Path Weekly Status Report



**Figure S-4.** Western Flow Path Weekly Status Report

## Basic Concepts and Definitions for STA Weekly Status Report

- **Inflow:** Sum of flow volume at all inflow structures to an STA.
- **Lake Inflow:** Portion of the STA total inflow volume that originates from Lake Okeechobee.
- **Outflow:** Sum of flow volume at outflow structures from an STA.
- **Total Phosphorus (TP):** Total mass of phosphorus in all its forms; including particulate, dissolved, etc.
- **Inflow Concentration:** TP concentration is the mass of TP in micrograms per liter of water,  $\mu\text{g/L}$  or ppb. Inflow concentration refers to the flow-weighted mean TP from all inflow structures over a period of time.
- **Outflow Concentration:** The flow-weighted mean TP from all outflow structures over a period of time. The outflow concentration represents the reduction of inflow TP achieved by STA treatment of the inflow water.
- **WQBEL:** The STA outflow concentration that is required upon completion of the Restoration Strategies projects by December 2025. The outflow concentration shall not exceed 13 ppb as an annual flow weighted mean in more than 3 out of 5 water years on a rolling basis and shall not exceed 19 ppb as an annual flow weighted in any water year.
- **Flow-Way (FW):** One or more treatment cells connected in series. Cells typically have emergent aquatic vegetation (EAV) in the front portion of the flow-way followed by a mix of EAV and submerged aquatic vegetation (SAV)
- **Vegetation Status:** Healthy means the vegetation condition is good and will allow the STA to perform as designed. Stressed means the vegetation is showing signs of poor health, such as browning or areas of vegetation die-off, or the cell contains undesirable vegetation such as floating exotic vegetation requiring treatment. The TP reduction capability of the STA is affected when the vegetation condition is poor.
- **Phosphorus Loading Rate (PLR):** Mass of inflow TP in grams, divided by total treatment area of STA in square meters, per year. In general, a 365-day value of less than 1.0 is needed for an STA to perform optimally. A PLR of 2.0 is considered very high and a PLR of 3.0 is considered extremely high. The TP reduction capability of the STA is affected when the PLR is high, very high and extremely high.
- **Online:** Online status means the FW can receive and treat inflow.
- **Online with Restriction:** The FW can receive and treat inflow, but the amount of flow or water level may be limited temporarily. For example, a vegetation rehabilitation effort may require reduced flows through an area while the new plants are establishing, or nesting by protected species may require a certain water level not to be exceeded.
- **Offline:** The FW is unable to receive and treat inflow due to repairs, construction, or other prohibitive reasons.
- **Depth:** Difference between the average surface water level in a cell and the average ground elevation in that cell. Target depths, or depths between flow events, are between 1.25 ft to 1.5 ft. As depth approaches or drops below zero, an increasing percentage of the cell is considered dry and STA conditions deteriorate. An increase in depth above target depth is expected with increasing flow. However, as depth increases much above the target depth and is sustained over a period of time, it can be detrimental to vegetation health and overall STA treatment performance.
- **Note:** The data provided in this summary report were developed using a combination of provisional and quality-assured flow and water quality data. In some cases, best professional judgment was used to estimate missing data and revise questionable data. Values provided are not considered final but are appropriate for use in STA operational decision-making.

## Everglades

### **Water Conservation Area**

#### **Regulation Schedules**

WCA-1: Stage declined steadily at the 1-8C gauge and remained above the regulation line last week by 0.12 feet on Sunday, June 14, 2026 (Figure **EV-1**).

WCA-2A: Last week's water depth at the 2-17 gauge declined steadily. Stages were 0.54 feet above the regulation line on Sunday (Figure **EV-2**).

WCA-3A: The 3-gauge average remains well within Zone B, with minimal change from last week. On Sunday, stages were approximately 1.6 feet NGVD below the Zone A regulation line. Stage at Gauge 62 (NW corner) began to decline last week and is now below the Upper Schedule line by 0.32 feet on Sunday (Figures **EV-3** and **EV-4**).

#### **Water Depths**

The SFWDAT model output for June 15, 2026, illustrates that WCA-1 and WCA-2A are drier in the north compared to one month ago. Significantly below ground conditions exist across WCA-3A. Water depths remain low across Big Cypress National Preserve (BCNP), WCA-3A, and -3B and are below average across the majority of WCA-1 and WCA-2A impacting soil, flora, and fauna. WCA-3A and -3B remained dry, having received the least amount of rainfall in the system over the last month, severely limiting wading bird nesting and foraging. In Everglades National Park (ENP), both Taylor Slough (TS) and Shark River Slough (SRS) show more connection from north to south compared to a month ago. TS shows more connection to the coast while SRS is more limited. Comparing current conditions to water depths over the last twenty years, WCA-1 water depths are below average with some ponding occurring in the SE portion of that basin. WCA-2A water depths are below average in the central and north but above average in the southeast section. BCNP water depths continue to be below average in the west/center of the preserve; even average water depths for this time of year are significantly below ground along Tamiami Trail and US-29. Within WCA-3A and -3B, water depths remain below the 10th percentile. Only inflows are keeping a small portion of northwestern WCA-3A near average. Recurring below average depths in the central Everglades are illustrating the system level importance of maintaining water in the sloughs and low-water refugia in the central region. Conditions in most of ENP are now below average, with exception to a portion of the southwest coast and the Taylor Slough region, which remain with above average depths. See figures **EV-5** through **EV-6**.

#### **Taylor Slough and Florida Bay**

All stages decreased across Taylor Slough over the past week, with an average decrease of 0.15 feet for the week. Changes ranged from -0.25 feet at CT50R in the C-111 area to -0.02 feet at P37 in the southern slough (**Figures EV-7** and **EV-8**). Taylor Slough water levels are just above the recent average (WY1993-2016) for this time of year by 0.5 inches compared to before the Florida Bay Initiative (starting in 2017), a decrease of 5.1 inches relative to last week. Stages at Craighead Pond (CP) and Taylor Slough Bridge (TSB) are below the estimated historical average by 0.58 and 1.89 feet, respectively.

Average salinity in Florida Bay was 36.7, an increase of 0.7 from last week. Salinity changes ranged from -1.7 at Joe Bay (JB) in the eastern nearshore region to +2.0 at Buoy Key (BK) in the western region (**Figure EV-7**). Salinity remains above the estimated historical average and within the WY2001-2016 Interquartile Range (IQR) for all three regions (**Figure EV-9**). Salinity in the central and western regions are near and above the hypersalinity threshold, respectively. Bay-wide salinity is above its recent average (WY1993-2016) for this time of year by 3.6, an increase of 2.1 from last week.

Salinity at the Taylor River (TR) station in the mangrove zone (tracked for the Florida Bay MFL) was 17.3, an increase of 2.1 from last week (**Figure EV-10**). The 365-day moving sum of flow from the five major creeks (McCormick Creek, Taylor River, Mud Creek, Trout Creek, West Highway Creek) was unable to be assessed due to missing data.

Average rainfall across Taylor Slough and Florida Bay was 0.13 inches for the week, based on the 18 gauges used for this report. Rainfall ranged from 0.00 inches at nine stations to 0.62 inches at P37 in the southern slough (**Figure EV-11**). Wind directions and speeds in Florida Bay ranged from 1.1 mph SE on June 8<sup>th</sup> to 18.8 mph E on June 10<sup>th</sup> (**Figure EV-11**).

The Taylor River, Mud Creek, and West Highway Creek flow stations are currently offline until further notice, so data from all five major creeks are unable to be assessed. Based on the available data from Trout and McCormick Creeks, average daily flow totaled 257 acre-feet, with net positive flows for the week. Total daily creek flow ranged from -586 acre-feet on June 14<sup>th</sup> to 806 acre-feet on June 9<sup>th</sup> (**Figure EV-13**). Average daily flow from Alligator Creek was -76 acre-feet, with net negative flows for the week (**Figure EV-13**).

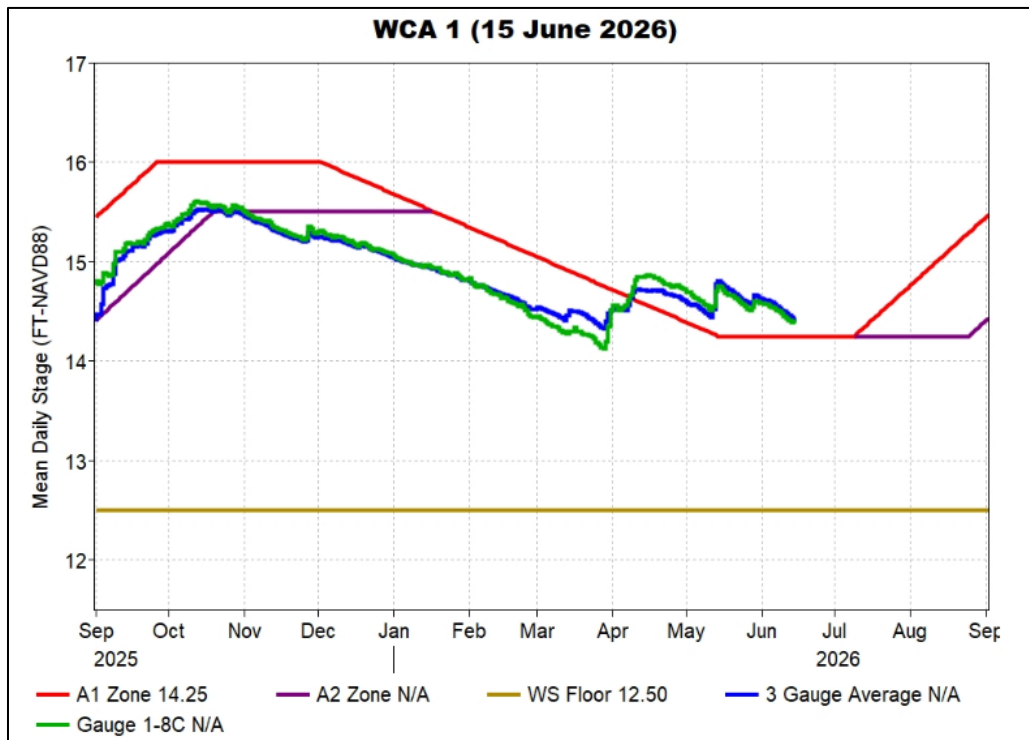
***Implications/considerations for water management.***

- Due to current drought conditions, slower recessions and more ascensions would help to protect the wetland ecology from damaging dry conditions in the wet season.
  - With continued drought conditions, conserving water within the WCAs, especially WCA-3A, will continue to be ecologically beneficial.
- Water depths remain above average in southern WCA-2A where shallower conditions on average are needed to recover ridge and slough habitat. With the start of the wet season, moving some water south into northern WCA-3A would be beneficial to the central Everglades. Balancing recessions in the north while moving water south combined with the start of the wet season can help to buffer ecological stress in drier areas and help provide for better habitat for wildlife.
- Freshwater input into Taylor Slough and the C-111 basin could help moderate salinities and support recovery of estuarine conditions in Florida Bay.

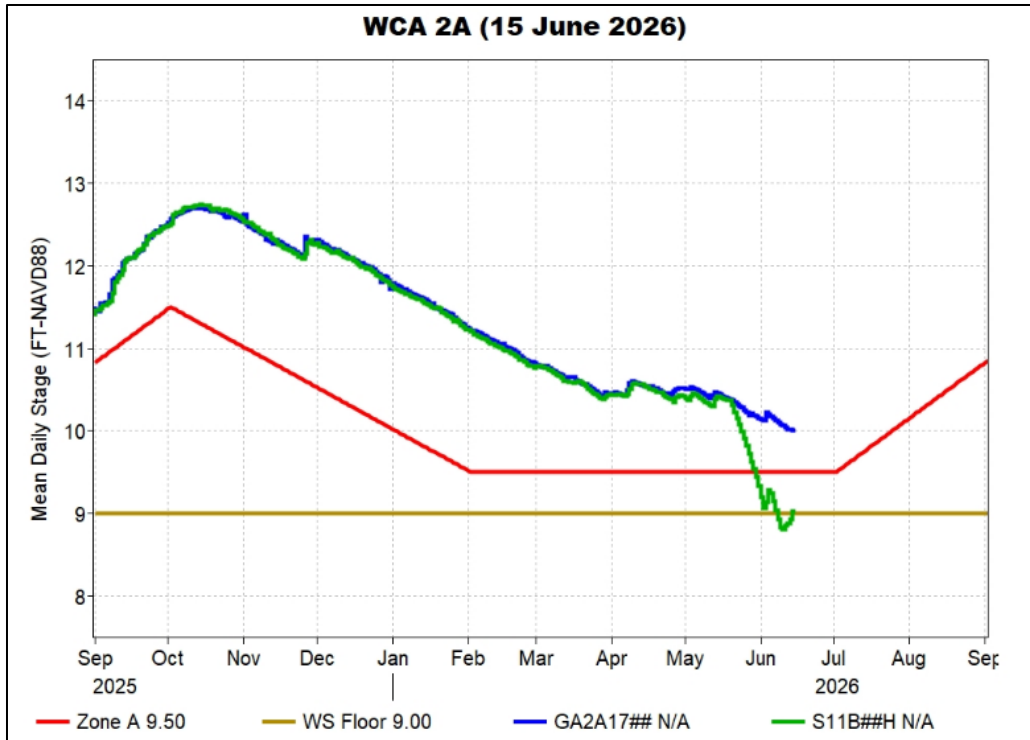
- Conserving water in the WCAs while providing freshwater input to the sloughs of ENP will require careful consideration of a balance between the upstream and downstream ecological needs of the system. Individual regional recommendations can be found in **Table EV-2**.

**Table EV-1.** Previous week’s rainfall and water depth changes in Everglades basins.

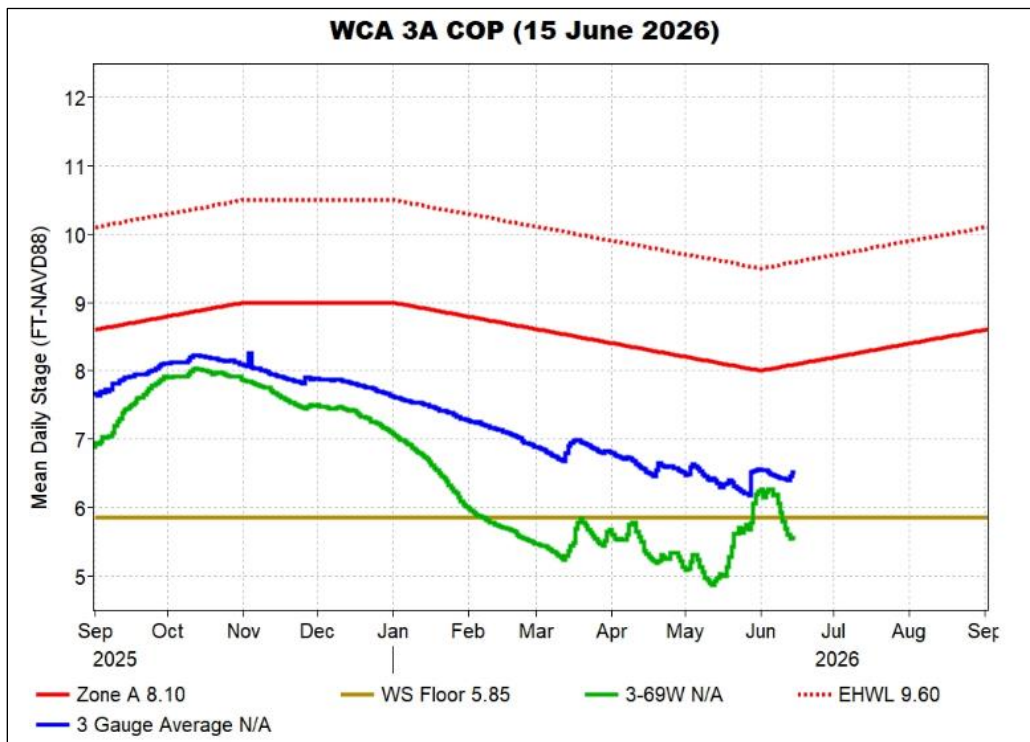
Everglades Region	Rainfall (inches)	Stage change (feet)
WCA-1	0.57	-0.12
WCA-2A	0.82	-0.13
WCA-2B	0.97	-0.16
WCA-3A	0.87	+0.03
WCA-3B	0.89	-0.02
ENP	1.72	-0.13



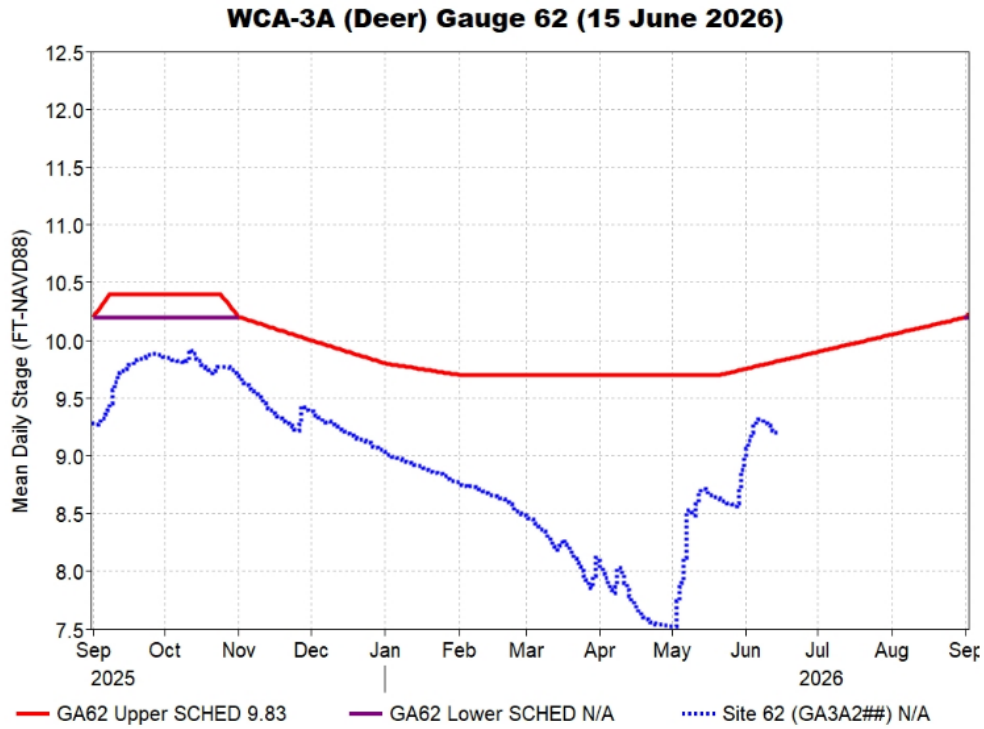
**Figure EV-1.** WCA-1 stage hydrographs and regulation schedule.



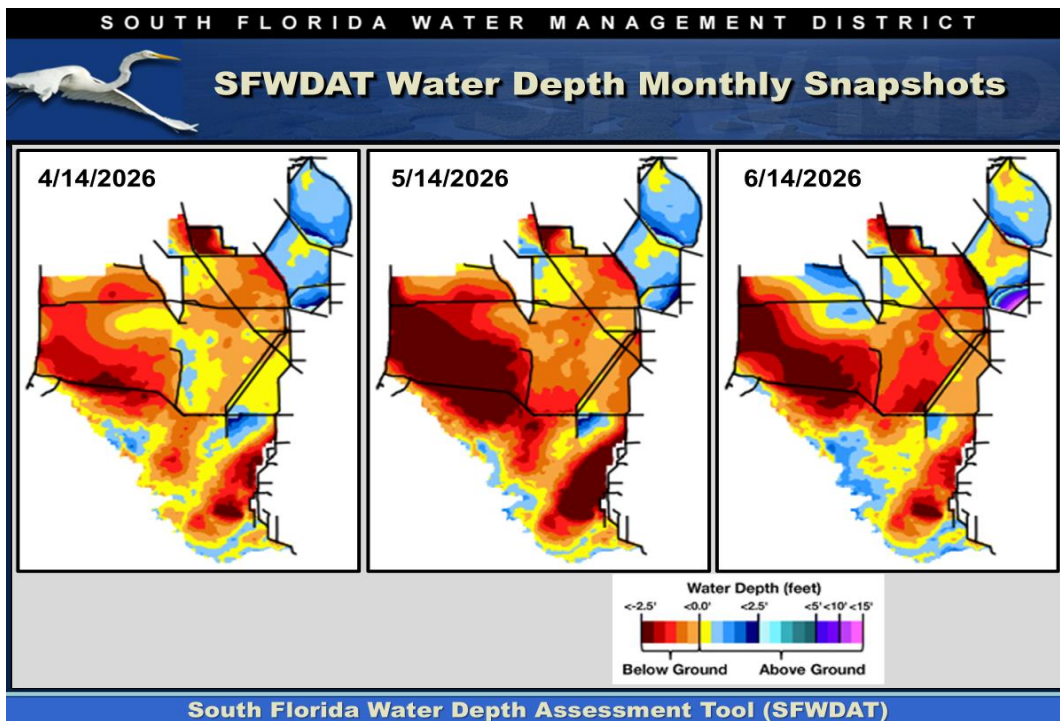
**Figure EV-2.** WCA-2A stage hydrographs and regulation schedule. 12.04



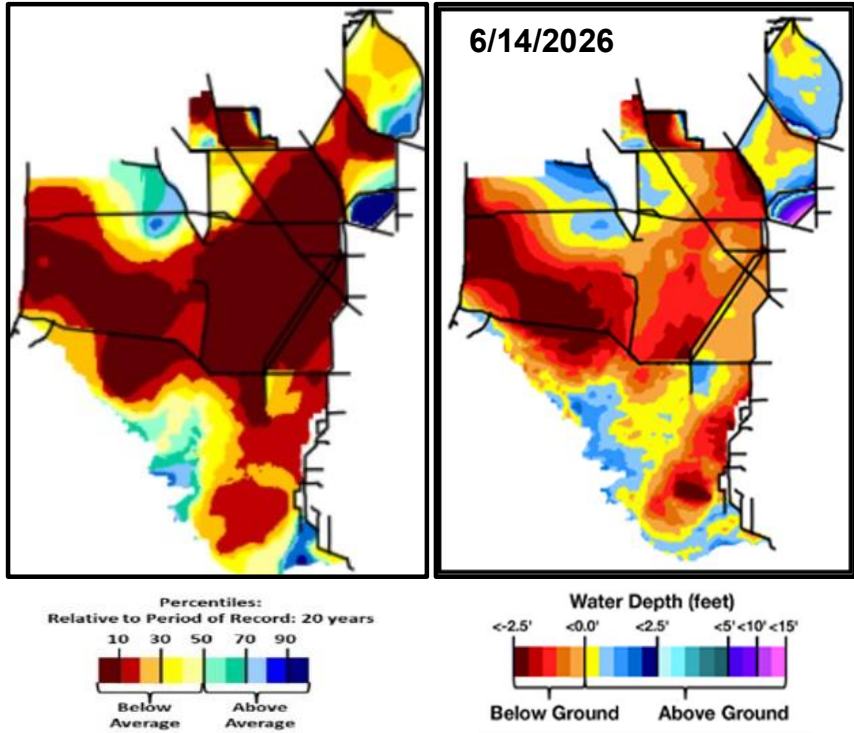
**Figure EV-3.** WCA-3A stage hydrographs (three-gauge average, 3-69W) and regulation schedule. 8.08



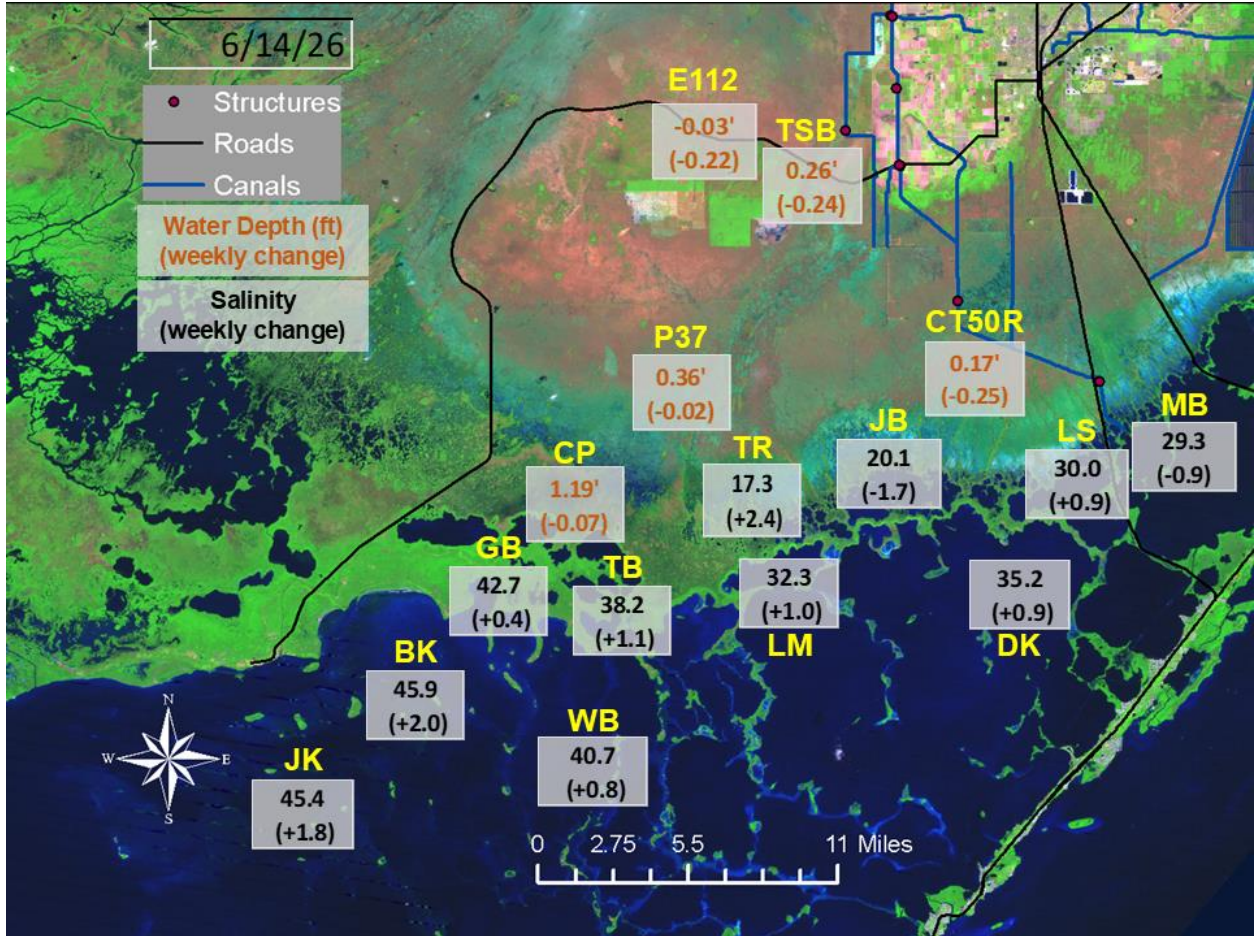
**Figure EV-4.** WCA-3A stage hydrograph (Deer gauge; Site 62) and regulation schedule.



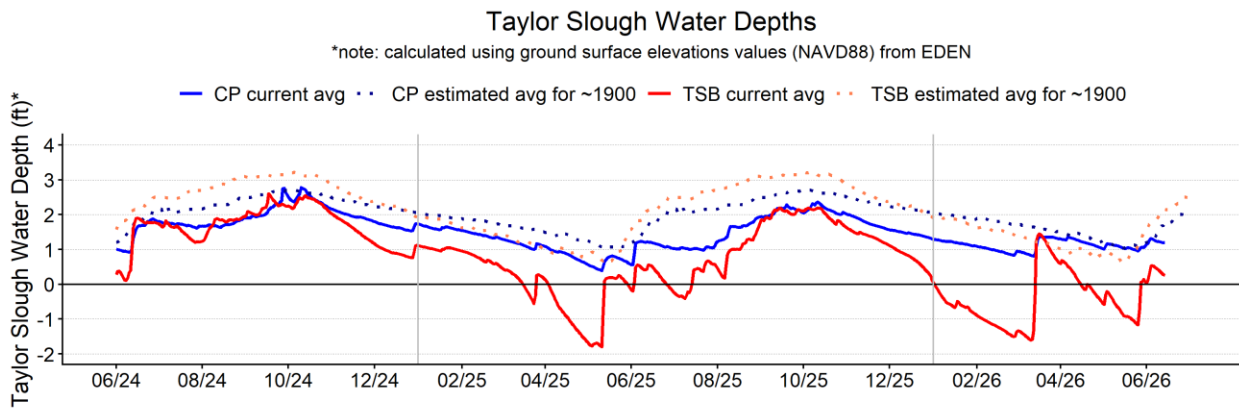
**Figure EV-5.** Everglades water depths from two months ago (left), one month ago (center) and present (right), based on SFWDAT



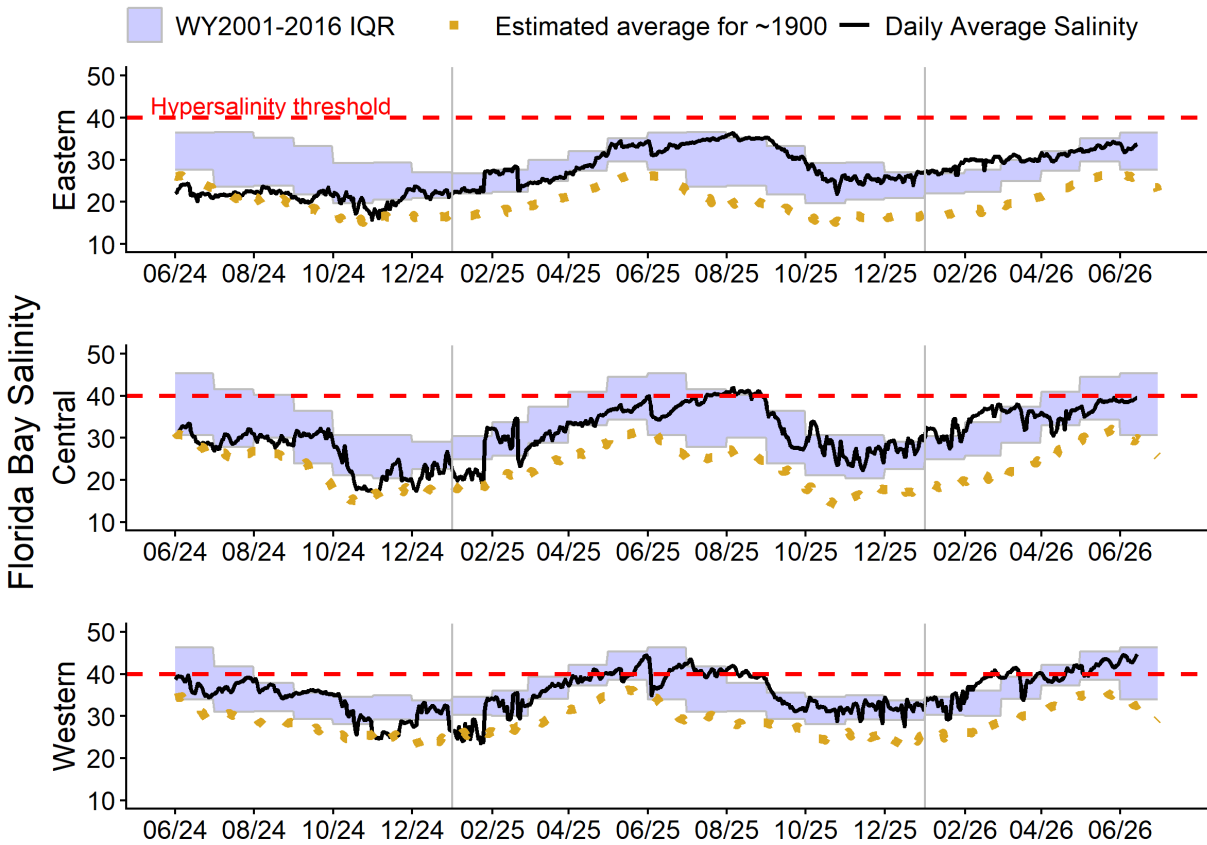
**Figure EV-6.** Present water depths (June 14, 2026) compared to the day of year relative to average (percentile) over the previous 20 years



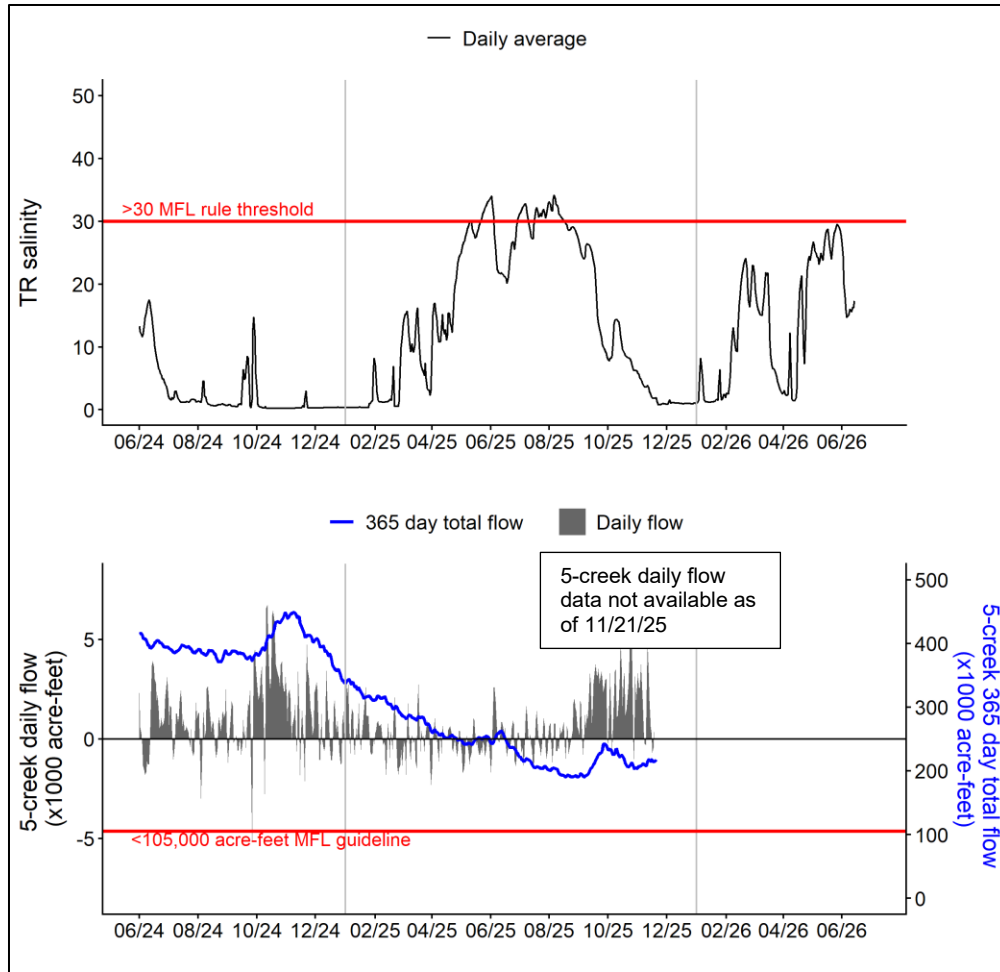
**Figure EV-7.** Taylor Slough water depths and Florida Bay salinities with changes since a week ago



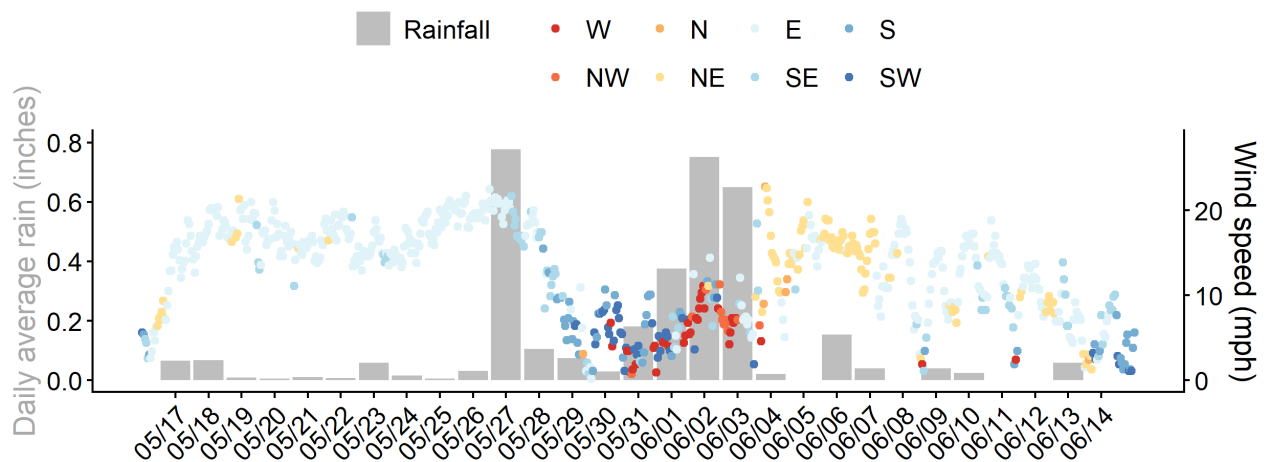
**Figure EV-8.** Taylor Slough water depth time series for Taylor Slough Bridge (TSB; northern slough) and Craighead Pond (CP; southern slough)



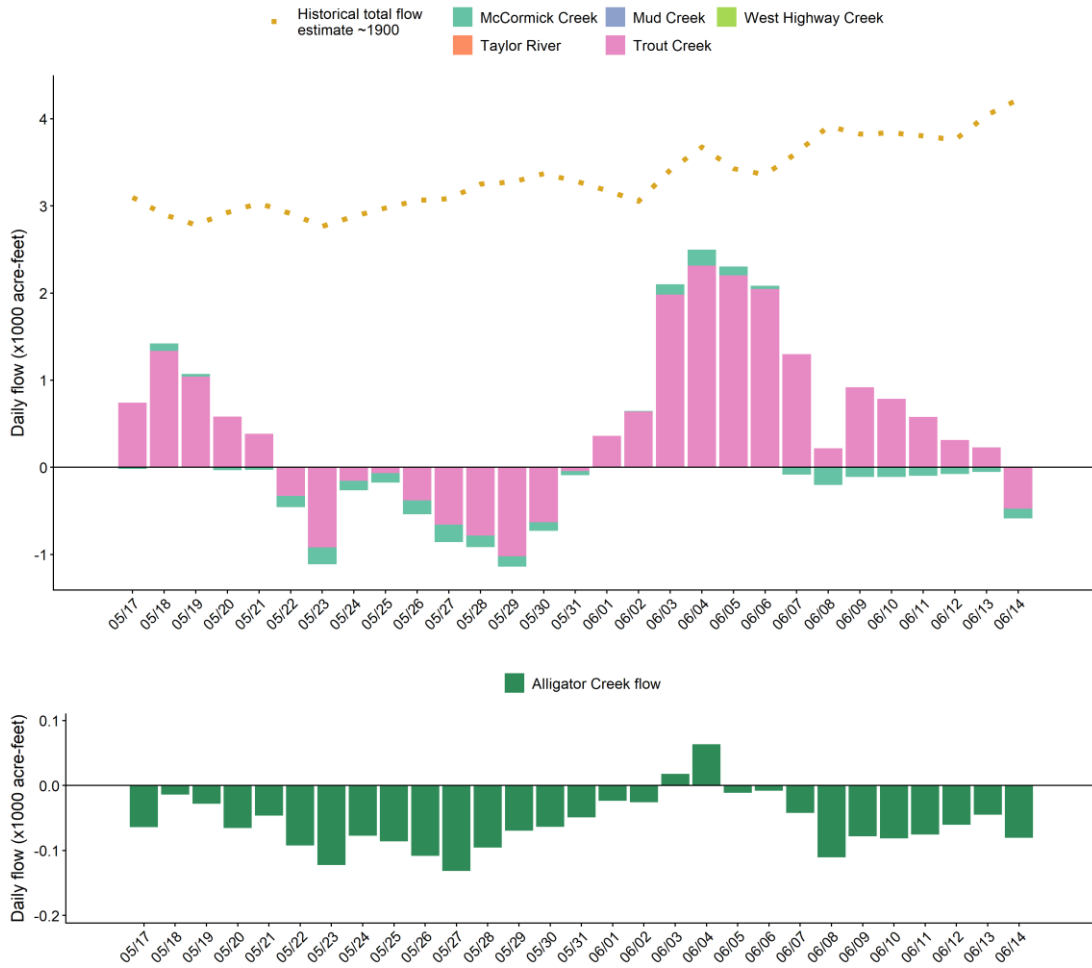
**Figure EV-9.** Eastern (top panel), Central (middle panel) and Western (bottom panel) Florida Bay daily average salinities with WY2001-2016 interquartile (25-75 percentile) ranges (IQR) and estimated historical daily average salinities. The hypersalinity threshold indicates the level at which salinities start to become harmful to seagrass.



**Figure EV-10.** Daily average salinity at Taylor River (TR) tracked for the Florida Bay MFL criteria. The 365-day total creek flow MFL metric is not currently available due to missing creek flow data



**Figure EV-11.** Daily average rain across Taylor Slough and Florida Bay, along with hourly average wind speed and direction (measured at Long Key) in Florida Bay over the past four weeks



**Figure EV-12.** Top: daily average creek flow summed between the five major creeks with estimated historical daily flow over the past four weeks (**note:** data from Taylor River, Mud Creek and West Highway Creek are currently unavailable since November 21, 2025). Bottom: Daily average Alligator Creek flow data. N/A indicates missing data.

**Table EV-2.** Weekly water depth changes and water management recommendations

<b>SFWMD Everglades Ecological Recommendations, June 14, 2026 (red is new)</b>			
	Weekly change	Recommendation	Reasons
<b>WCA-1</b>	Stage decreased by 0.12 feet.	A recession of no faster than 0.05 feet per week.	Conserve water, maintain within basin and downstream habitat and wildlife. Maintain maintenance access for vegetation management.
<b>WCA-2A</b>	Stage decreased by 0.13 feet	A recession of no faster than 0.05 feet per week.	Maintain within basin (north versus south) and downstream habitat and wildlife.
<b>WCA-2B</b>	Stage decreased by 0.16 feet	A recession of no faster than 0.12 feet per week.	Protect within basin and downstream habitat and wildlife.
<b>WCA-3A NE</b>	Stage data not available	A recession of no faster than 0.05 feet per week.	Conserve water, maintain within basin and downstream habitat and wildlife. Provide suitable depths for aquatic prey and protect against peat soil loss during the dry season.
<b>WCA-3A NW</b>	Stage decreased by 0.10 feet	A recession of no faster than 0.05 feet per week.	
<b>Central WCA-3A S</b>	Stage decreased by 0.18 feet	A recession of no faster than 0.05 feet per week.	Conserve water, maintain within basin and downstream habitat and wildlife. Provide suitable depths for aquatic prey and protect against peat soil loss during the dry season.
<b>Southern WCA-3A S</b>	Stage increased by 0.37 feet		
<b>WCA-3B</b>	Stage decreased by 0.02 feet	A recession of no faster than 0.12 feet per week.	Protect within basin and downstream habitat and wildlife.
<b>ENP-SRS</b>	Stage decreased by 0.13 feet.	Make discharges to ENP according to COP protocol, considering up/down stream ecological conditions.	Protect within basin and upstream habitat and wildlife.
<b>Taylor Slough</b>	Stage changes ranged from -0.25 feet to -0.02 feet	Move water southward as possible.	When available, provide freshwater to promote water movement.
<b>FB- Salinity</b>	Salinity changes ranged from -1.7 to +2.0	Move water southward as possible.	When available, provide freshwater to promote water movement.