



SOUTH FLORIDA WATER MANAGEMENT DISTRICT

3301 Gun Club Road, West Palm Beach, FL 33406

MEDIA ADVISORY

January 26, 2011

CONTACT:

Randy Smith

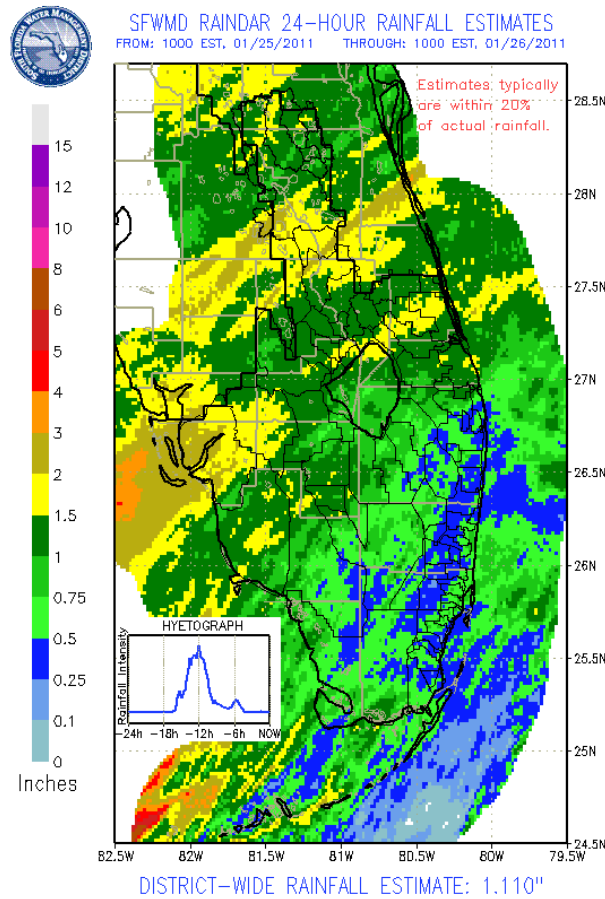
South Florida Water Management District

Office: (561) 682-2800 or Cellular: (561) 389-3386

www.sfwmd.gov/news

follow us on 

Front Provides Spike in January Rainfall Amounts
Despite overnight rainfall boost, deficit remains for 2010-2011 dry season



(Click on the map for a larger version.)

West Palm Beach, FL — A fast-moving cold front that pushed across South Florida on Tuesday night provided much-needed rainfall to the region, with some areas receiving nearly 1.5 inches overnight.

Rainfall for the last 24 hours averaged 1.11 inches across the 16-county region of the South Florida Water Management District (SFWMD). The Southwest Coast and the Kissimmee Basin recorded the highest rainfall totals over that time.

With five days left in the month, January's rainfall total now stands at 2.36 inches, which is 131 percent of the historical average for this point in the month.

Lake Okeechobee received more than an inch of rain during the last 24 hours. The lake is currently 12.41 feet above sea level, or about two feet below its historical average for this time of year.

The dry season remains in an overall rainfall slump, with 4.78 inches registered since the beginning of November, or only 74 percent of the historical average. The dry season was preceded by the driest October since the District began recordkeeping in 1932, with only 0.55 inches of rain for a deficit of more than 3 inches for the month.

With a significant La Niña effect still in place, the long-term rainfall forecast calls for a continuation of drier-than-average conditions for the remainder of the dry season. The District continues to closely monitor water levels and is urging residents and businesses to conserve water and follow landscape irrigation conservation measures in effect.

For a detailed breakdown of Tuesday's rainfall by basin, click [here](#). Water-savings tips and more information about irrigation limits by area are available at www.savewaterfl.com.

South Florida Water Management District Weather Daily Rainfall Report 24-Hour Rainfall Ending at 7am EST on Jan 26, 2011									
RAINFALL BASIN	LAST 24HRS	24HR FCST	RVSD FCST	PAST WEEK	MONTH TOTAL	MNTH NORM	MNTH %NORM	LAST 30DAYS	30DAY %NORM
UPPER KISSIMMEE	1.36	1.50	1.50	2.80	4.50	1.92	234%	4.50	192%
LOWER KISSIMMEE	1.46	1.75	1.75	1.99	2.77	1.50	185%	2.77	154%
LAKE OKEECHOBEE	1.21	1.25	1.25	1.53	2.24	1.71	131%	2.24	112%
EAA EAST	0.81	0.75	0.75	0.97	1.86	1.77	105%	1.86	90%
EAA WEST	0.98	1.00	1.00	1.16	1.82	1.75	104%	1.82	90%
CONSERV AREA 1&2	0.66	0.40	0.40	0.79	1.39	1.77	78%	1.39	67%
CONSERV AREA 3	0.72	0.60	0.60	0.91	1.51	1.54	98%	1.51	84%
MARTIN-ST LUCIE	1.38	1.00	1.00	1.62	2.42	2.00	121%	2.42	102%
PALM BEACH COUNTY	0.74	0.40	0.40	1.11	2.20	2.65	83%	2.20	70%
BROWARD COUNTY	0.69	0.40	0.40	0.92	1.47	1.89	78%	1.47	66%
DADE COUNTY	0.58	0.60	0.60	0.89	3.01	1.59	189%	3.01	158%
E. CALOOSAHATCHEE	1.28	1.50	1.50	1.58	2.34	1.77	132%	2.34	113%
BIG CYPRESS	0.80	0.75	0.75	0.89	1.47	1.78	82%	1.47	71%
SOUTHWEST COAST	1.37	1.50	1.50	1.51	2.21	1.96	113%	2.21	98%
DISTRICT	1.08	1.08	1.08	1.45	2.36	1.80	131%	2.36	111%

#

About the South Florida Water Management District

The South Florida Water Management District is a regional, governmental agency that oversees the water resources in the southern half of the state – 16 counties from Orlando to the Keys. It is the oldest and largest of the state’s five water management districts. The agency mission is to manage and protect water resources of the region by balancing and improving water quality, flood control, natural systems and water supply. A key initiative is cleanup and restoration of the Everglades.