



SOUTH FLORIDA WATER MANAGEMENT DISTRICT

NEWS RELEASE

June 25, 2012

CONTACT:

Randy Smith

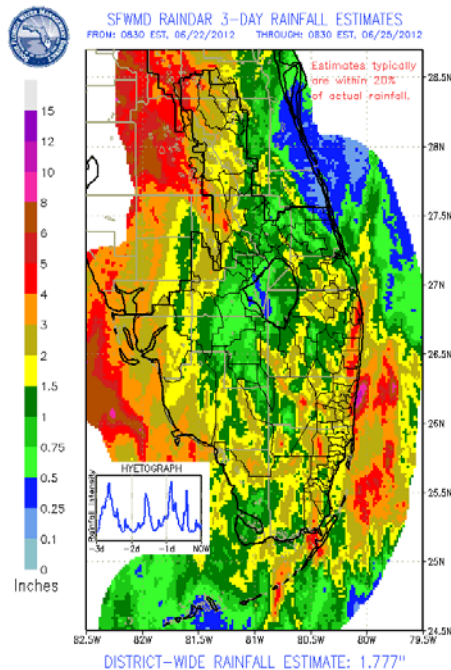
South Florida Water Management District

Office: (561) 682-2800 or Cellular: (561) 389-3386

www.sfwmd.gov/news

follow us on 

Tropical Storm Debby Forecast to Continue Soaking SFWMD *District flood control system is moving water from heavy weekend rainfall*



- 3-Day Storm Stats Snapshot**
Local maximums from around the District (June 22-25)
- **7.0" Avalon/Orange Co.**
 - **6.2" Palm Beach/PBIA**
 - **5.0" Coastal Broward**
 - **4.0" Coastal Caloosahatchee/Lee Co.**
 - **3.3" Coastal Miami-Dade**
 - **2.8" Western Martin/St. Lucie**

*Rainfall estimate map above was generated from radar and rainfall gauges.
(Click on the map for a larger version.)*

West Palm Beach, FL — Rainfall from the slow-moving Tropical Storm Debby is expected to continue across Florida for several more days, with a focus on the west coast and Kissimmee areas of the South Florida Water Management District (SFWMD). The District is operating the extensive flood control system as it was designed to move large amounts of water quickly and efficiently.

“South Florida’s flood control system was in storm-ready mode, and we were prepared to operate at full capacity for this storm,” said Tommy Strowd, SFWMD Director of Operations, Maintenance and Construction. “The system continues to move water as designed to prevent flooding where possible, and we are prepared for additional rain.”

Weekend rainfall associated with the tropical low that became Tropical Storm Debby was most intense in the coastal regions of the District and in the upper Kissimmee area, with local maximums of 7 inches in spots. Interior areas such as Lake Kissimmee, western Collier County, the Everglades Water Conservation Areas and Everglades National Park also received between 2 and 7 inches of rain associated with the storm.

Lake Okeechobee, which stood at 11.88 feet NGVD today, received 1.8 inches of direct rainfall during the past three days. The lake remains 1.42 feet below its historical average for this time of year.

Localized maximums to 10 inches of rain may accumulate through Thursday, mainly in the southwest coast and the Kissimmee Valley. The storm could be the longest duration rainfall event for the District since Tropical Storm Fay in 2008.

Last week, in anticipation of forecasted rainfall, regional canals were drawn down to provide significant capacity to accept a large amount of additional stormwater runoff. The District's coastal structures and pump stations are being operated to move the excess flows and prevent flooding wherever possible.

At present, regional water levels are consistent with normal wet season conditions for June. It remains too early to predict the impact this storm will have on water conditions for the overall wet season.

#

About the South Florida Water Management District

The South Florida Water Management District is a regional, governmental agency that oversees the water resources in the southern half of the state – 16 counties from Orlando to the Keys. It is the oldest and largest of the state's five water management districts. The agency mission is to manage and protect water resources of the region by balancing and improving water quality, flood control, natural systems and water supply. A key initiative is cleanup and restoration of the Everglades.